

L998 4

SURVEY FOR E. D. DURKEE

OF
PART OF N 1/2 - SE 1/4 SEC. 35
T. 37 N., R. 8 E.
ONEIDA COUNTY, WISCONSIN

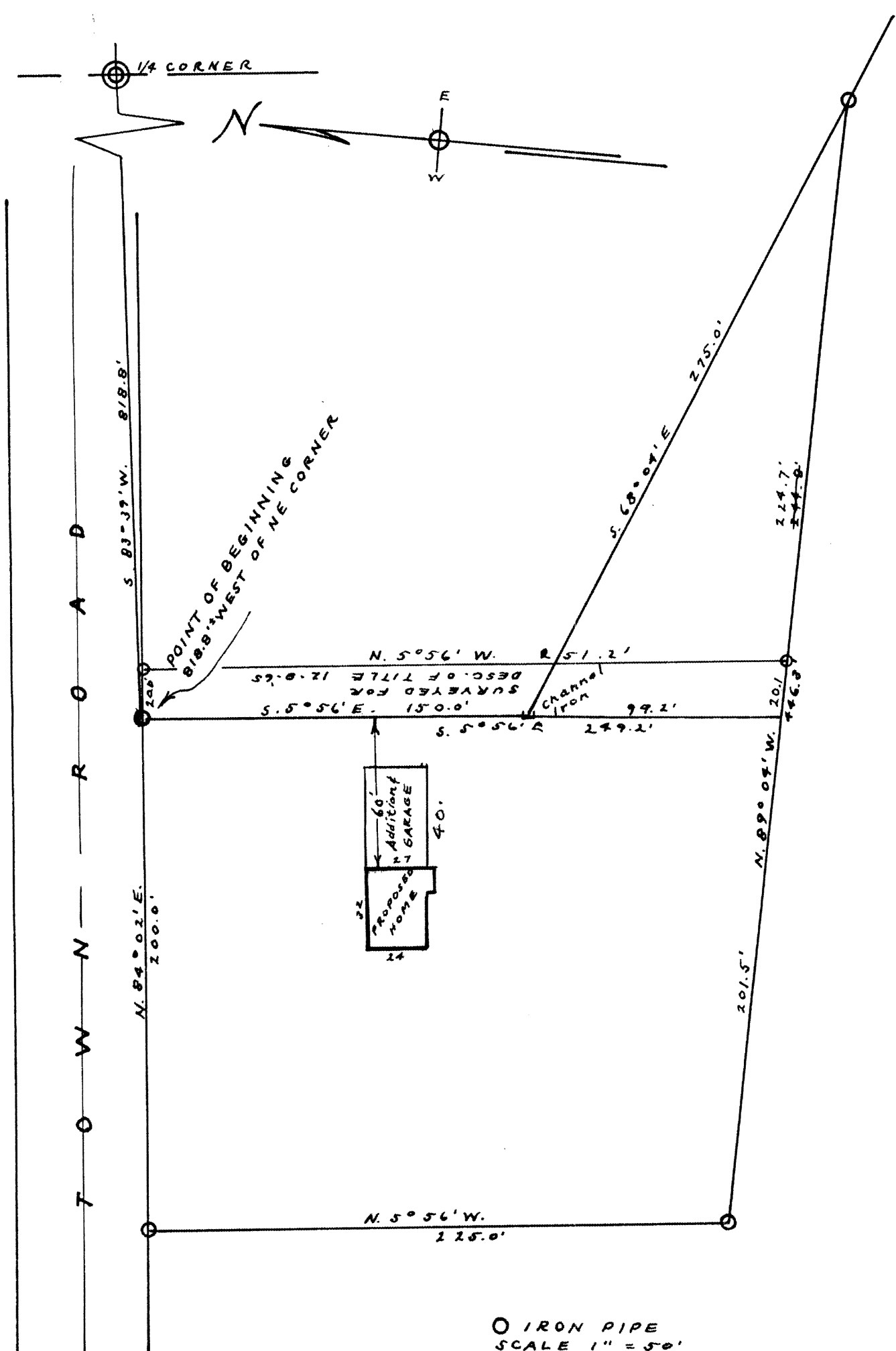
RECEIVED & FILED # L998 4

Oneida County Surveyor's Office

Date JUL 25 1989

By *SR*

OCS Area #.....



O IRON PIPE
SCALE 1" = 50'
DATE 4-6-'60

By *M. Poshie*

L998 4

L998