

R11

STATE PROJECT NUMBER	SHEET NO
9877-01-71	
PLAN & PROFILE	

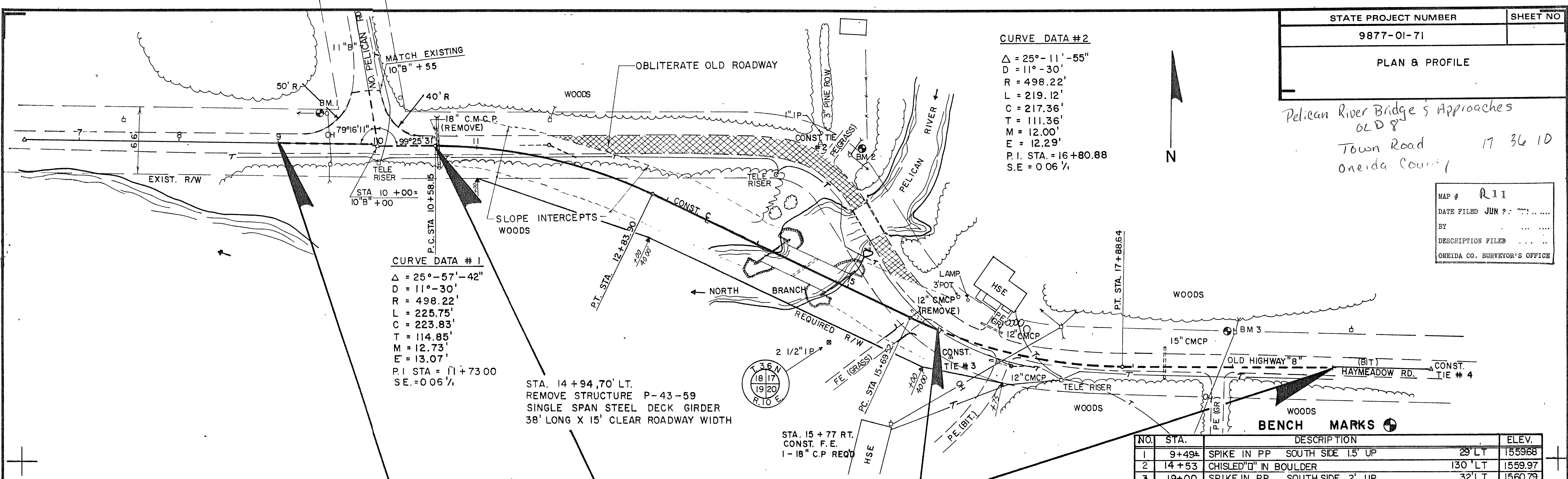
Pelican River Bridge Approaches
 OLD 8"
 Town Road 17 36 10
 Oneida County

MAP #	R11
DATE FILED	JUN 9 1971
BY	
DESCRIPTION FILED	
ONEIDA CO. SURVEYOR'S OFFICE	

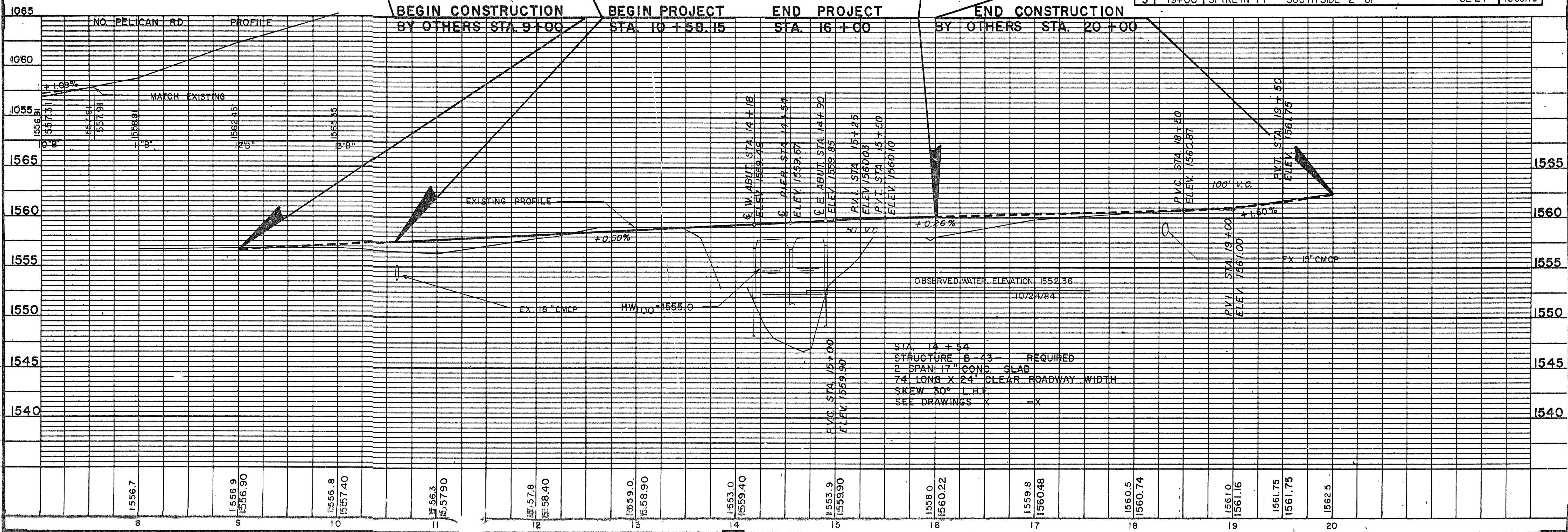
CURVE DATA #2
 $\Delta = 25^\circ - 11' - 55''$
 $D = 11^\circ - 30'$
 $R = 498.22'$
 $L = 219.12'$
 $C = 217.36'$
 $T = 111.36'$
 $M = 12.00'$
 $E = 12.29'$
 $P.I. STA. = 16+80.88$
 $S.E. = 0.06\%$

CURVE DATA #1
 $\Delta = 25^\circ - 57' - 42''$
 $D = 11^\circ - 30'$
 $R = 498.22'$
 $L = 225.75'$
 $C = 223.83'$
 $T = 114.85'$
 $M = 12.73'$
 $E = 13.07'$
 $P.I. STA. = 11+73.00$
 $S.E. = 0.06\%$

STA. 14+94.70 LT.
 REMOVE STRUCTURE P-43-59
 SINGLE SPAN STEEL DECK GIRDER
 38' LONG X 15' CLEAR ROADWAY WIDTH



NO.	STA.	DESCRIPTION	ELEV.
1	9+49.4	SPIKE IN PP SOUTH SIDE 1.5' UP	29' LT 1559.88
2	14+53	CHISEL'D "G" IN BOULDER	130' LT 1559.97
3	19+00	SPIKE IN PP SOUTH SIDE 2' UP	32' LT 1560.79



R11

R11