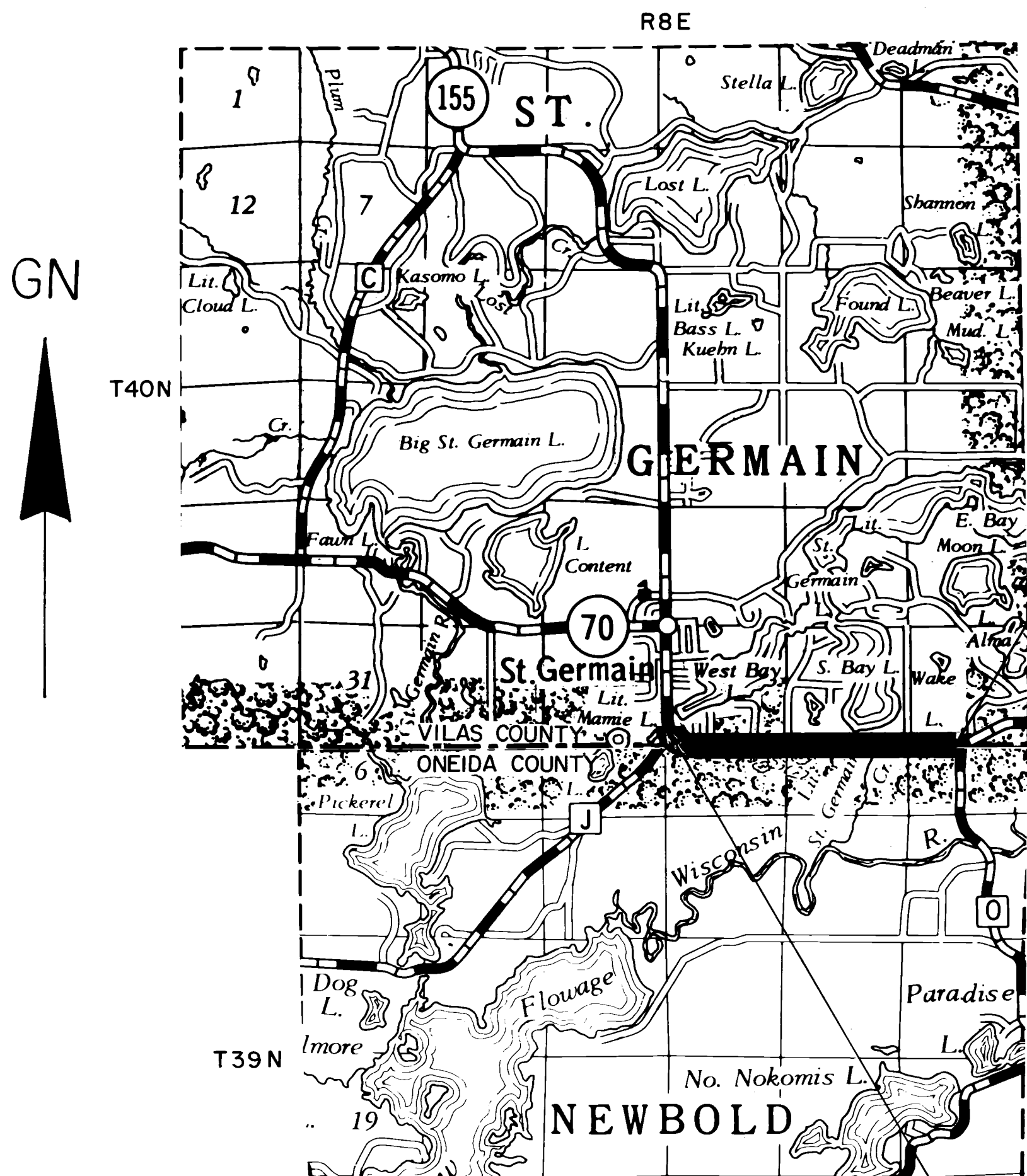


Conventional Signs and Abbreviations

A.C.	ACRE	NW.	NORTHWEST
ET.AL.	AND OTHERS	P.	PAGE
Δ	CENTRAL ANGLE OR DELTA	P.C.	POINT OF CURVATURE
C.	CABIN	P.I.	POINT OF INTERSECTION
C.T.H.	COUNTY TRUNK HIGHWAY	P.L.	PROPERTY LINE
D.	DEGREE OF CURVE	P.O.C.	POINT OF CURVE
E.	EXTERNAL DISTANCE	P.T.	POINT OF TANGENCY
G.	GARAGE	R.	RADIUS
GOV'T.	GOVERNMENT	SE.	SOUTHEAST
H.	HOUSE	SW.	SOUTHWEST
I.	INTERSECTION ANGLE	STA.	STATION
I.P.	IRON PIPE	S.T.H.	STATE TRUNK HIGHWAY
L.	LENGTH OF CURVE	T.	TANGENT LENGTH OF CURVE
L.C.	LAND CONTRACT	V.	VOLUME
NE	NORTHEAST	M.	MEASURED DISTANCE
M.C.	MEANDER CORNER		

R/W PROJECT NUMBER	9081-0-21	SHEET NUMBER	4-0	TOTAL SHEETS	7
FEDERAL PROJECT NUMBER	FO-24(3)	PLAT OF RIGHT OF WAY REQUIRED FOR			
ST. GERMAIN - EAGLE RIVER					
C.T.H."J"-C.T.H."O"					
S.T.H. 70					
ONEIDA COUNTY-VILAS COUNTY					
CONSTRUCTION PROJECT NUMBER					



END RELOCATION ORDER PROJECT 9081-0-21 FO-24 (3)
STA. 233+44.99 N 267,337.95
E 2,143,223.36
8.37' N & 499.64' W OF THE S 1/4 CORNER
SEC. 36, T. 40 N., R. 8 E.

BEGIN RELOCATION ORDER PROJECT 9081-0-21 FO-24(3)
STA. 101+00.29 N 268,211.12
E 2,130,515.97
954.50' N & 8.12' W OF THE SW CORNER
SEC. 34, T. 40 N., R. 8 E.

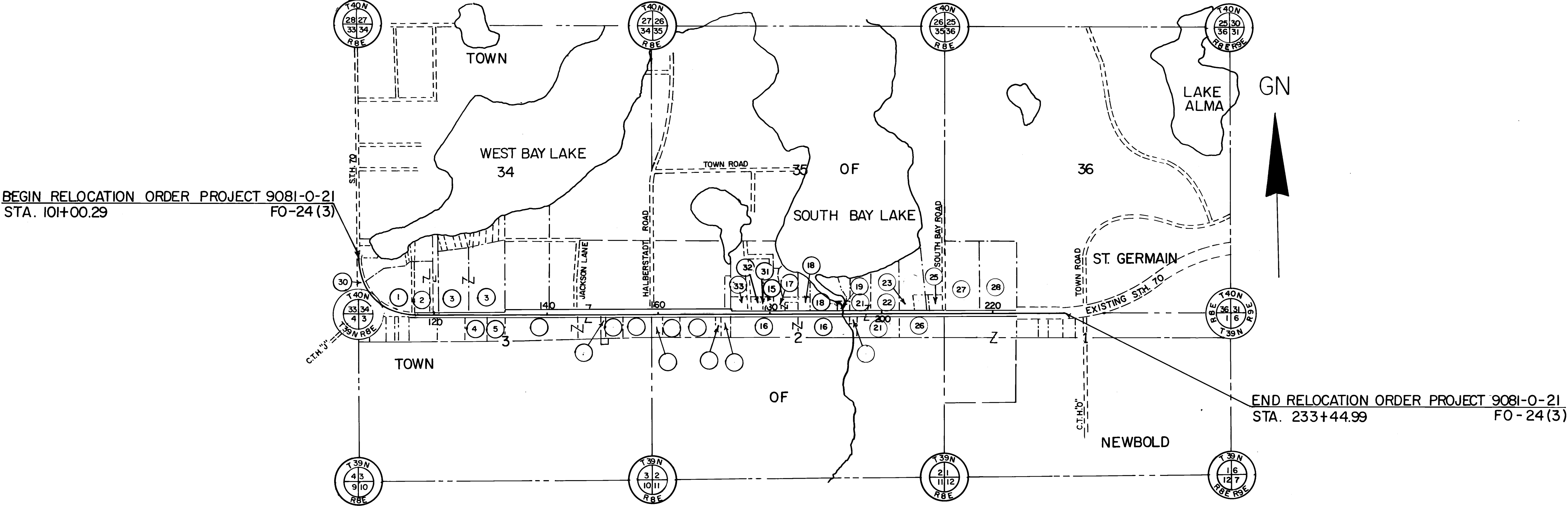
LAYOUT
SCALE 0 1/4 1 MI.
TOTAL NET LENGTH OF CENTERLINE= 2.508 MI.

ALL COORDINATES SHOWN ON THIS PLAT ARE REFERENCED
TO THE WISCONSIN COORDINATE SYSTEM NORTH ZONE.

REVISION DATE	STATE OF WISCONSIN DEPARTMENT OF TRANSPORTATION DIVISION OF HIGHWAYS
7-5-79	Correct:
8-30-79 NC	Date 8/24/78 R.D. Schindelholz District Engineer
	Recommended for Approval:
	Date _____ Chief of Facilities Development
	Approved:
	Date 9/19/78 L.J. Mullen Director, Bureau of Right of Way
	U.S. DEPARTMENT OF TRANSPORTATION FEDERAL HIGHWAY ADMINISTRATION REGION 5 WISCONSIN DIVISION
	Approved:
	Date _____ Division Engineer

BEARING ORIENTATION AND GRID CONVERSION
COORDINATES AND RIGHT OF WAY PLAT BEARINGS ARE ORIENTED TO THE WISCONSIN
COORDINATE SYSTEM WITH 0 DEGREES, 0 MINUTES, 0 SECONDS BEING GRID NORTH.
THE DIFFERENCE BETWEEN PROJECT PLAT BEARINGS REPRESENT PLANE ANGLES IN
DEGREES, MINUTES AND SECONDS TO THE NEAREST SECOND. R/W PLAT DISTANCES
ARE GRID LENGTHS UNLESS OTHERWISE NOTED AND MAY BE CONVERTED TO GROUND
LENGTHS BY MULTIPLYING PLAT DISTANCES BY 1.0001220

REVISION DATE	R/W PROJECT NUMBER 9081-0-21	SHEET NUMBER 4.1
7-5-79 8-30-79	FEDERAL PROJECT NUMBER FO-24 (3)	
	PLAT OF RIGHT OF WAY REQUIRED FOR ST. GERMAIN - EAGLE RIVER C.T.H."J" - C.T.H."O" S.T.H. 70 ONEIDA COUNTY-VILAS COUNTY SCALE 0 1000 2000 Ft. DATE AUGUST 24, 1978	
	CONSTRUCTION PROJECT NUMBER	



PARCEL NO.	TOTAL ACRES	SHEET NO.	OWNER
1	4.20	4.2	GEORGE D. PHILLIPS & LUCILLE F. LEONHARDT L.C.
2	7.66	4.2	JIMMY R. DANIEL ET. AL.
3	40.60	4.2	ENOCH M. MOLGAARD ET. AL.
4			
5			
6			
7			
8			
9			
10			
11			
12			
13			
14			
15	1.50	4.4	JAMES .C. DESMIDT

PARCEL NO.	TOTAL ACRES	SHEET NO.	OWNER
16	21.18	4.4, 4.5	ALONZO CAMP
17	8.03	4.4	ELSIE LINDSTROM
18	5.14	4.5	HERMAN HESSEN
19	0.92	4.5	WISCONSIN VALLEY IMPROVEMENT COMPANY
20			
21	13.26	4.5	JANE POWELL
22	10.04	4.5	J.E. KITZKE
23	9.37	4.5	VAN W. WALTERS
24			
25	10.21	4.5	WILLIAM R. BRUNSWICK
26	7.16	4.5	LILLIAN WINKER
27	20.00	4.6	FLOYD CLIMIE
28	20.00	4.6	JOHN VANDER VEEN
29			
30	1.50	4.2	JOHN ARMENTROUT & JAMES B. PRUITT L.C.
31			
32	1.68	4.4	EAGLE RIVER ROOFING & CONSTRUCTION CO.
33	1.81	4.4	CLARENCE H. J. BONNETTE

GOV'T. LOT CORNER
R.R. SPIKE N268,566.37
E2,130,513.15

WEST BAY LAKE

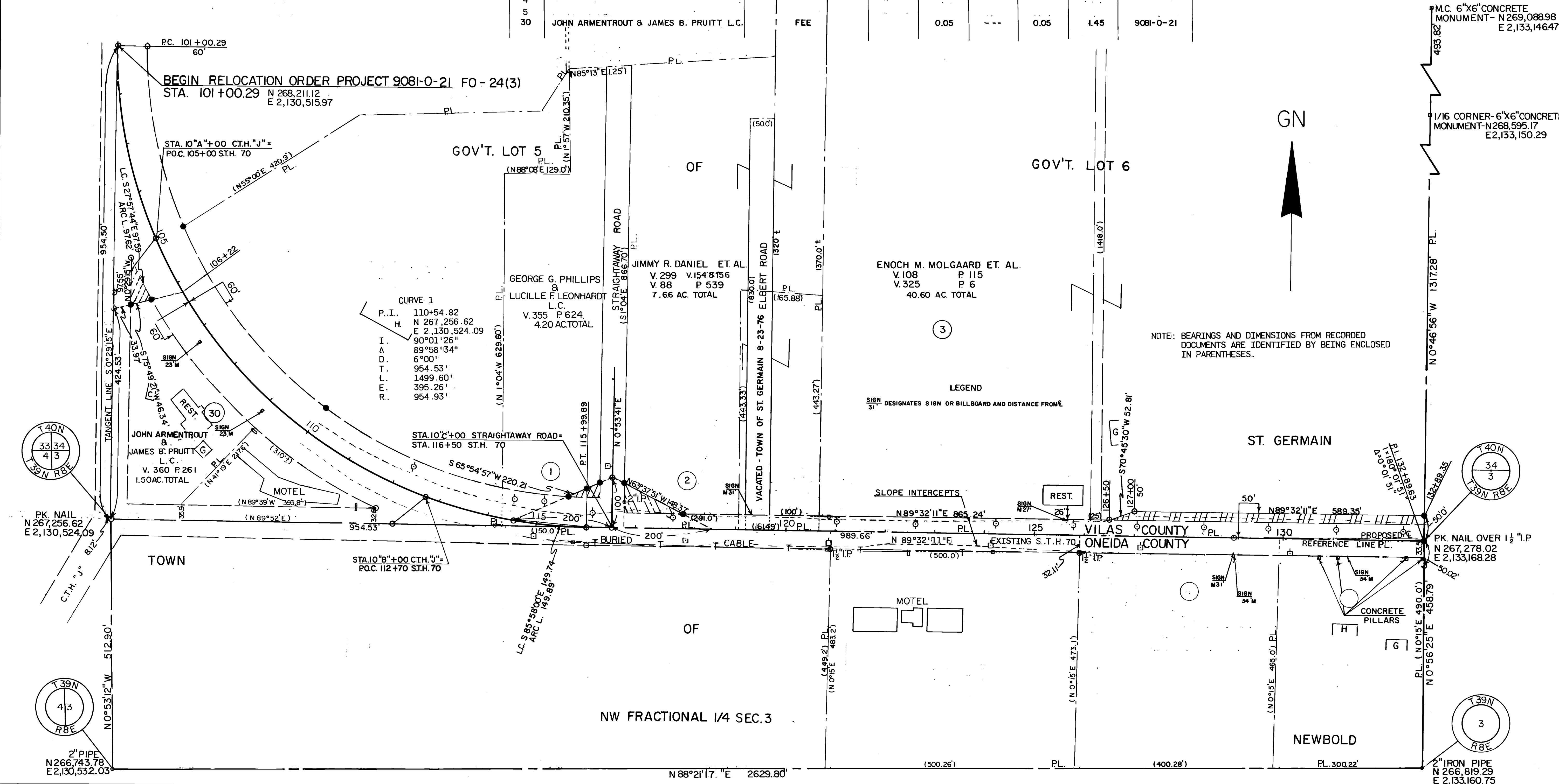
BEARING ORIENTATION AND GRID CONVERSION

COORDINATES AND RIGHT OF WAY PLAT BEARINGS ARE ORIENTED TO THE WISCONSIN COORDINATE SYSTEM WITH 0 DEGREES, 0 MINUTES, 0 SECONDS BEING GRID NORTH. THE DIFFERENCE BETWEEN PROJECT PLAT BEARINGS REPRESENT PLANE ANGLES IN DEGREES, MINUTES AND SECONDS TO THE NEAREST SECOND. R/W PLAT DISTANCES ARE GRID LENGTHS UNLESS OTHERWISE NOTED AND MAY BE CONVERTED TO GROUND LENGTHS BY MULTIPLYING PLAT DISTANCES BY 1.0001220

SCHEDULE OF LANDS AND INTERESTS REQUIRED

PARCEL NO.	OWNER	INTEREST REQUIRED	L.H.E. ACRES	ACRES REQUIRED			TOTAL REMAINING ACRES	OPERATIONS PROJECT NO.
				NEW R/W REQUIRED	EXISTING R/W	TOTAL R/W REQUIRED		
1	GEORGE D. PHILLIPS & LUCILLE F. LEONHARDT L.C.	FEE	---	0.02	---	0.02	4.18	9081-0-21
2	JIMMY R. DANIEL ET AL.	FEE	---	0.08	0.15	0.23	7.43	9081-0-21
3	ENOCH M. MOLGAARD ET AL.	FEE	---	0.26	0.88	1.14	39.46	9081-0-21
4								
5								
30	JOHN ARMENTROUT & JAMES B. PRUITT L.C.	FEE		0.05	---	0.05	1.45	9081-0-21

REVISION DATE	R/W PROJECT NUMBER	SHEET NUMBER
7-5-79 8-30-79	9081-0-21	4.2
FEDERAL PROJECT NUMBER		
FO-24(3)		
PLAT OF RIGHT OF WAY REQUIRED FOR ST. GERMAIN - EAGLE RIVER C.T.H. "J" - C.T.H. "O" S.T.H. 70 ONEIDA COUNTY-VILAS COUNTY		
SCALE 0 100 200 FT.		DATE AUGUST 24, 1978
CONSTRUCTION PROJECT NUMBER		




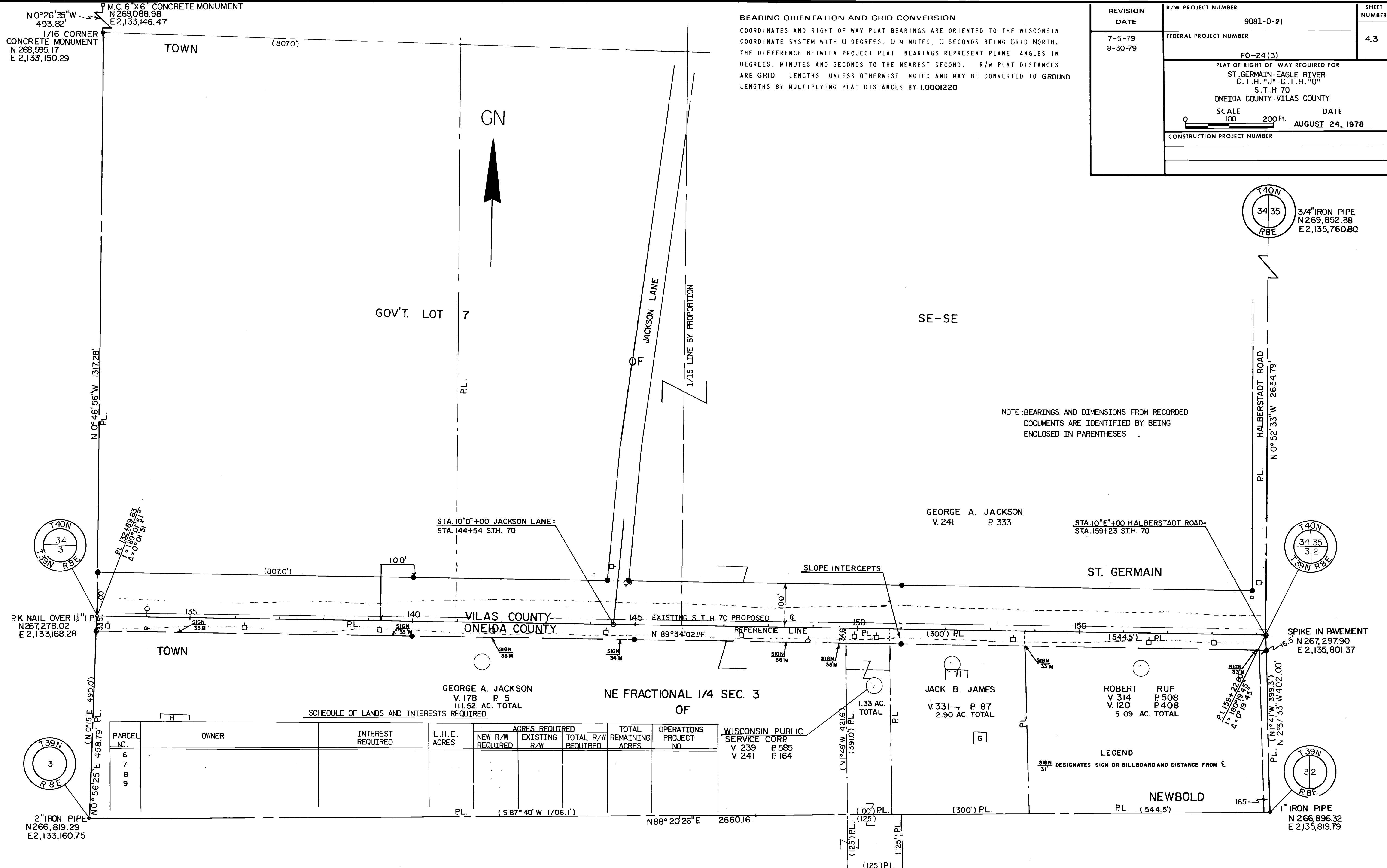
N 0°26'35"W
493.82'
1/16 CORNER
CONCRETE MONUMENT
N 268,595.17
E 2,133,150.29

M.C. 6"X6" CONCRETE MONUMENT
N 269,088.98
E 2,133,146.47

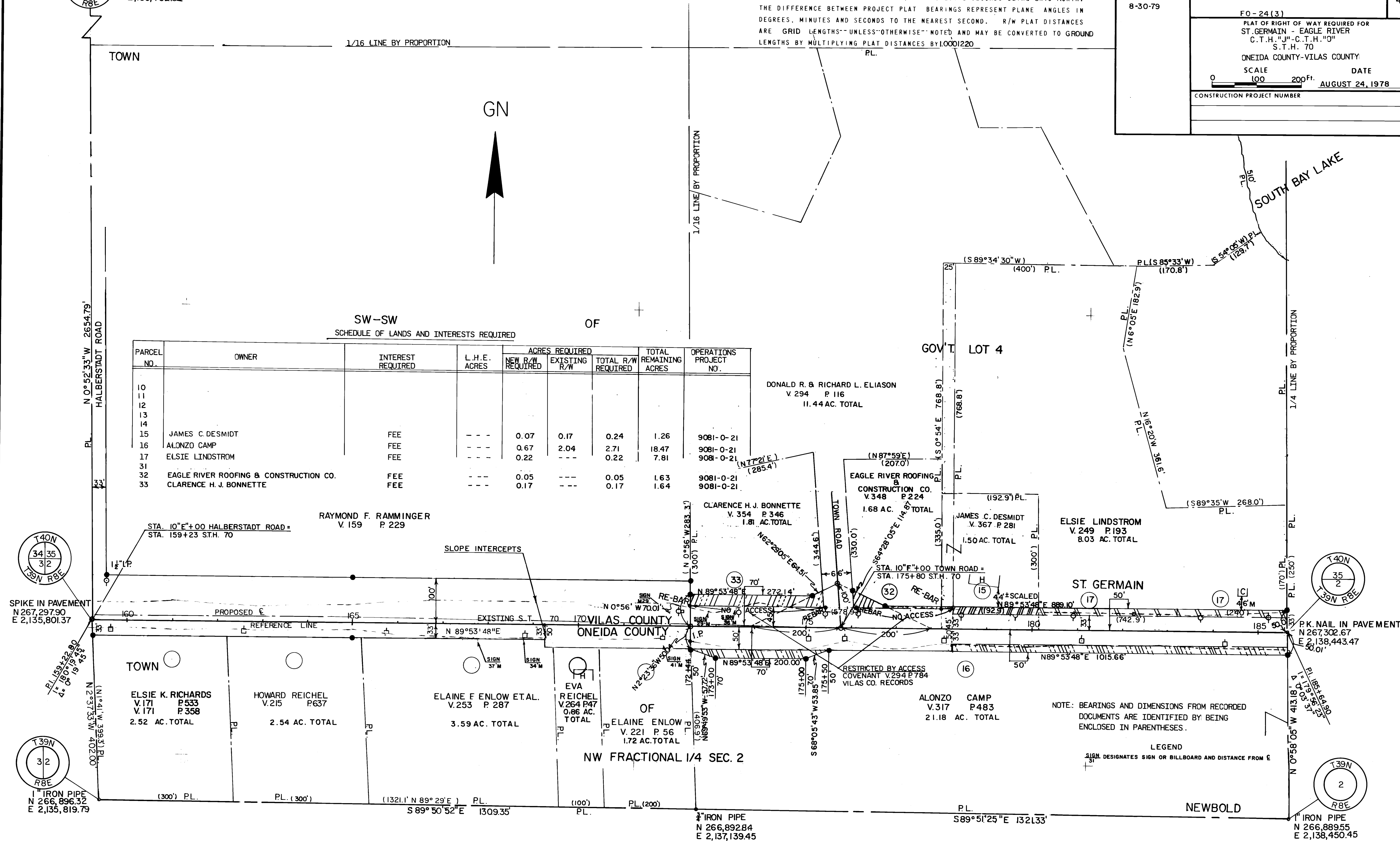
TOWN

BEARING ORIENTATION AND GRID CONVERSION
COORDINATES AND RIGHT OF WAY PLAT BEARINGS ARE ORIENTED TO THE WISCONSIN
COORDINATE SYSTEM WITH 0 DEGREES, 0 MINUTES, 0 SECONDS BEING GRID NORTH.
THE DIFFERENCE BETWEEN PROJECT PLAT BEARINGS REPRESENT PLANE ANGLES IN
DEGREES, MINUTES AND SECONDS TO THE NEAREST SECOND. R/W PLAT DISTANCES
ARE GRID LENGTHS UNLESS OTHERWISE NOTED AND MAY BE CONVERTED TO GROUND
LENGTHS BY MULTIPLYING PLAT DISTANCES BY 1.0001220

REVISION DATE	R/W PROJECT NUMBER 9081-0-21	SHEET NUMBER
	FEDERAL PROJECT NUMBER FO-24 (3)	4.3
7-5-79 8-30-79	PLAT OF RIGHT OF WAY REQUIRED FOR ST. GERMAIN-EAGLE RIVER C.T.H. "J"-C.T.H. "O" S.T.H 70 ONEIDA COUNTY-VILAS COUNTY <div style="display: flex; align-items: center; justify-content: center;"> <div style="text-align: center;"> SCALE 100  </div> <div style="margin-left: 20px;"> DATE <u>AUGUST 24, 1978</u> </div> </div>	
	CONSTRUCTION PROJECT NUMBER	



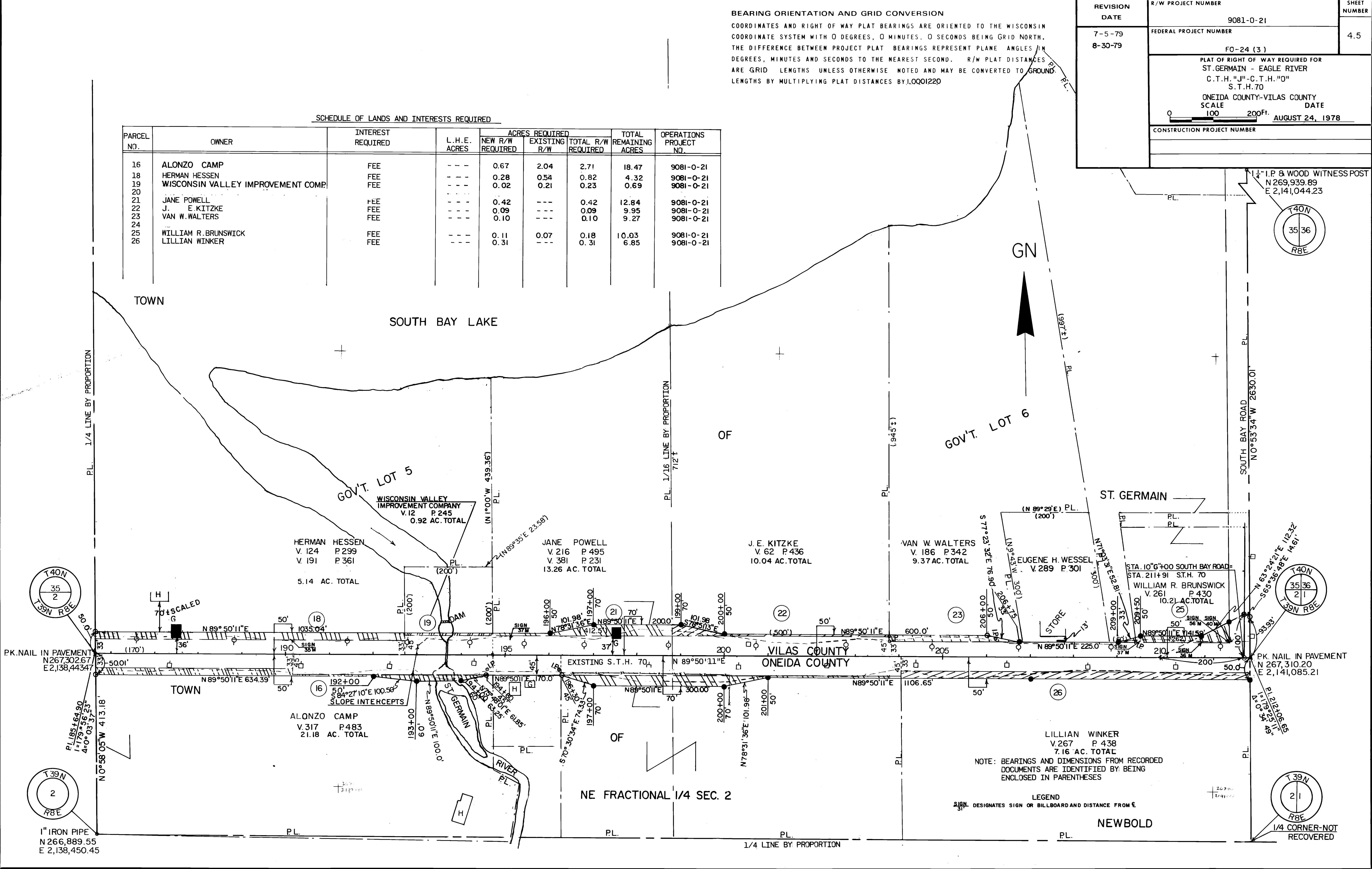
REVISION DATE	R/W PROJECT NUMBER 9081-0-21	SHEET NUMBER
7-5-79 8-30-79	FEDERAL PROJECT NUMBER FO-24(3)	4.4
PLAT OF RIGHT OF WAY REQUIRED FOR ST. GERMAIN - EAGLE RIVER C.T.H. "J" - C.T.H. "O" S.T.H. 70 ONEIDA COUNTY-VILAS COUNTY		
SCALE 0 100 200 Ft. DATE AUGUST 24, 1978		
CONSTRUCTION PROJECT NUMBER		

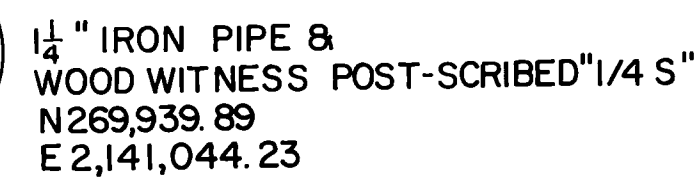


BEARING ORIENTATION AND GRID CONVERSION
COORDINATES AND RIGHT OF WAY PLAT BEARINGS ARE ORIENTED TO THE WISCONSIN
COORDINATE SYSTEM WITH 0 DEGREES, 0 MINUTES, 0 SECONDS BEING GRID NORTH.
THE DIFFERENCE BETWEEN PROJECT PLAT BEARINGS REPRESENT PLANE ANGLES IN
DEGREES, MINUTES AND SECONDS TO THE NEAREST SECOND. R/W PLAT DISTANCES
ARE GRID LENGTHS UNLESS OTHERWISE NOTED AND MAY BE CONVERTED TO GROUND
LENGTHS BY MULTIPLYING PLAT DISTANCES BY 1.0001220

REVISION DATE	R/W PROJECT NUMBER	SHEET NUMBER
7-5-79	9081-0-21	4.5
8-30-79	F0-24 (3)	
PLAT OF RIGHT OF WAY REQUIRED FOR ST. GERMAIN - EAGLE RIVER C.T.H. "J"-C.T.H. "O" S.T.H. 70		
ONEIDA COUNTY-VILAS COUNTY SCALE 100 200 Ft. DATE AUGUST 24, 1978		
CONSTRUCTION PROJECT NUMBER		

SCHEDULE OF LANDS AND INTERESTS REQUIRED								
PARCEL NO.	OWNER	INTEREST REQUIRED	L.H.E. ACRES	ACRES REQUIRED			TOTAL REMAINING ACRES	OPERATIONS PROJECT NO.
				NEW R/W REQUIRED	EXISTING R/W	TOTAL R/W REQUIRED		
16	ALONZO CAMP	FEE	---	0.67	2.04	2.71	18.47	9081-0-21
18	HERMAN HESSEN	FEE	---	0.28	0.54	0.82	4.32	9081-0-21
19	WISCONSIN VALLEY IMPROVEMENT COMP.	FEE	---	0.02	0.21	0.23	0.69	9081-0-21
20								
21	JANE POWELL	FEE	---	0.42	---	0.42	12.84	9081-0-21
22	J. E. KITZKE	FEE	---	0.09	---	0.09	9.95	9081-0-21
23	VAN W. WALTERS	FEE	---	0.10	---	0.10	9.27	9081-0-21
24								
25	WILLIAM R. BRUNSWICK	FEE	---	0.11	0.07	0.18	10.03	9081-0-21
26	LILLIAN WINKER	FEE	---	0.31	---	0.31	6.85	9081-0-21





COORDINATES AND RIGHT OF WAY PLAT BEARINGS ARE ORIENTED TO THE WISCONSIN
COORDINATE SYSTEM WITH 0 DEGREES, 0 MINUTES, 0 SECONDS BEING GRID NORTH.
THE DIFFERENCE BETWEEN PROJECT PLAT BEARINGS REPRESENT PLANE ANGLES IN
DEGREES, MINUTES AND SECONDS TO THE NEAREST SECOND. R/W PLAT DISTANCES
ARE GRID LENGTHS UNLESS OTHERWISE NOTED AND MAY BE CONVERTED TO GROUND
LENGTHS BY MULTIPLYING PLAT DISTANCES BY 1.0001220

PARCEL NO.	OWNER	INTEREST REQUIRES	L.H.E. ACRES	ACRES REQUIRED			TOTAL REMAINING ACRES	OPERATIONS PROJECT NO.
				NEW R/W	EXISTING R/W	TOTAL R/W REQUIRED		
27	FLOYD CLIMIE	FEE	---	0.31	---	0.31	19.69	9081-0-21
28	JOHN VANDER VEEN	FEE	---	0.26	---	0.26	19.74	9081-0-21
29								



SE-SW

P. I.	242+75.35
N	267,350.02
E	2,144,153.65
I.	144°01'00"
Δ	35°59'00"
D.	2°00'
T.	930.37'
L.	1799.18'
E.	147.29'
R.	2864.79'

NOTE: BEARINGS AND DIMENSIONS FROM RECORDED DOCUMENTS ARE IDENTIFIED BY BEING ENCLOSED IN PARENTHESES.

FLOYD CLIMIE
V.140 P.453
20.00 AC. TOTAL

JOHN VANDER VEEN
V. 231 P 526
20.00 AC. TOTAL

END RELOCATION ORDER PROJECT 9081-O-21
STA. 233+44.98 N 267,337.95 FO -24 (3)
E 2,143,223.36

ST. GERMAIN

P.K.NAIL IN PAVEMENT
N267,310.20
E2,141,085.21

A TOWN

STATE OF WISCONSIN
DEPT. OF NATURAL RESOURCES
V. 421 P. 491
65.60 AC. TOTAL

NW FRACTIONAL 1/4 SEC. 1

LEGEND

SIGN DESIGNATES SIGN OR BILLBOARD AND DISTANCE FROM S

NEWBOLD

5" RE-BAR IN PAVEMENT
N 267,329.58
E 2,143.723.00

1 1/2" RE-BAR
N 266,891.01
E 2,143.713.26

1/4 LINE USING 2" RE-BAR & PROPORTION

2" RE-BAR
N 266,884.52
E 2,142.397.65

N 89°43'03"E 1315.62'