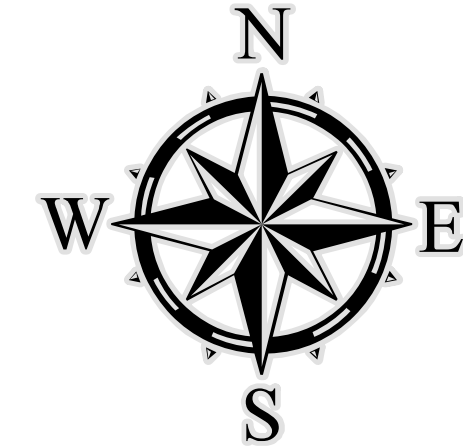
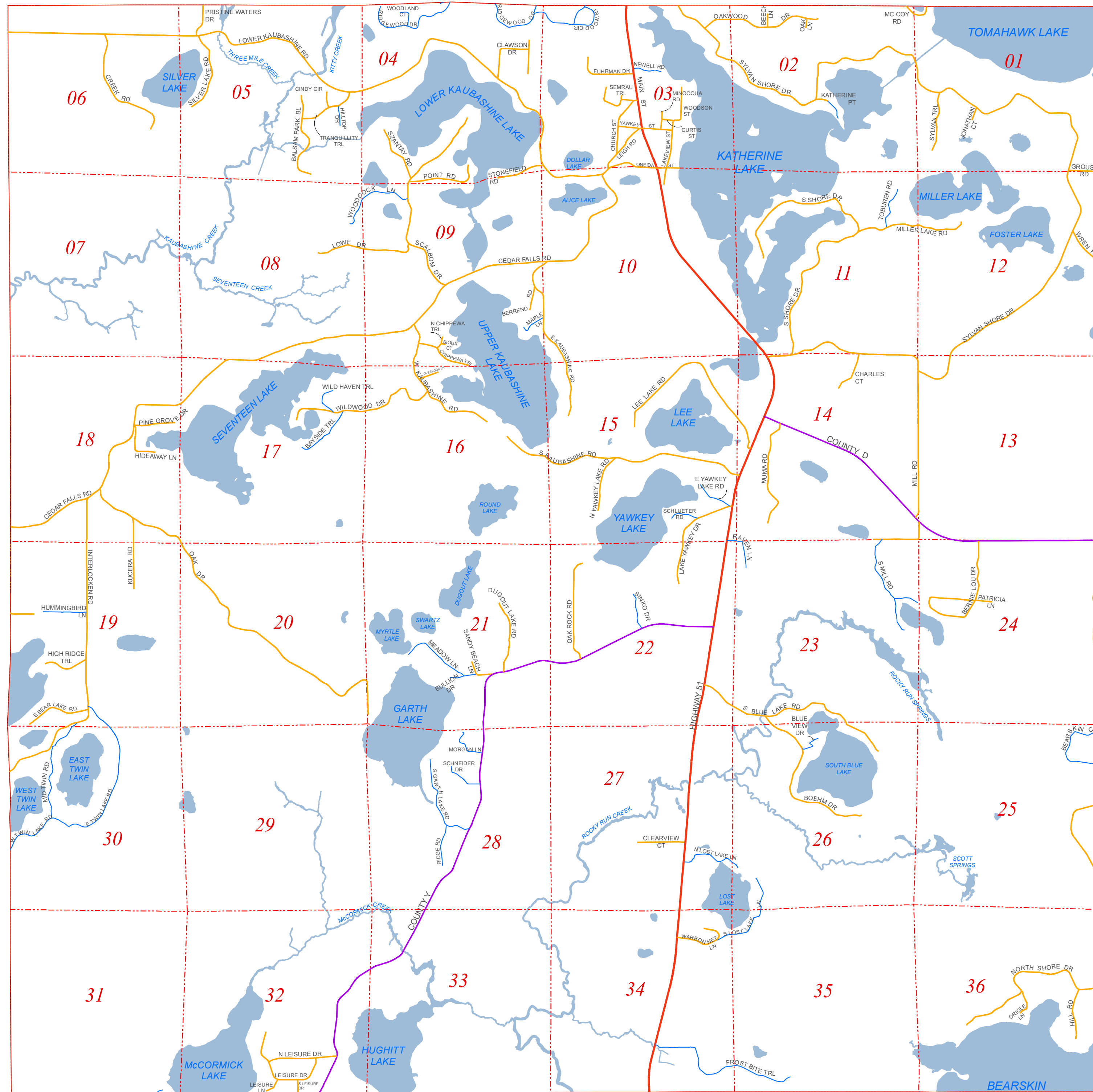
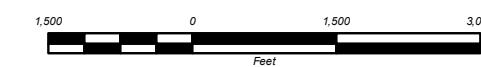


Town of Hazelhurst Road Map



Scale
1" = 2000'
1:24,000



Legend	
Roads	
RoadSubType	
	County
	County Forest
	Federal
	Municipal
	Private
	State
	State Forest
	Town
PLSS Boundary	
LineType	
	Section
	Township
RoadClass	
	In Use
	WaterBody

DATA SOURCES AND DISCLAIMERS:

Information depicted on this map was interpreted from aerial photography and various other public land records. An attempt was made to accurately represent the information shown hereon, however, recent changes in the physical and cultural landscape may not be represented. This map is intended for planning and general use only, please refer to original source documents for detailed information. Please contact the Oneida County Land Information Office at (715) 369-6179 if you discover any discrepancies on this map.