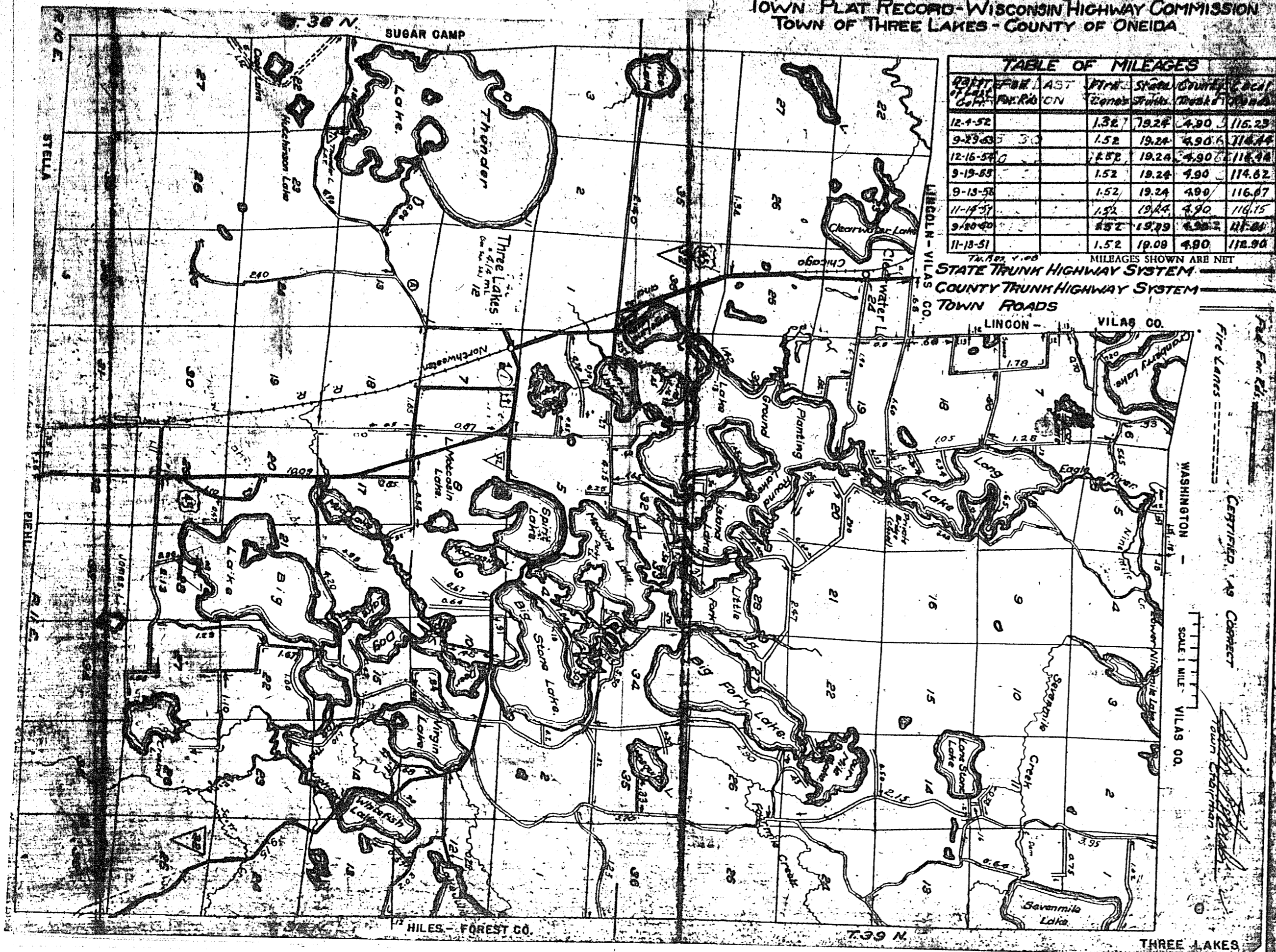


Three Lakes 18-20
TOWN PLAT RECORD - WISCONSIN HIGHWAY COMMISSION
TOWN OF THREE LAKES - COUNTY OF ONEIDA

TABLE OF MILEAGES

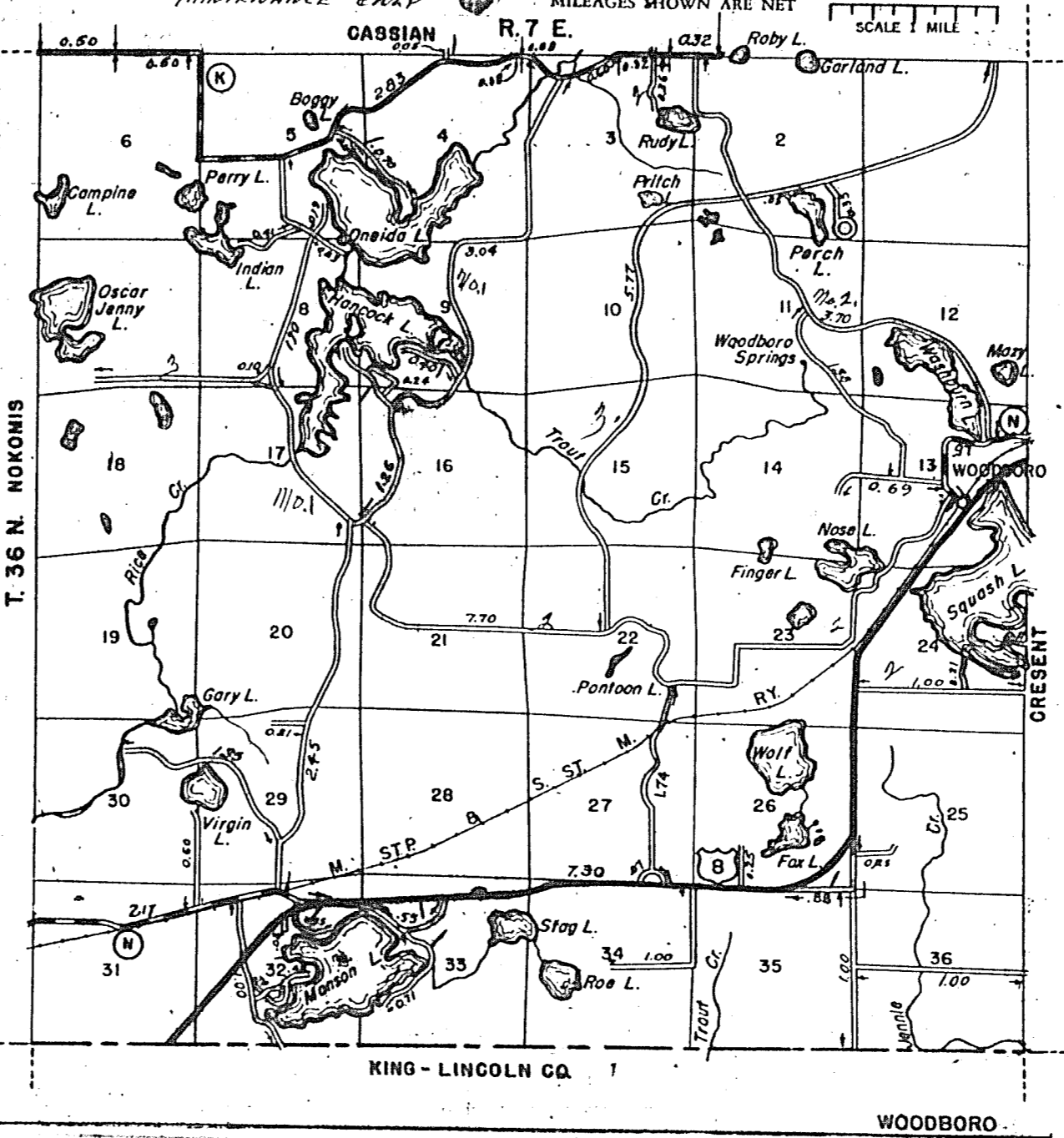
Date of Last Cor.	Fed. For. Dev. Rds.	State Park Rds.	State Fire Lane	State Trunks	County Trunks	Local Roads	Sym-bols
12-4-52		1.52	7.22	4.90	116.23		
9-29-53		1.52	19.24	4.90	116.23		Sch. 1
12-16-54		1.52	18.24	4.90	116.23		Cem. 1
9-19-55		1.52	18.24	4.90	116.62		Tower 1
9-13-56		1.52	19.24	4.90	116.67		Gate 1
11-17-57		1.52	19.24	4.90	116.15		
9-20-58		1.52	19.24	4.90	116.60		
11-13-59		1.52	19.08	4.90	116.94		



STATE HIGHWAY COMM. OF WISCONSIN
TOWN PLAT RECORD

Town WOODBORO County ONEIDA

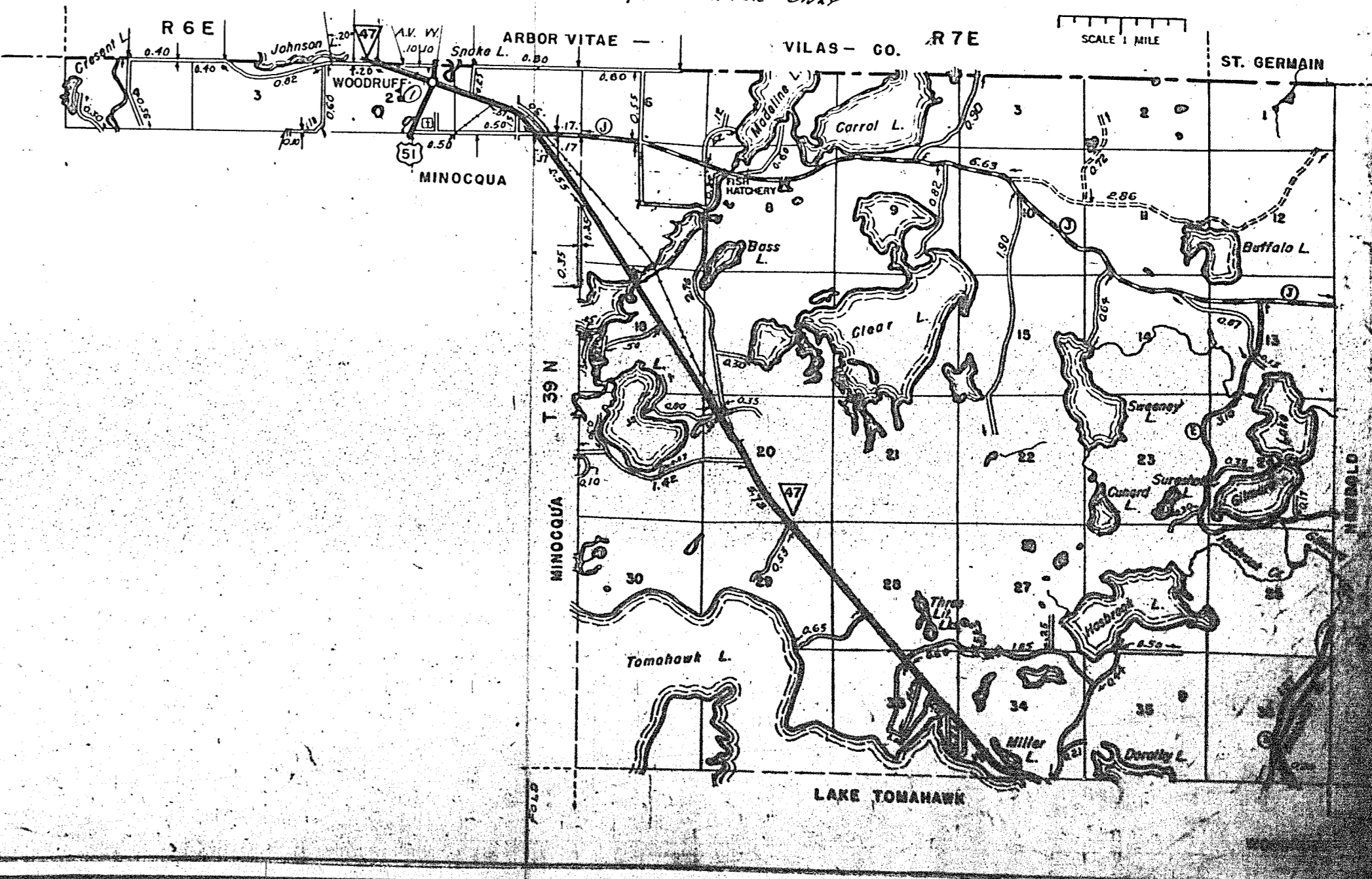
Date of Last Cor.	Fed. For. Dev. Rds.	State Park Rds.	State Fire Lane	State Trunks	County Trunks	Local Roads	Sym-bols
12-9-54				7.30	7.47	44.85	Sch. 1
9-26-55				7.30	7.47	44.56	Cem. 1
10-2-56				7.30	7.47	44.35	Tower 1
9-28-57				7.30	7.47	44.55	Gate 1
11-13-58				7.30	7.47	43.08	
9-24-59				7.30	7.47	43.65	



STATE HIGHWAY COMMISSION OF WISCONSIN
TOWN PLAT RECORD

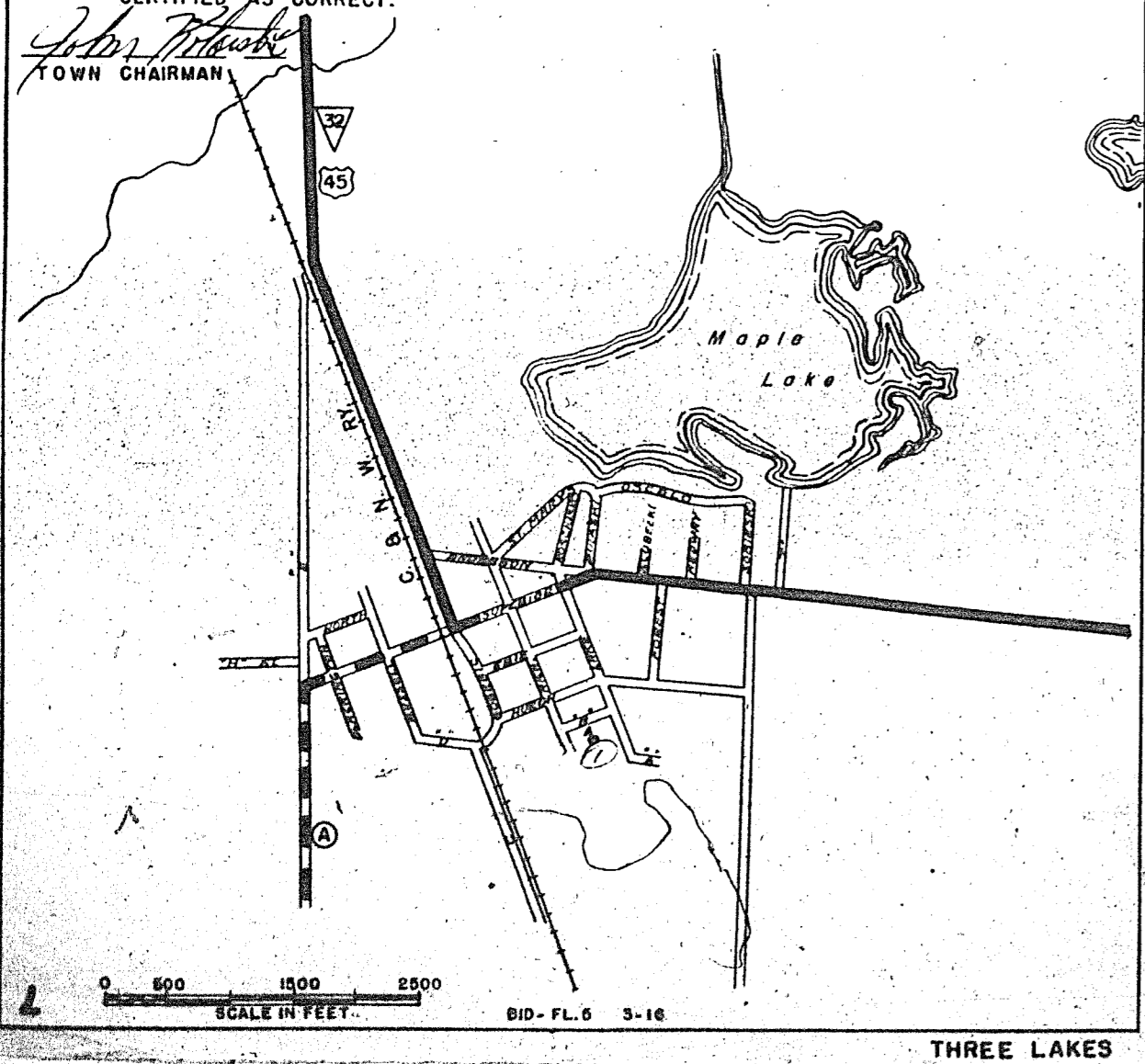
Town of WOODRUFF County of ONEIDA

Date of Last Cor.	Fed. For. Dev. Rds.	State Park Rds.	State Fire Lane	State Trunks	County Trunks	Local Roads	Sym-bols
11-13-51				3.78	7.30	29.67	
11-17-52				3.78	7.72	30.51	State Trunk Highway Sys
9-28-53				3.78	7.72	30.12	County Trunk Highway Sys
12-16-54				3.78	7.72	30.12	Local Roads
12-9-55				3.78	7.72	30.12	Fed. Forest Dev. Roads
12-20-56				3.78	7.72	33.98	State Park Roads
9-28-57				3.78	7.72	33.63	State Fire Lanes
10-25-59				3.78	7.30	29.25	Gate
10-17-50				3.78	7.30	29.17	



THREE LAKES
TOWN: THREE LAKES
COUNTY: ONEIDA
UNINCORPORATED

DATE OF LAST COR.	STATE TRUNKS	CONN. STREETS	COUNTY TRUNKS	LOCAL STREETS
9-29-53				4.02
12-16-54				4.02
9-19-55				4.02
9-13-56				4.14
11-17-57				4.14
12-4-52				3.90



Town of Three Lakes County Oneida

Name of Street	Gross Length	Inter. Omit. d	Feet Deduct	Net Length	State Trunk	Conn. Street	County Trunk	Local Street
Anderson	1308	2	130	1178				1278
North	565	2	130	435				426
Erie	300	2	130	170				780
Huron	1320	2	130	1190				1050
"B"	400	2	130	270				360
"D"	540	2	130	410				546
"A"	525	1	130	395				246
F	560	-	-	560				560
"H"	636	-	-	636				636
"C"	3228	1	60	3168				3168
Blackington Avenue	805	2	120	685				685
Russell Ave.	1145	2	120	1025				1025
"G"	1544	1	60	1484				1584
Gogable	905	2	120	785				788
Michigan	1720	4	220	1500				1560
St. Mary	800	1	60	740				800
Canale	1282	2	120	1162				1182
Lake	1504	2	120	1384				1464
Pulaski Ave.	750	1	60	690				700
Forest Ave.	800	2	120	680				780
Hadway Ave.	280	1	60	220				200
Slubekist	210	1	60	150				160
Sobieski Ave.	641	-	-	641				641
Kosciusko	400	-	-	400				400

Total Feet 21,857
Total Miles 4.14
Certified as Correct:
John M. [Signature]
Town Clerk