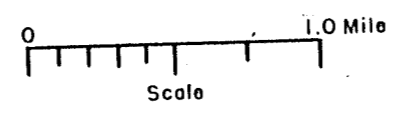


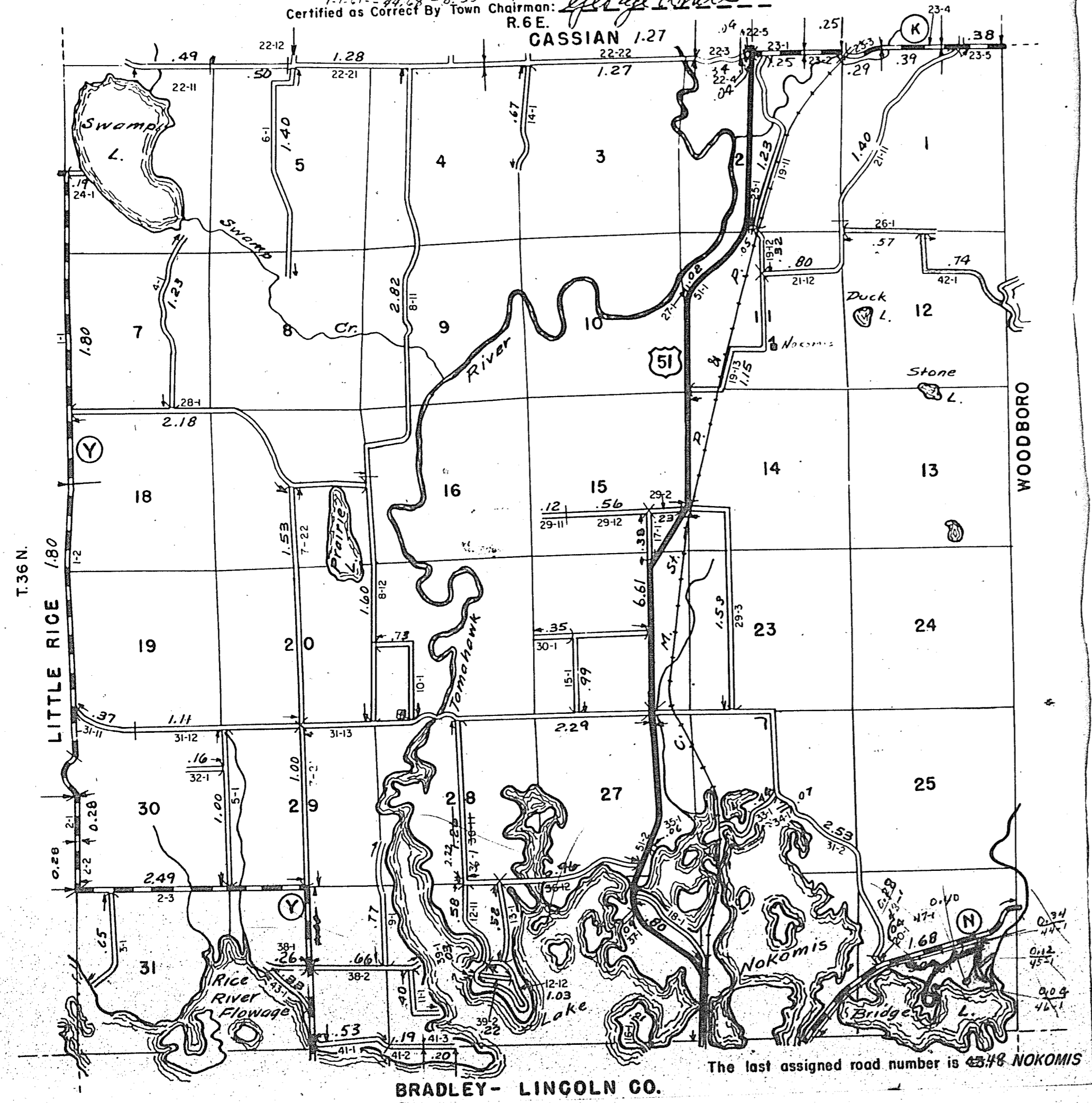
STATE HIGHWAY COMM. OF WISCONSIN
TOWN PLAT RECORD

Town - NOKOMIS County, ONEIDA (43-011)

Date of Last Corr.	State Trunks	County Trunks	Local Roads	Symbols
1-1-58	6.61	7.25	44.15	Sch. 1
1-1-59	6.61	7.18	43.51	Cem. 1
1-1-60	6.61	7.18	43.50	Tower 1
1-1-61	6.61	7.18	44.68	



43.50-0.30 = 43.20
 1-1-1-44.68-0.33 = 44.35
 Certified as Correct By Town Chairman: *George White*



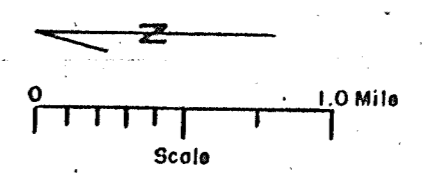
The last assigned road number is 4348 NOKOMIS

BRADLEY- LINCOLN CO.

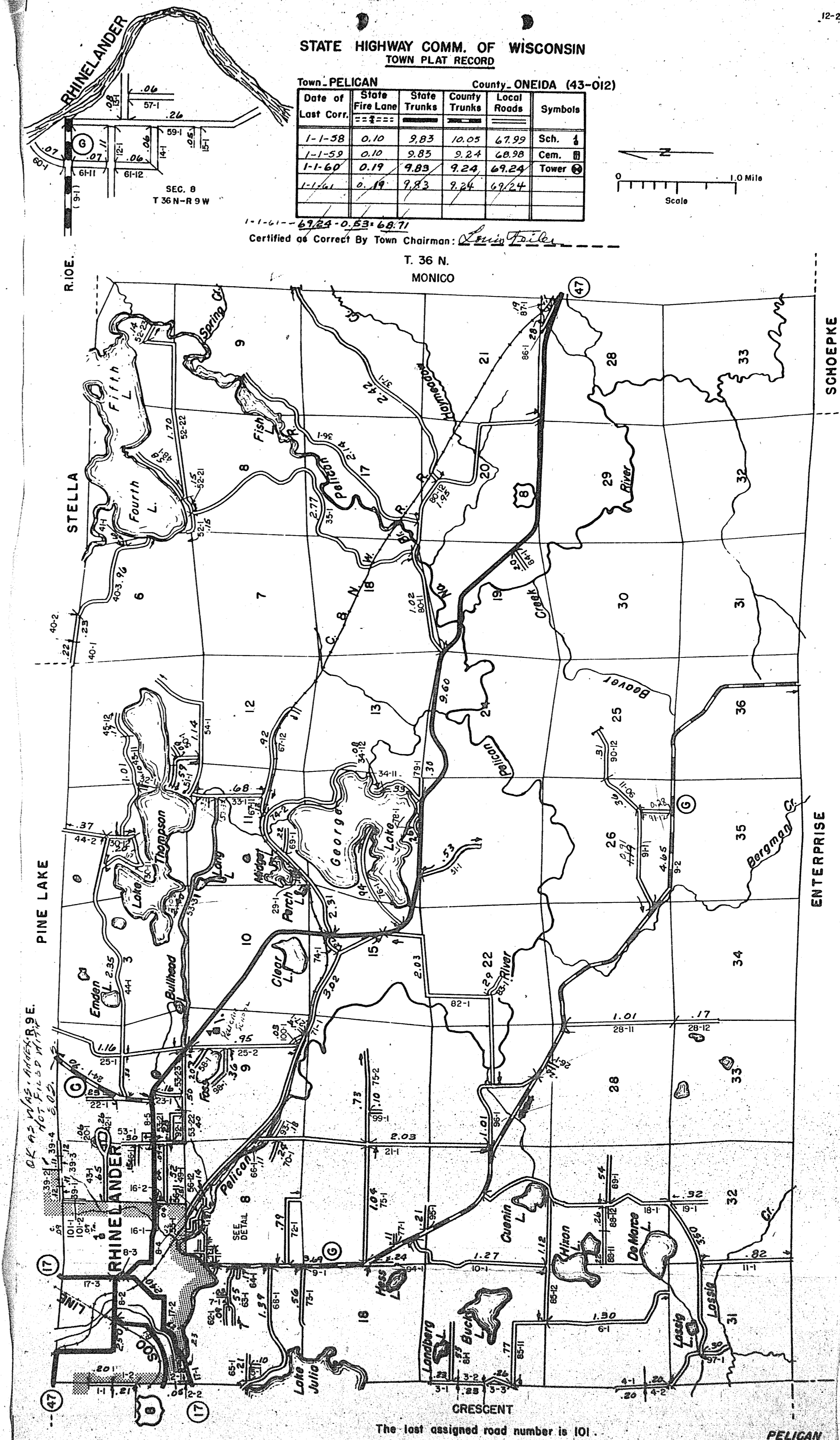
STATE HIGHWAY COMM. OF WISCONSIN
TOWN PLAT RECORD

Town - PELICAN County, ONEIDA (43-012)

Date of Last Corr.	State Fire Lane	State Trunks	County Trunks	Local Roads	Symbols
1-1-58	0.10	9.83	10.05	67.99	Sch. 1
1-1-59	0.10	9.83	9.24	68.98	Cem. 1
1-1-60	0.19	9.83	9.24	69.24	Tower 1
1-1-61	0.19	9.83	9.24	69.24	



1-1-61-69.24-0.53 = 68.71
 Certified as Correct By Town Chairman: *Robert Filler*



The last assigned road number is 101.

PELICAN