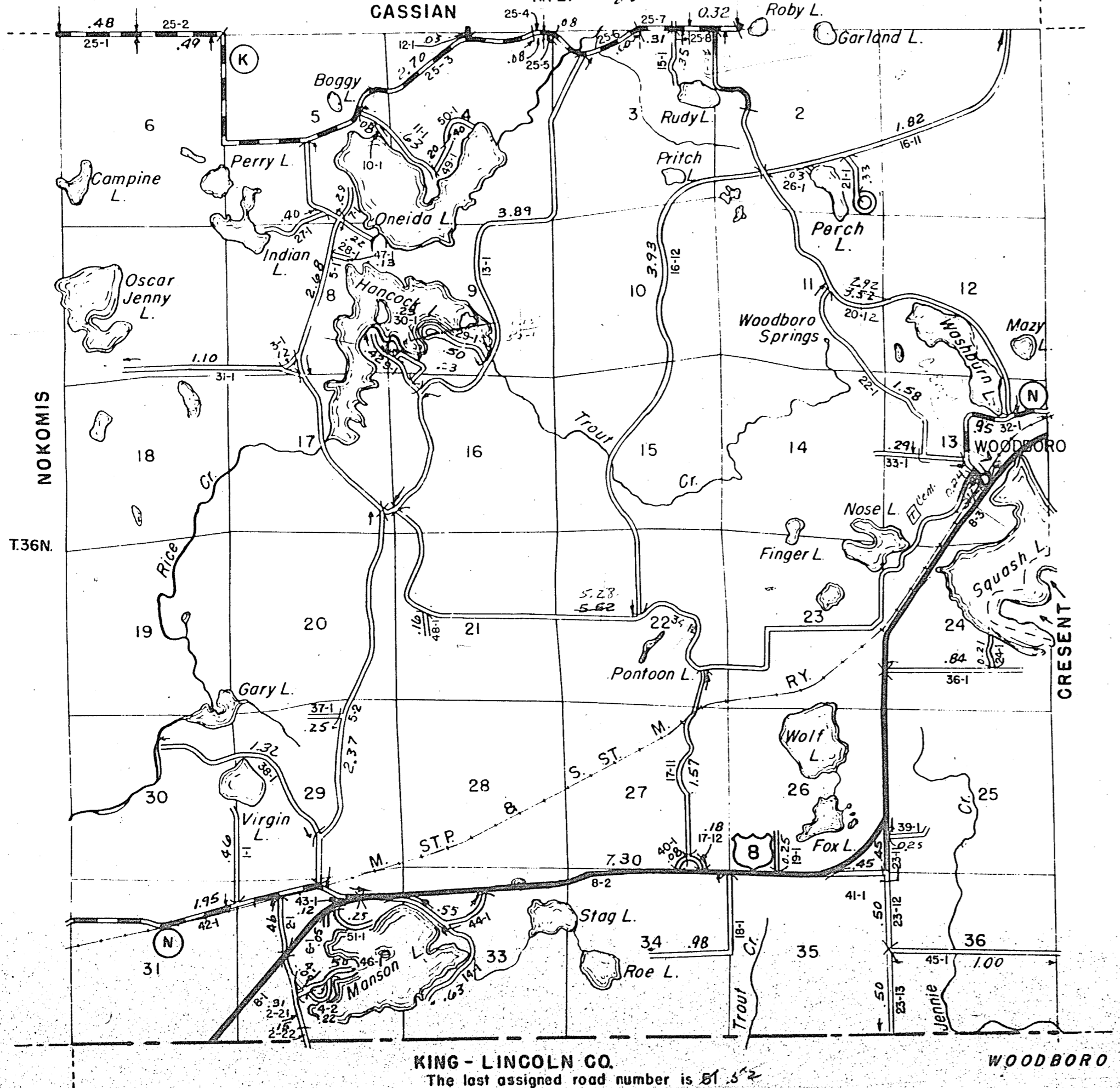


STATE HIGHWAY COMM. OF WISCONSIN
TOWN PLAT RECORD

Town - WOODBORO County, ONEIDA (43-019)

Date of Last Corr.	State Trunks	County Trunks	Local Roads	Symbols
1-1-58	7.30	7.47	44.35	Sch. 1
1-1-59	7.30	7.21	42.73	Cem. 1
1-1-60	7.30	7.20	43.72	Tower 1
1-1-61	7.30	7.26	43.87	

43.72-0.31=43.41
1-1-61-23.87-0.32=23.55
Certified as Correct By Town Chairman: *Clifford Brown*
R.7E.



KING - LINCOLN CO.
The last assigned road number is 81.52

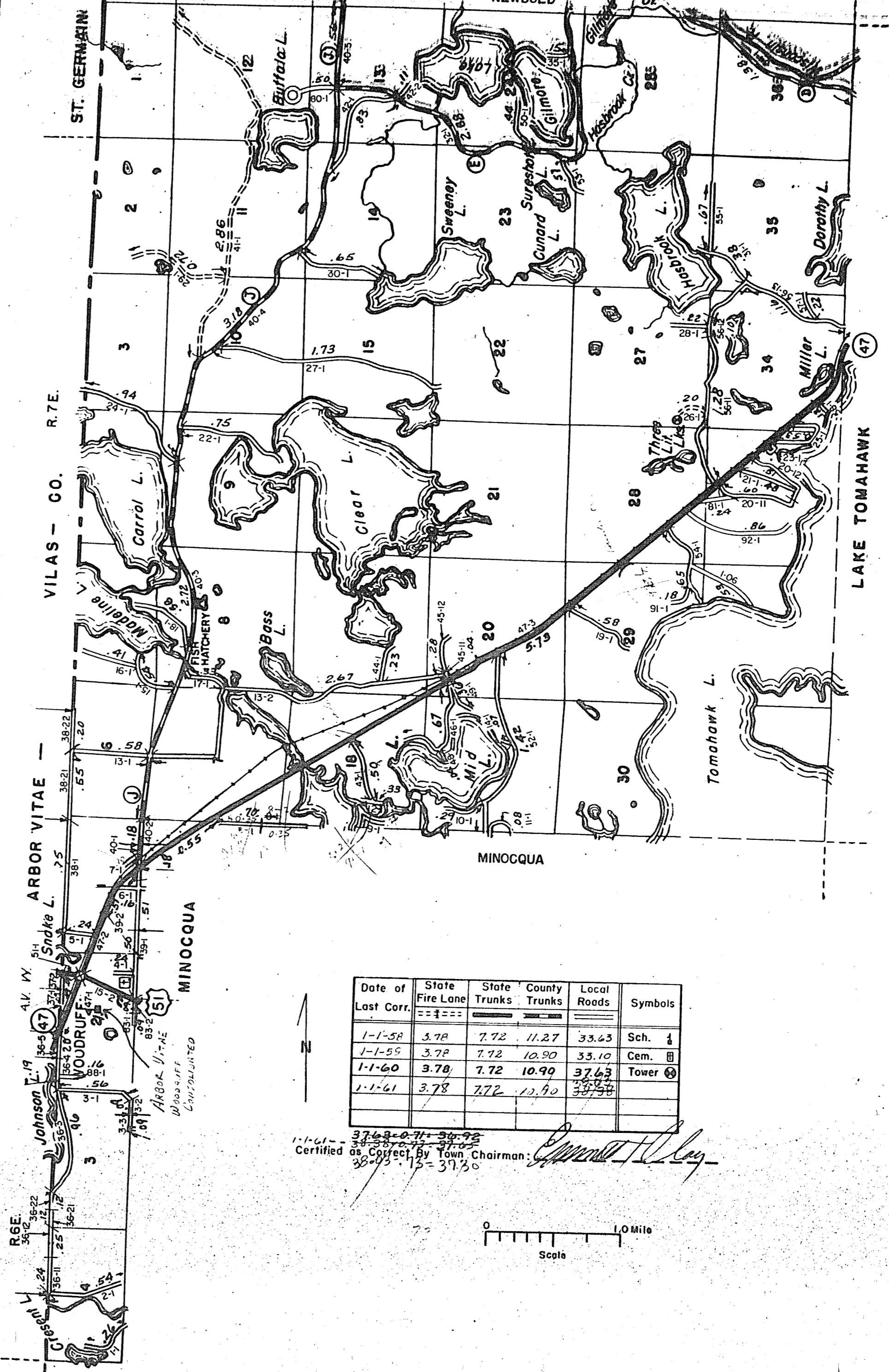
WOODBORO

STATE HIGHWAY COMM. OF WISCONSIN
TOWN PLAT RECORD

Town - WOODRUFF County - ONEIDA (43-828A)
T. 39 N. NEWBOLD

Date of Last Corr.	State Fire Lane	State Trunks	County Trunks	Local Roads	Symbols
1-1-58	3.78	7.72	11.27	33.63	Sch. 1
1-1-59	3.78	7.72	10.20	33.10	Cem. 1
1-1-60	3.78	7.72	10.99	37.63	Tower 1
1-1-61	3.78	7.72	12.90	38.97	

37.63-0.31=37.32
38.97-0.32=38.65
Certified as Correct By Town Chairman: *Edward H. Day*
38-95-15=37.80



The last assigned road number is 92.95

WOODRUFF