

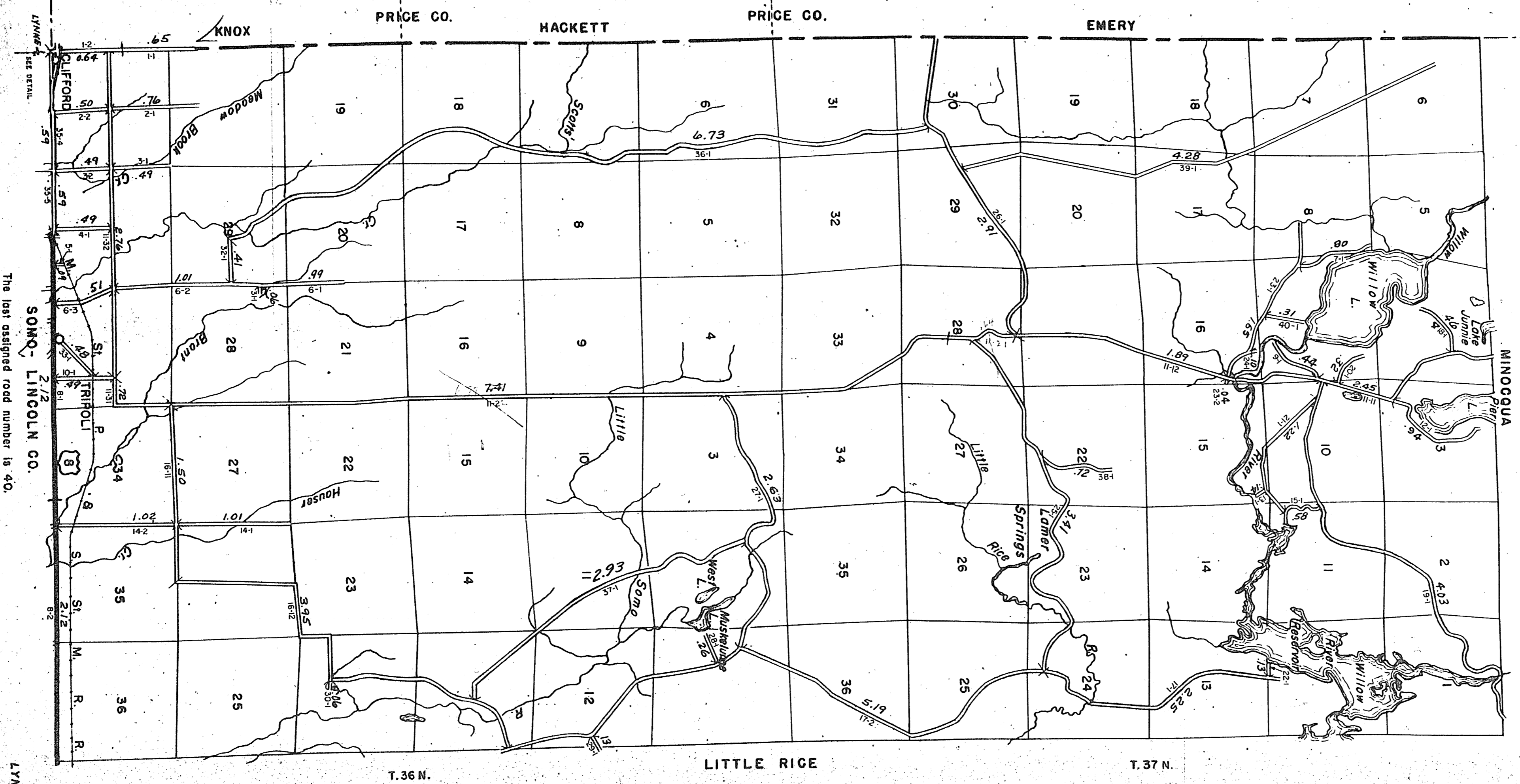
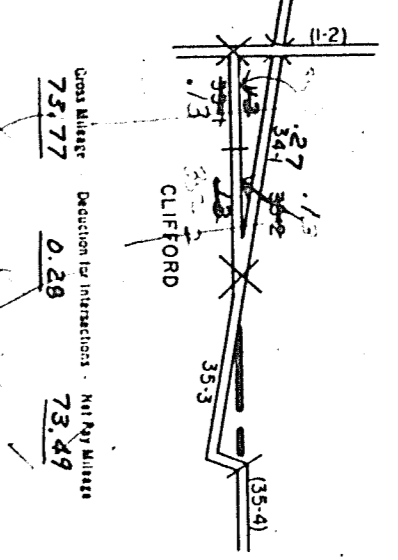
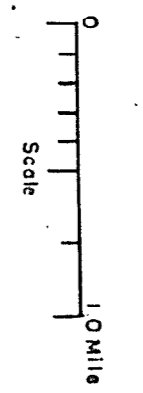
STATE HIGHWAY COMM. OF WISCONSIN
TOWN PLAT RECORD

Town, LYNNE County, ONEIDA (43-007)

Date of Last Cert.	State Trunks	County Trunks	Local Roads	Local Symbols	Sec. 4
1-1-58	2.12	0	70.01	Scm. A	1
1-1-59	2.12	0	69.20	Scm. B	1
1-1-60	2.12	0	73.21	Scm. B	1
1-1-61	2.12	0	73.77	Scm. B	1
1-1-62	2.12	0	73.77	Scm. B	1

Certified as Correct By Town Chairman *Wm. J. ...*

R. 4 E.



The last assigned road number is 40.

SOMO-LINCOLN CO.

LYNNE