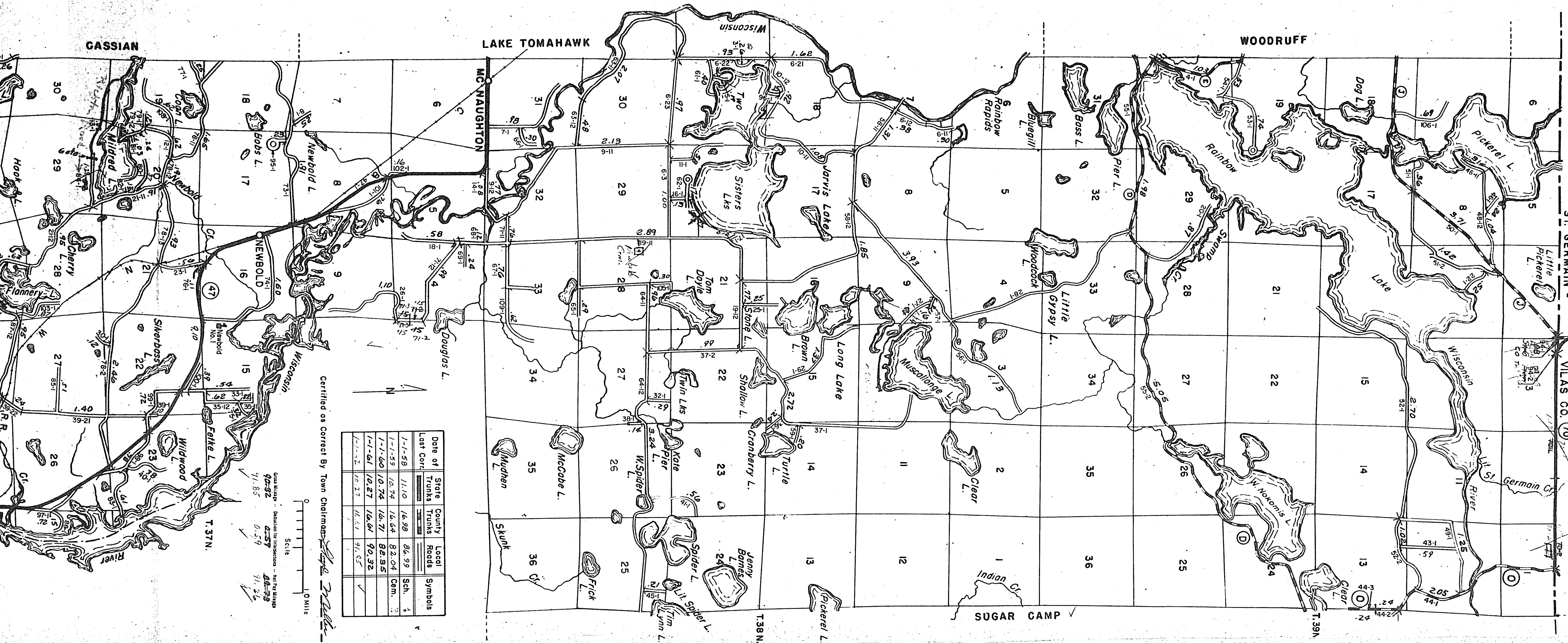


STATE HIGHWAY COMM. OF WISCONSIN
TOWN NEWBOLD
COUNTY ONEIDA (43-010)

R. B. VILAS CO. (70)



Date of Last Corr.	State	County	Local	Symbol
1-1-58	11-10	16-99	86-99	Sch. A
1-1-59	10-74	16-64	83-04	Com. B
1-1-60	10-74	16-71	82-95	
1-1-61	10-87	16-61	80-32	
1-1-62	06-37	16-61	91-65	

Certified as Correct By Town Chairman *[Signature]*

Scale
0 10 Miles
0 10 Miles

Cons. Maps - 90-82
0-57
41-85
0-59
44-39
71-21