

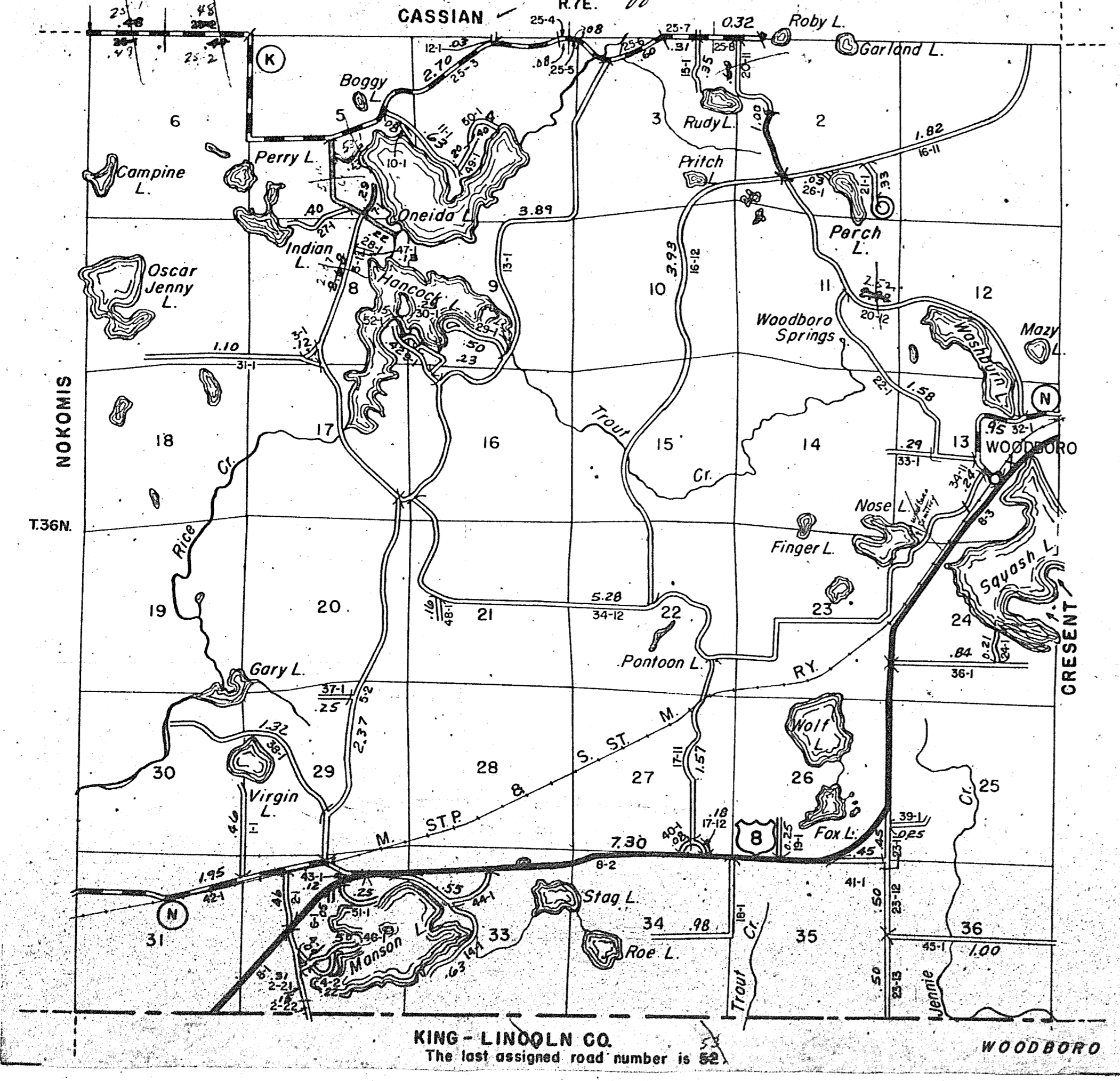
STATE HIGHWAY COMM. OF WISCONSIN  
TOWN PLAT RECORD

Town - WOODBORO County - ONEIDA (43-019)

Date of Last Corr.	State Trunks	County Trunks	Local Roads	Symbols
1-1-58	7.30	7.47	44.35	Sch. 1
1-1-59	7.30	7.21	42.73	Cem. 1
1-1-60	7.30	7.20	43.72	
1-1-61	7.30	7.20	43.87	
1-1-62	7.30	7.20	44.10	

Gross Mileage 43.87    Deduction for Intersections 0.32    Net Pay Mileage 43.55  
 44.10    0.32    43.78

Certified as Correct By Town Chairman: *Clifford Beard*

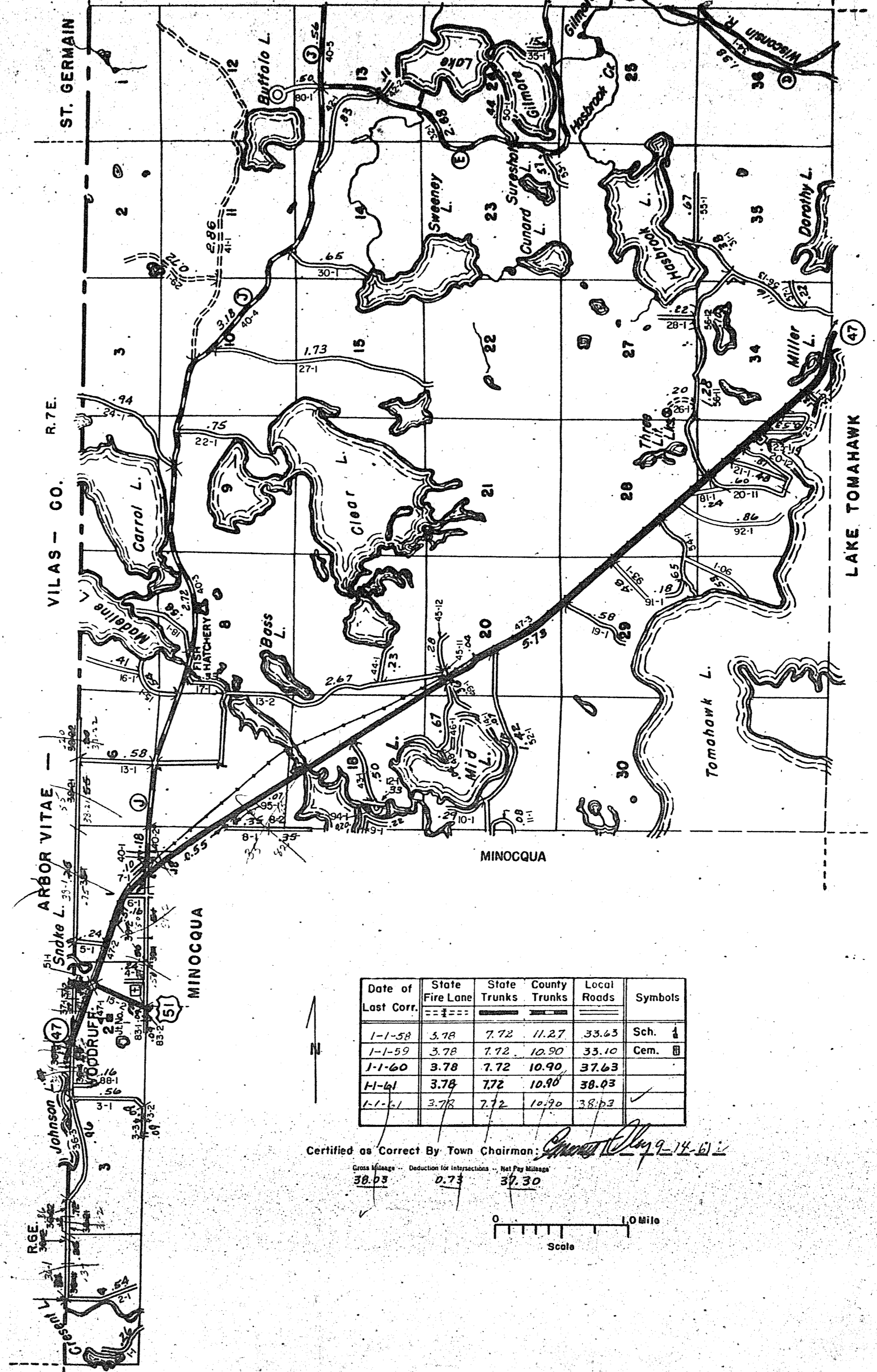


KING - LINCOLN CO.  
The last assigned road number is 52.

WOODBORO

STATE HIGHWAY COMM. OF WISCONSIN  
TOWN PLAT RECORD

Town - WOODRUFF County - ONEIDA (43-020A)  
T. 39 N. NEWBOLD



Date of Last Corr.	State Fire Lane	State Trunks	County Trunks	Local Roads	Symbols
1-1-58	3.78	7.72	11.27	33.63	Sch. 1
1-1-59	3.78	7.72	10.90	33.10	Cem. 1
1-1-60	3.78	7.72	10.90	37.63	
1-1-61	3.78	7.72	10.90	38.03	
1-1-62	3.78	7.72	10.90	38.03	

Certified as Correct By Town Chairman: *James C. DeWitt*

Gross Mileage 38.03    Deduction for Intersections 0.73    Net Pay Mileage 37.30

The last assigned road number is 96.

WOODRUFF