

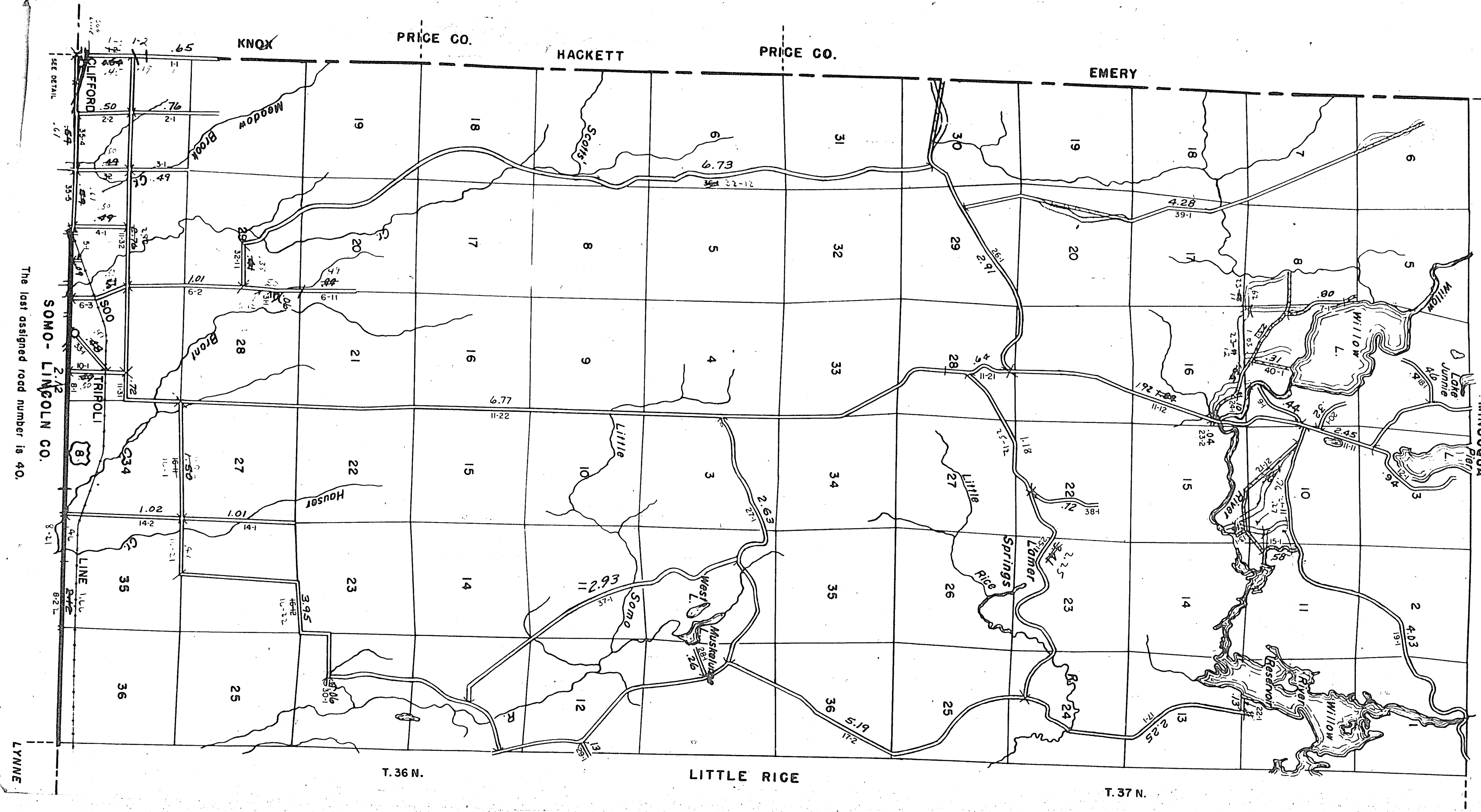
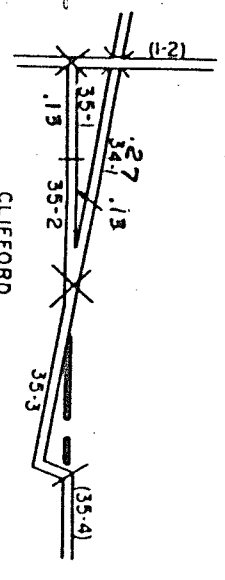
STATE HIGHWAY COMM. OF WISCONSIN  
TOWN PLAT RECORD

Town, LYNNE County, ONEIDA (43-007)

Date of Last Cor'd	State Turns	County Turns	Local Roads	Local Roads	Symbol
1-1-58	2.12	0	70.07	69.20	Com. 4
1-1-60	2.12	0	73.21	73.21	Com. 4
1-1-62	2.12	0	73.77	73.77	Com. 4
1-1-65	2.12	0	73.89	73.89	Com. 4

Comp. Made - Section by Instrument - All by State  
73-89 0.28 73-89 73.61

Certified as Correct By Town Chairman, *[Signature]*  
R. 4 E.



SOMO - LINCOLN CO.  
The last assigned road number is 40.