

STATE HIGHWAY COMM. OF WISCONSIN
TOWN PLAT RECORD

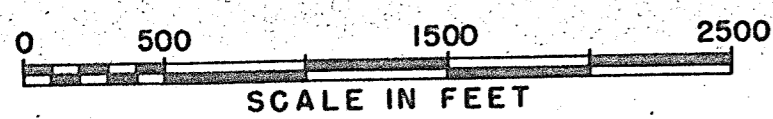
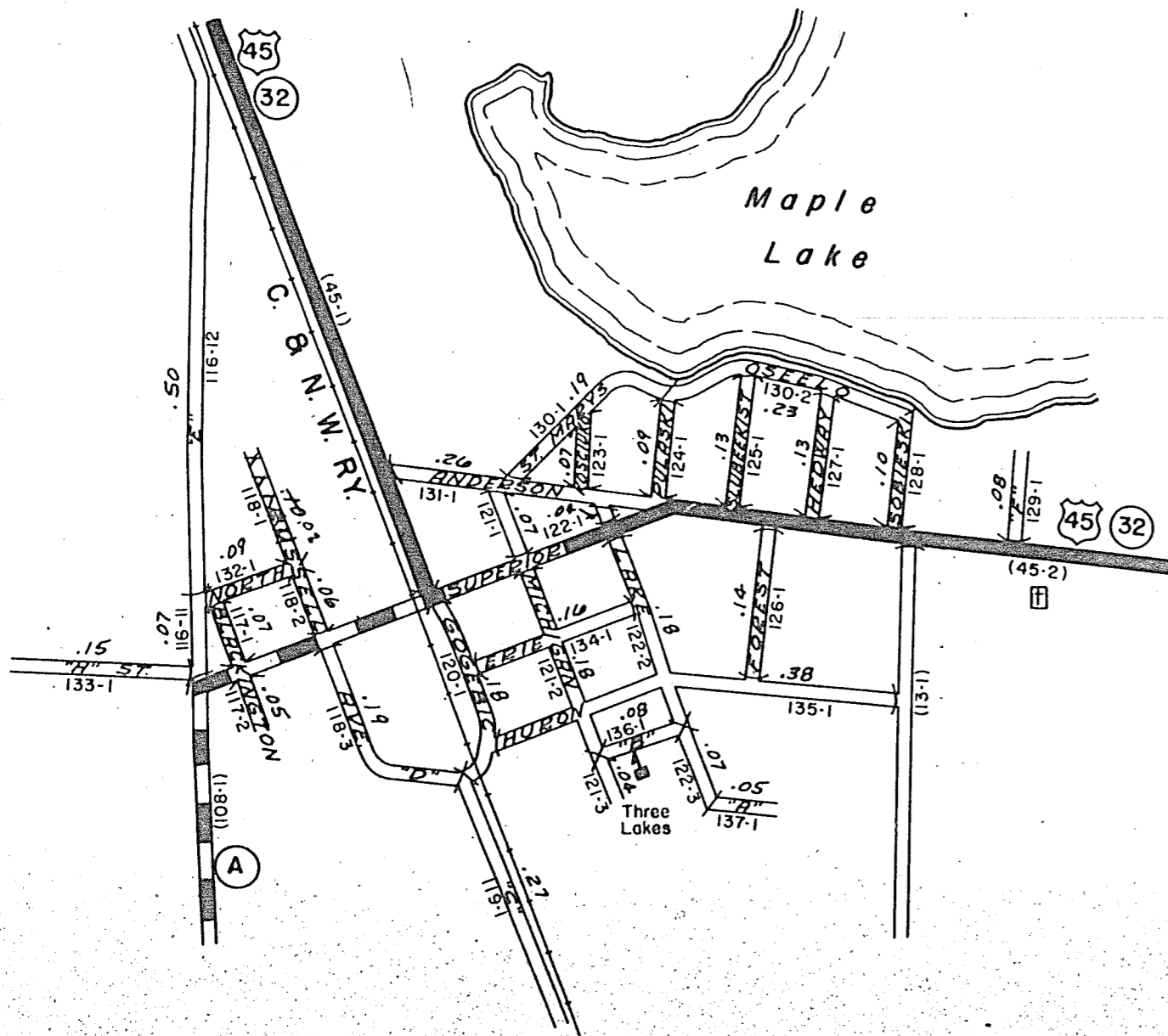
THREE LAKES - UNINCORPORATED (43-018B)

Date of Last Corr.	State Trunks	County Trunks	Local Roads	Symbols
1-1-58	0	0	4.14	Sch. 1
1-1-59	0	0	4.14	Cem. 1
1-1-60	0	0	4.40	
1-1-61	0	0	4.40	
1-1-62	0	0	4.40	
1-1-63	0	0	4.32	

W.H.C. Copy

Certified as Correct By Town Chairman

J. H. [Signature]



THREE LAKES

State Highway Commission of Wisconsin
RURAL PLATTED AREA - LOCAL ROAD STREET LIST
Town Three Lakes Community Three Lakes (43-018B) County Oneida
Sheet 1 of 2
Date 7-27-60
Plat No. 18A-20

Road No.	Street Name	Gross Length		Intersections		Net Length (Feet)	Notes
		Miles	Feet	No.	Ft. Dist.		
116-11		0.07	✓				
116-12	"E"	0.50	✓				
117-1	Blackington	0.07	✓				
117-2	Blackington	0.05	✓				
118-1	Russell	0.06	✓				
118-2	Russell	0.06	✓				
118-3	Russell Ave "D"	0.19	✓				
119-1	"C"	0.27	✓				
120-1	GOGEBIC	0.18	✓				
121-1	Michigan	0.07	✓				
121-2	Michigan	0.18	✓				
121-3	Michigan	0.04	✓				
122-1	Lake	0.04	✓				
122-2	Lake	0.18	✓				
122-3	Lake	0.07	✓				
123-1	Kosciusko	0.07	✓				
124-1	Pulaski	0.09	✓				
125-1	Blanchard	0.13	✓				
126-1	Forest	0.14	✓				
Totals		2.56					

Certified as Correct

J. H. [Signature]

Town Chairman

Page Miles

State Highway Commission of Wisconsin
RURAL PLATTED AREA - LOCAL ROAD STREET LIST
Town Three Lakes Community Three Lakes (43-018B) County Oneida
Sheet 2 of 2
Date 7-27-60
Plat No. 18A-20

Road No.	Street Name	Gross Length		Intersections		Net Length (Feet)	Notes
		Miles	Feet	No.	Ft. Dist.		
127-1	Hodway	0.13	✓				
128-1	Soblenki	0.10	✓				
129-1	"W" Street	0.08	✓				
130-1	St. Mary's	0.19	✓				
130-2	Osella	0.23	✓				
131-1	Anderson	0.26	✓				
132-1	North	0.09	✓				
133-1	"H"	0.15	✓				
134-1	ERIE	0.16	✓				
135-1	HUBBARD	0.38	✓				
136-1	"B" Street	0.08	✓				
137-1	"A" Street	0.05	✓				
Totals		4.22		21			

Certified as Correct

J. H. [Signature]

Town Chairman

Page Miles

4.22 4.11