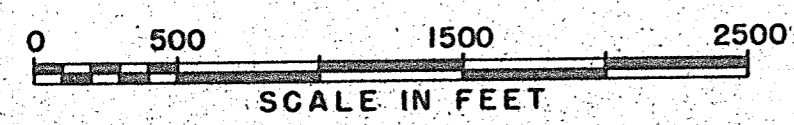
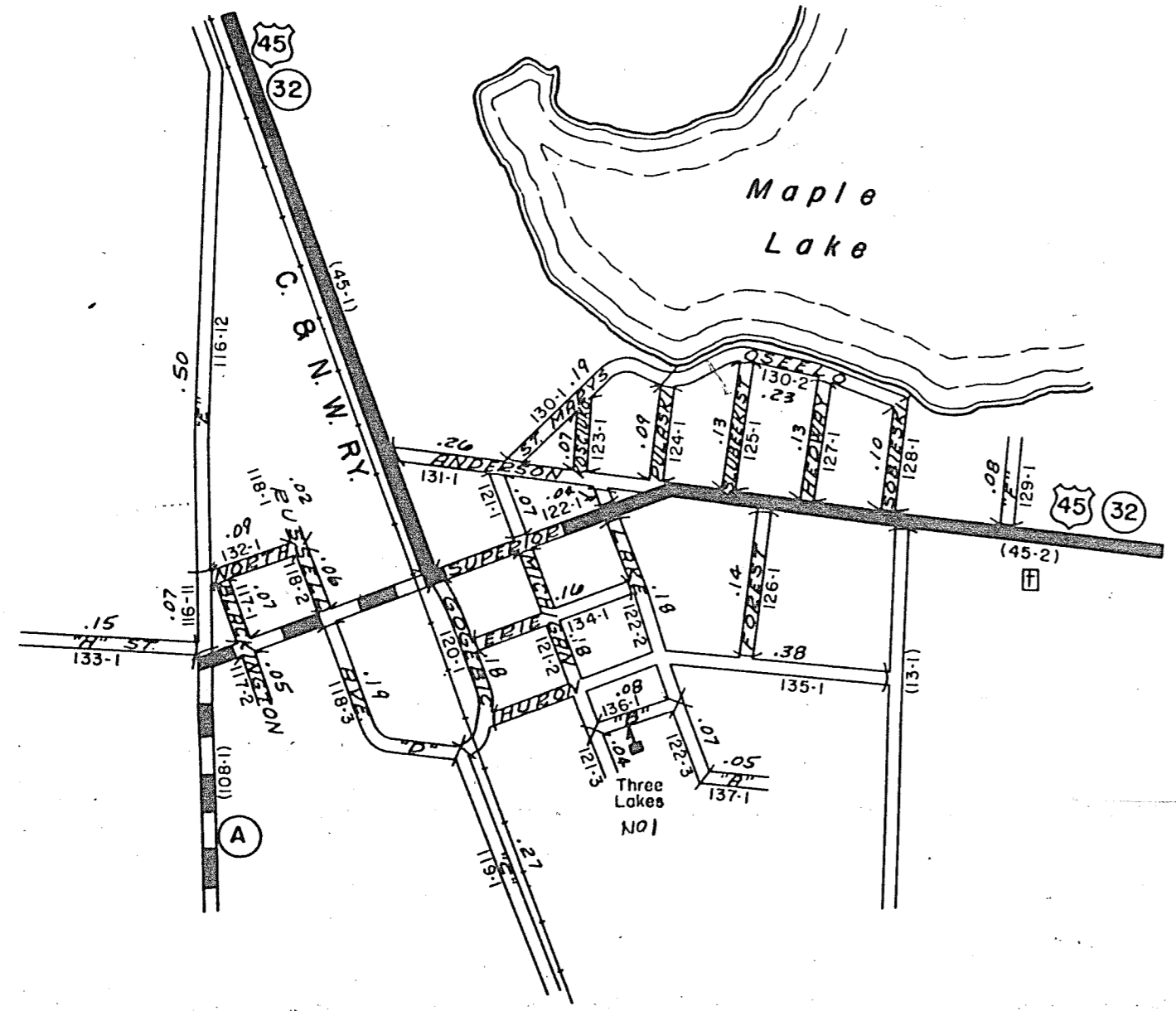


STATE HIGHWAY COMM. OF WISCONSIN  
TOWN PLAT RECORD  
THREE LAKES - UNINCORPORATED (43-018B)

Date of Last Corr.	State Trunks	County Trunks	Local Roods	Symbols
1-1-64			4.32	Sch. 4
1-1-59	0	0	4.14	Cem. 11
1-1-60	0	0	4.40	
1-1-61	0	0	4.40	
1-1-62			4.40	
1-1-63			4.32	

Certified as Correct By Town Chairman: \_\_\_\_\_



THREE LAKES

State Highway Commission of Wisconsin  
RURAL PLATTED AREA - LOCAL ROAD STREET LIST  
Town: Three Lakes Community: Three Lakes (43-018B) County: Oneida Sheet 1 of 2 Date: 1963 Plat No. 18A-20

Road No.	Street Name	Gross Length		Intersections		Net Length (Feet)	C
		Miles	Feet	No.	Ft. Deduct.		
116-11		0.07	✓				
116-12	"B"	0.50	✓				
117-1	Blackington	0.07	✓				
117-2	Blackington	0.05	✓				
118-1	Russell	0.02	✓				
118-2	Russell	0.06	✓				
118-3	"D" Avenue	0.19	✓				
119-1	"C"	0.27	✓				
120-1	Gogebio	0.18	✓				
121-1	Michigan	0.07	✓				
121-2	Michigan	0.18	✓				
121-3	Michigan	0.04	✓				
122-1	Lake	0.04	✓				
122-2	Lake	0.18	✓				
122-3	Lake	0.07	✓				
123-1	Kosciuski	0.07	✓				
124-1	Pulaski	0.09	✓				
125-1	Slubekist	0.13	✓				
126-1	Forest	0.11	✓				
Totals		2.42	✓				

Certified as Correct \_\_\_\_\_ Pay Miles \_\_\_\_\_

State Highway Commission of Wisconsin  
RURAL PLATTED AREA - LOCAL ROAD STREET LIST  
Town: Three Lakes Community: Three Lakes (43-018B) County: Oneida Sheet 2 of 2 Date: 1963 Plat No. 18A-20

Road No.	Street Name	Gross Length		Intersections		Net Length (Feet)	C
		Miles	Feet	No.	Ft. Deduct.		
127-1	Hedway	0.13	✓				
128-1	Slubekist	0.10	✓				
129-1	"B" Street	0.08	✓				
130-1	St. Mary's	0.19	✓				
130-2	Oscolo	0.23	✓				
131-1	Anderson	0.26	✓				
132-1	North	0.09	✓				
133-1	"H"	0.15	✓				
134-1	Erie	0.16	✓				
135-1	Huron	0.38	✓				
136-1	"B" Street	0.08	✓				
137-1	"A" Street	0.05	✓				
Totals		1.92	✓				
Totals		4.32	✓	21			

Certified as Correct \_\_\_\_\_ Pay Miles 4.11