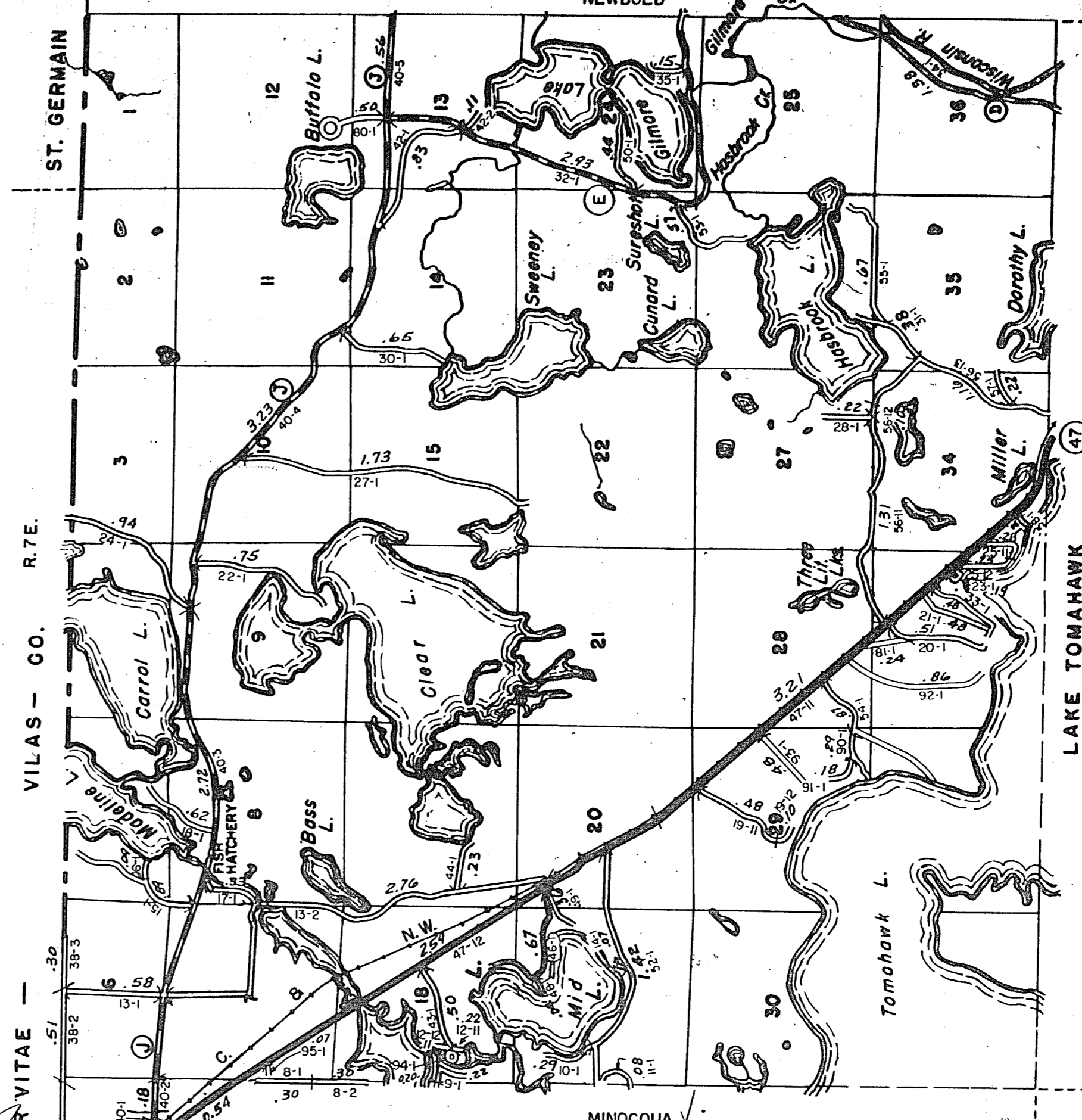


STATE HIGHWAY COMM. OF WISCONSIN
TOWN PLAT RECORD

RETURN THIS PLAT

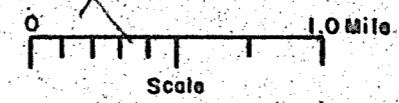
Town-WOODRUFF County-ONEIDA (43-020 A)
T. 39 N. NEWBOLD



Date of Last Corr.	State Fire Lane	State Trunks	County Trunks	Local Roads	Symbols
1-1-64		7.77	11.00	36.77	Sch. 4
1-1-59	3.78	7.72	10.90	35.10	Cem. 11
1-1-60	3.78	7.72	10.90	37.63	
1-1-61	3.78	7.72	10.90	38.03	
1-1-62	3.78	7.72	10.90	38.03	
1-1-63		7.77	11.00	36.64	

Certified as Correct By Town Chairman: *[Signature]*

Gross Mileage - Deduction for Intersections - Net Pay Mileage
36.64 - 0.70 = 35.94



The last assigned road number is 26.77

WOODRUFF

STATE HIGHWAY COMM. OF WISCONSIN
TOWN PLAT RECORD

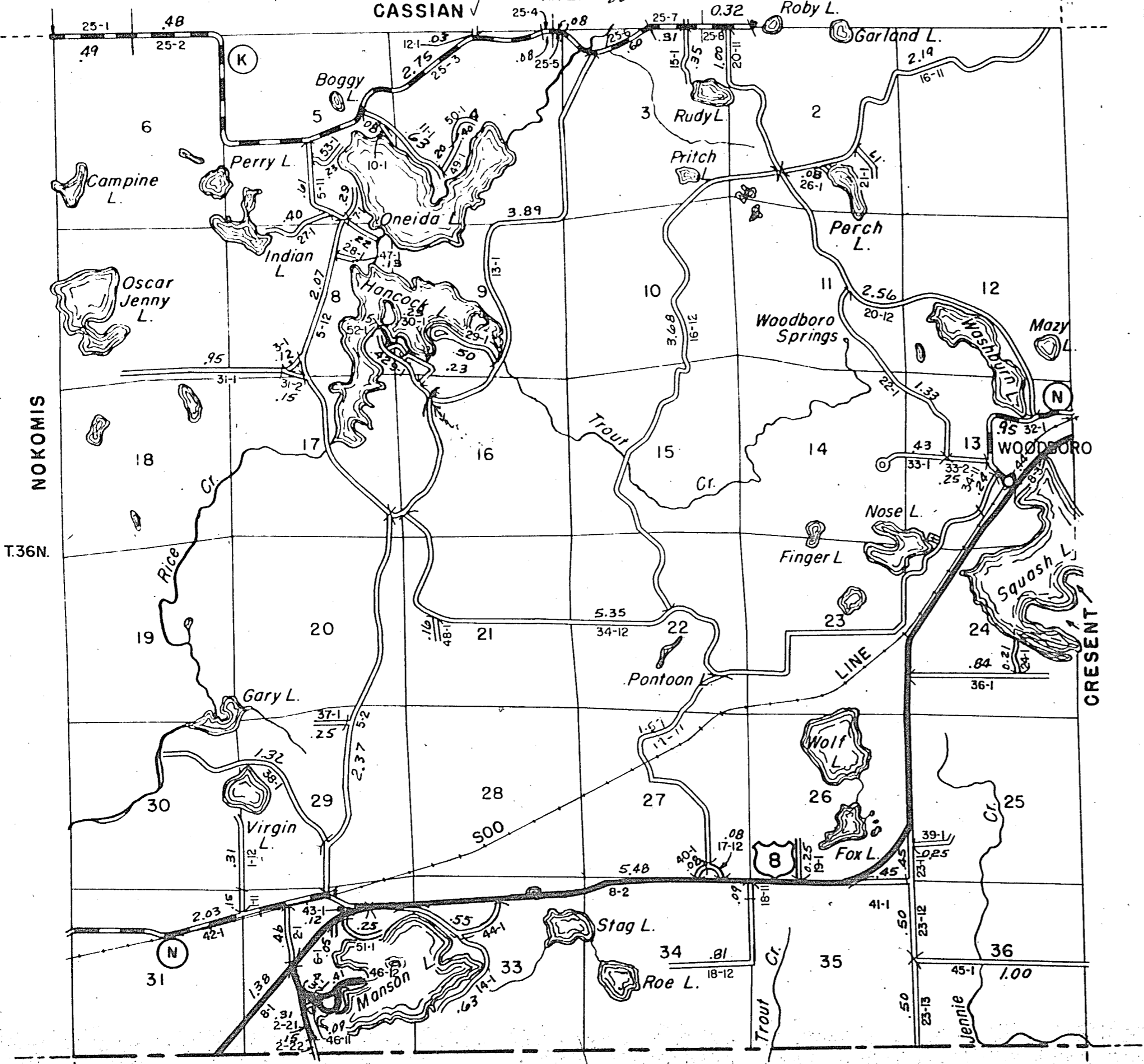
RETURN THIS PLAT

Town-WOODBORO County-ONEIDA (43-019)

Date of Last Corr.	State Trunks	County Trunks	Local Roads	Symbols
1-1-64	7.30	7.21	44.31	Sch. 4
1-1-59	7.30	7.21	42.73	Cem. 11
1-1-60	7.30	7.20	43.72	
1-1-61	7.30	7.20	43.87	
1-1-62	7.30	7.20	44.10	
1-1-63	7.30	7.21	44.31	

Gross Mileage - Deduction for Intersections - Net Pay Mileage
44.31 - 0.32 = 43.99

Certified as Correct By Town Chairman: *[Signature]*



KING - LINCOLN CO.
The last assigned road number is 53.

WOODBORO