

STATE HIGHWAY COMM. OF WISCONSIN  
TOWN PLAT RECORD

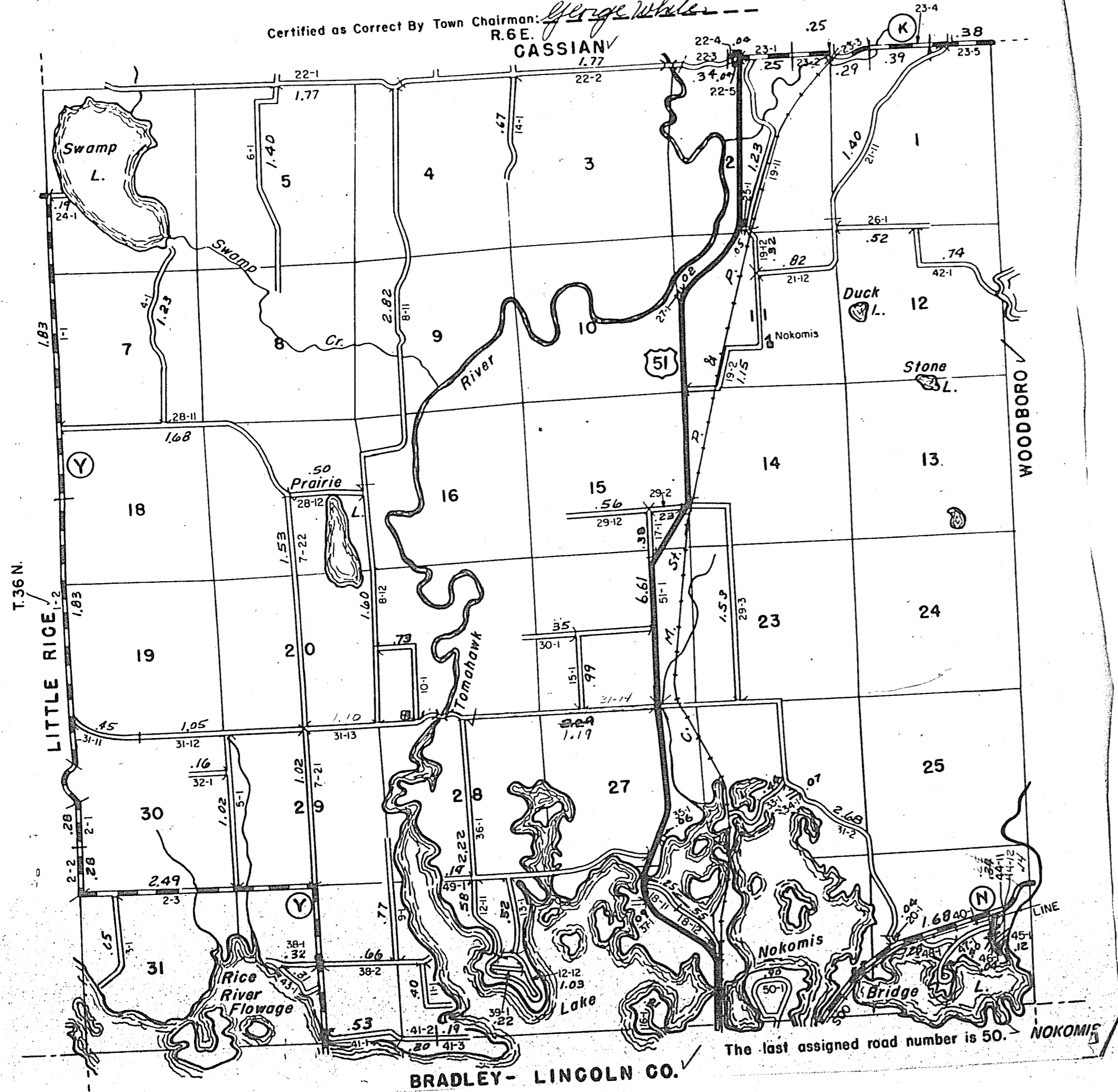
RETURN THIS PLAT

Town - NOKOMIS County - ONEIDA (43-011)

| Date of Last Corr. | State Trunks | County Trunks | Local Roads | Symbols |
|--------------------|--------------|---------------|-------------|---------|
| 1-1-64             | 6.61         | 7.21          | 45.89       | Sch. 4  |
| 1-1-65             | 6.81         | 7.18          | 43.50       | Cem. II |
| 1-1-60             | 6.61         | 7.18          | 44.68       |         |
| 1-1-61             | 6.61         | 7.18          | 45.77       |         |
| 1-1-62             | 6.61         | 7.18          | 45.77       |         |
| 1-1-63             | 6.61         | 7.21          | 45.89       |         |

Gross Mileage 45.87  
Deduction for Intersections 0.34  
Net Pay Mileage 45.55

Certified as Correct By Town Chairman: *George White*  
R.6E.



BRADLEY - LINCOLN CO.

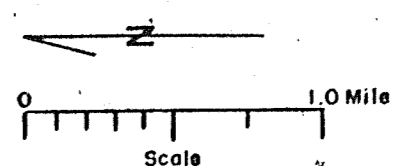
The last assigned road number is 50.

STATE HIGHWAY COMM. OF WISCONSIN  
TOWN PLAT RECORD

RETURN THIS PLAT

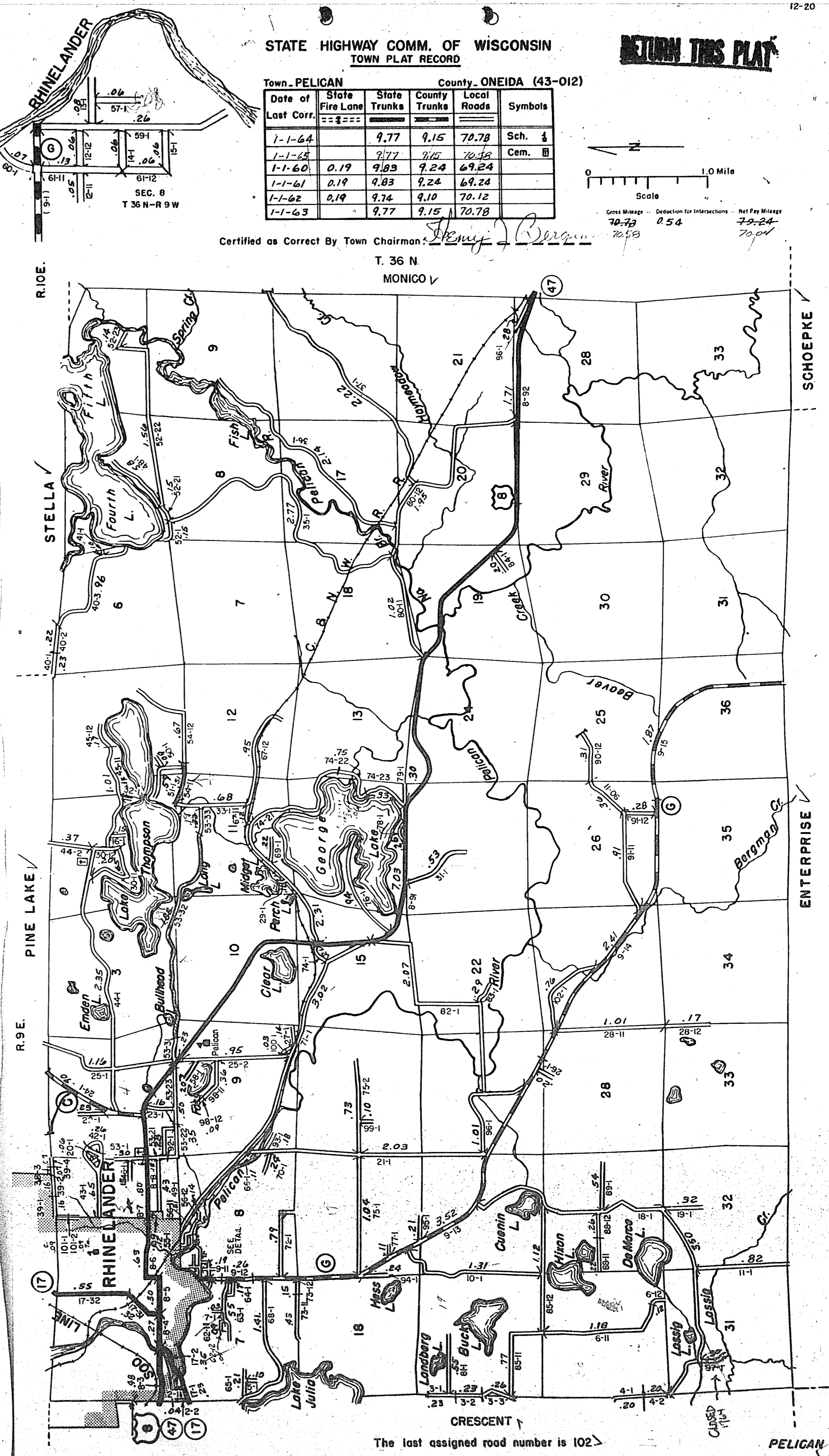
Town - PELICAN County - ONEIDA (43-012)

| Date of Last Corr. | State Fire Lane | State Trunks | County Trunks | Local Roads | Symbols |
|--------------------|-----------------|--------------|---------------|-------------|---------|
| 1-1-64             |                 | 9.77         | 9.15          | 70.78       | Sch. 4  |
| 1-1-65             |                 | 9.77         | 9.15          | 70.78       | Cem. II |
| 1-1-60             | 0.19            | 9.85         | 9.24          | 69.24       |         |
| 1-1-61             | 0.19            | 9.83         | 9.24          | 69.24       |         |
| 1-1-62             | 0.19            | 9.74         | 9.10          | 70.12       |         |
| 1-1-63             |                 | 9.77         | 9.15          | 70.78       |         |



Gross Mileage 70.78  
Deduction for Intersections 0.54  
Net Pay Mileage 70.24

Certified as Correct By Town Chairman: *Henry Bergin*  
T. 36 N  
MONICO V



CRESCENT  
The last assigned road number is 102.

PELICAN