

STATE HIGHWAY COMM. OF WISCONSIN
TOWN PLAT RECORD

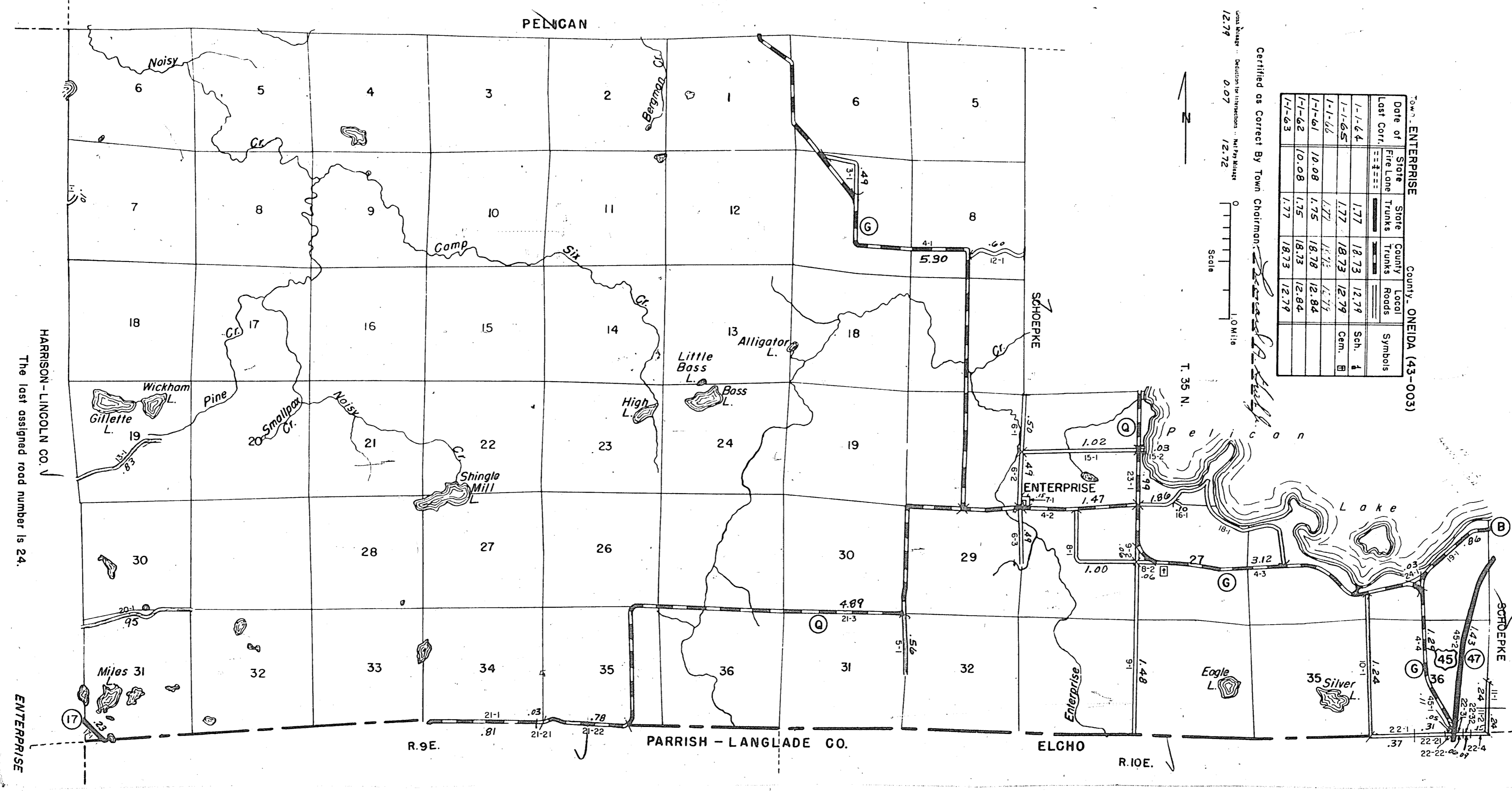
RETURN THIS PLAT

3-20

Town of ENTERPRISE County, ONEIDA (43-003)

Date of Last Conf.	State Fire Lane	State Trunks	County Trunks	Local Roads	Symbols
1-1-44	---	---	---	---	---
1-1-65	---	---	---	---	Sch. 4
1-1-66	---	---	---	---	Com. B
1-1-61	10.08	1.75	18.78	12.84	
1-1-62	10.08	1.75	18.78	12.84	
1-1-63	1.77	1.77	18.73	12.79	

Certified as Correct By Town Chairman: *[Signature]*
Scale 1.0 Mile
1:2,174
0.07
1:2,712



HARRISON - LINCOLN CO. V
The last assigned road number is 24.

ENTERPRISE