

STATE HIGHWAY COMM. OF WISCONSIN  
TOWN PLAT RECORD

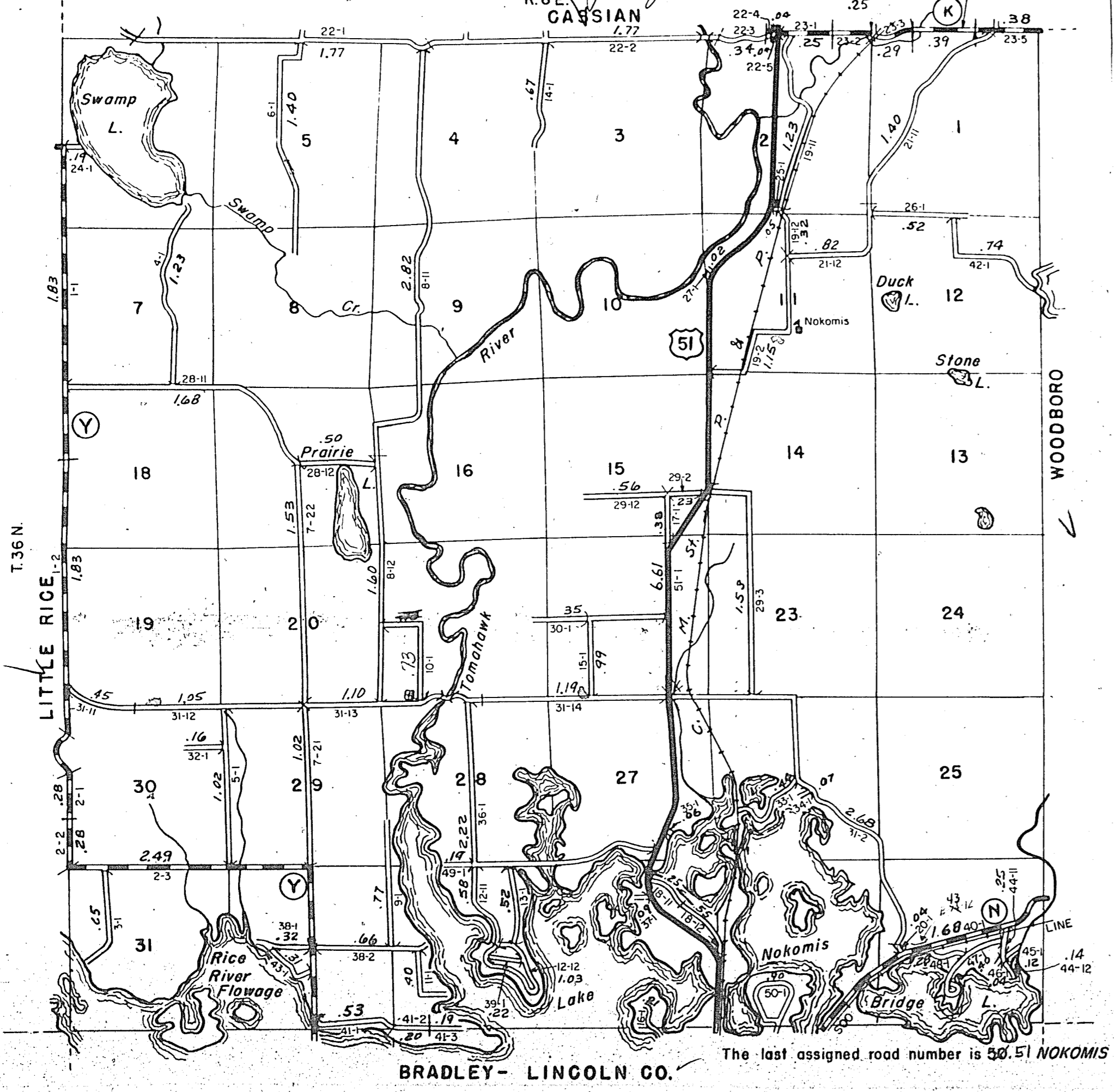
**RETURN THIS PLAT**

Town - NOKOMIS County - ONEIDA (43-011)

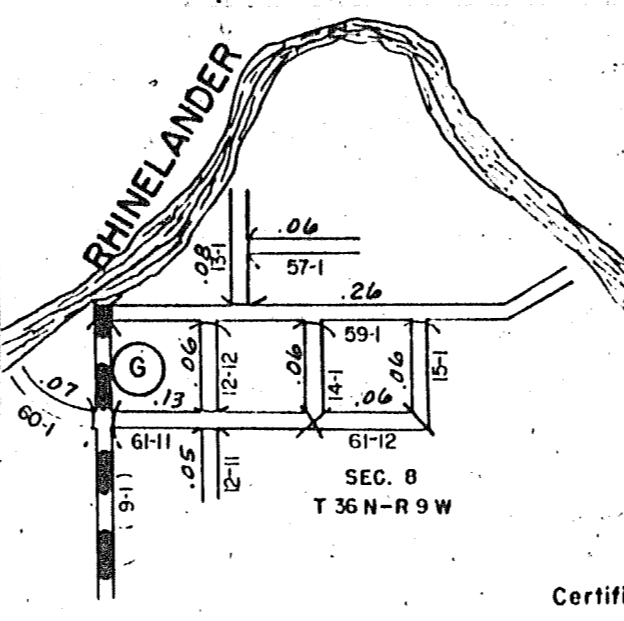
Date of Last Corr.	State Trunks	County Trunks	Local Roads	Symbols
1-1-64	6.61	7.21	45.89	Sch. 4
1-1-65	6.61	7.21	45.89	Cem. 11
1-1-66	6.61	7.21	45.89	
1-1-61	6.61	7.18	44.68	
1-1-62	6.61	7.18	45.77	
1-1-63	6.61	7.21	45.89	

Gross Mileage 45.87 Deduction for Intersections 0.34 Net Pay Mileage 45.55

Certified as Correct By Town Chairman: *George White*  
R. 6 E.



BRADLEY - LINCOLN CO.



STATE HIGHWAY COMM. OF WISCONSIN  
TOWN PLAT RECORD

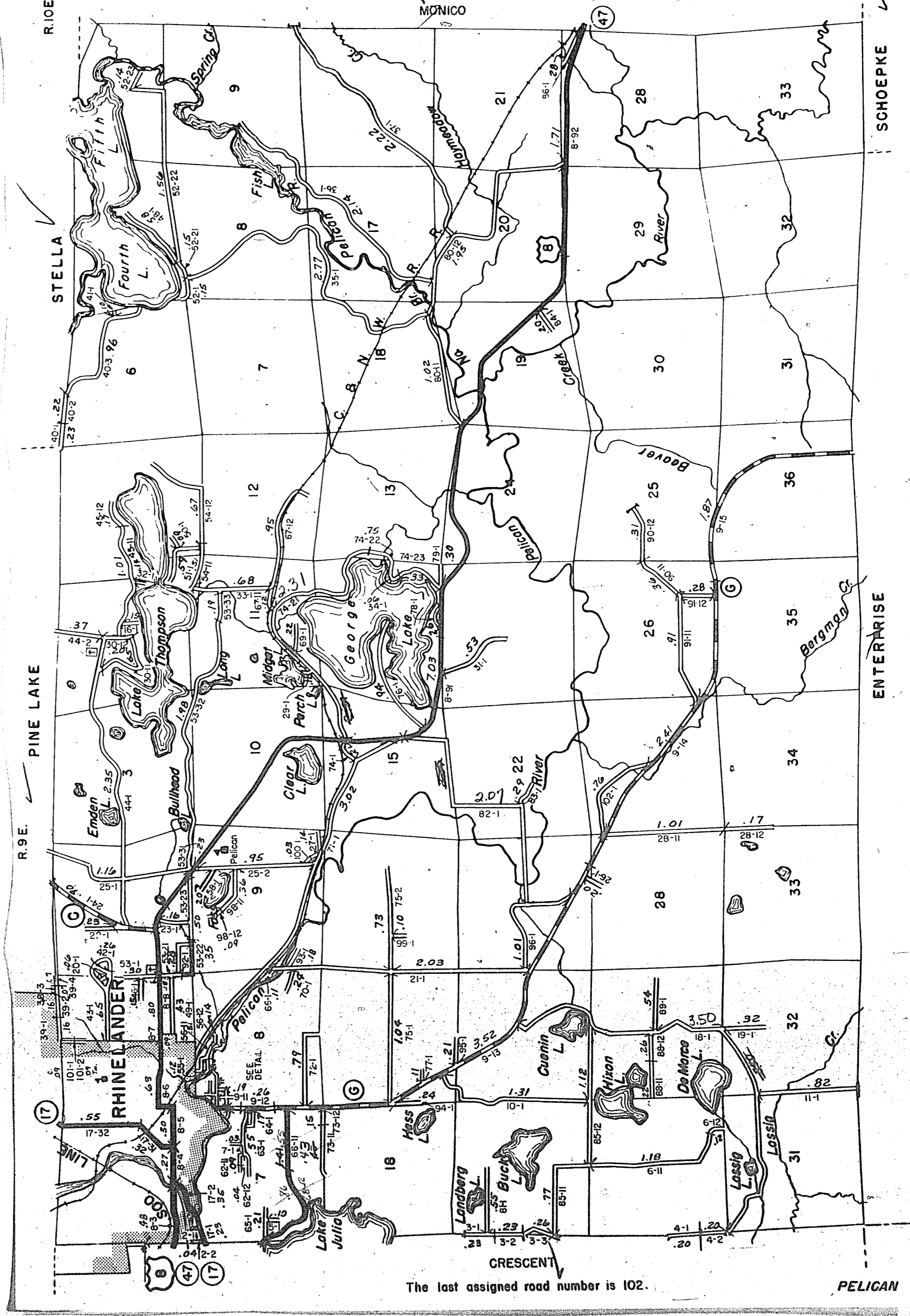
**RETURN THIS PLAT**

Town - PELICAN County - ONEIDA (43-012)

Date of Last Corr.	State Fire Lane	State Trunks	County Trunks	Local Roads	Symbols
1-1-64		9.77	9.15	70.78	Sch. 4
1-1-65		9.77	9.15	70.58	Cem. 11
1-1-66		9.77	9.15	70.58	
1-1-61	0.19	9.83	9.24	69.24	
1-1-62	0.19	9.74	9.10	70.12	
1-1-63		9.77	9.15	70.78	

Gross Mileage 70.58 Deduction for Intersections 0.54 Net Pay Mileage 70.04

Certified as Correct By Town Chairman: *Henry J. Bergquist*  
T. 36 N. MONICO



The last assigned road number is 102.

PELICAN