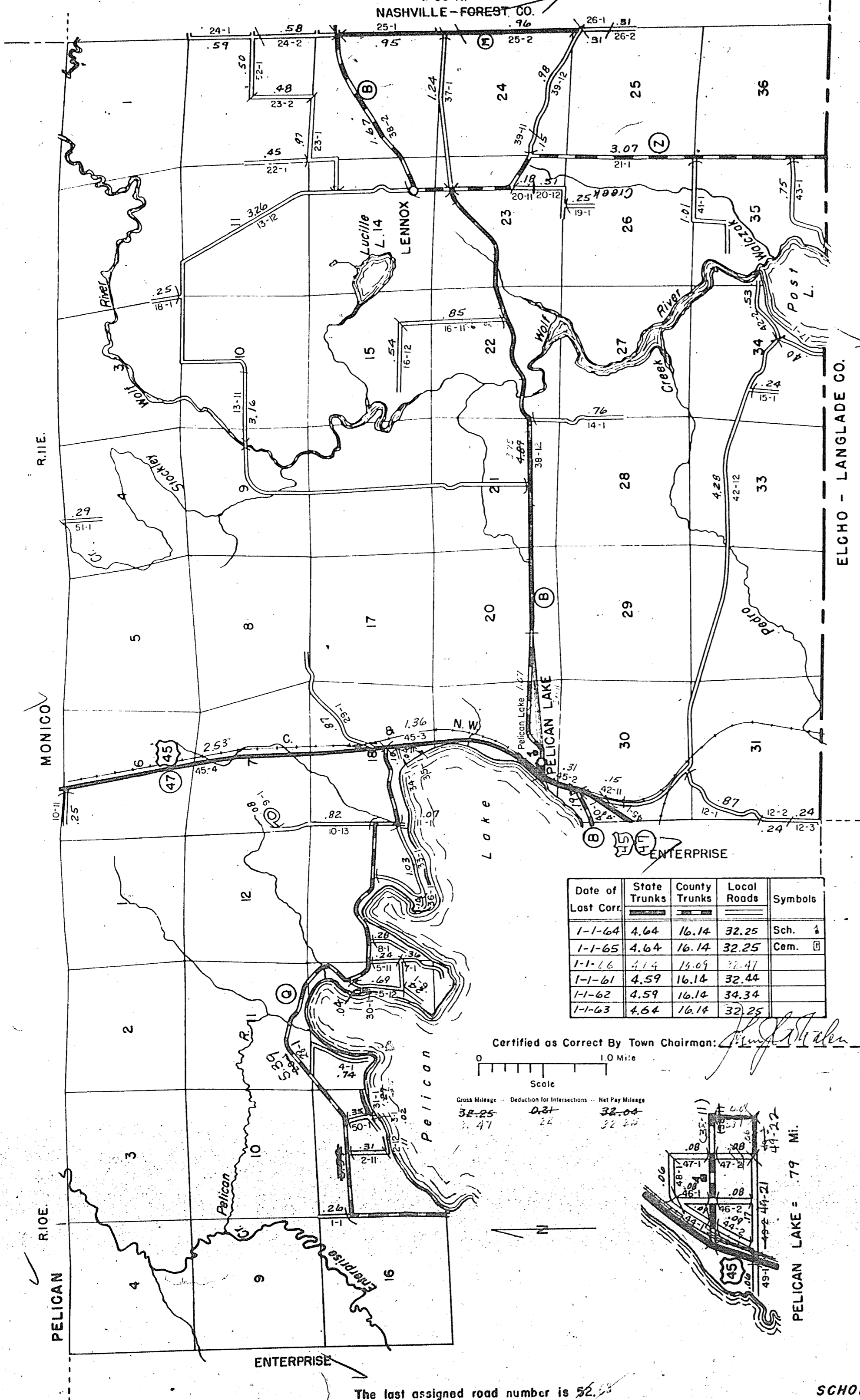


RETURN THIS PLAT

15-20

STATE HIGHWAY COMM. OF WISCONSIN
TOWN PLAT RECORD
Town - SCHOEPKE County - ONEIDA (43-015)

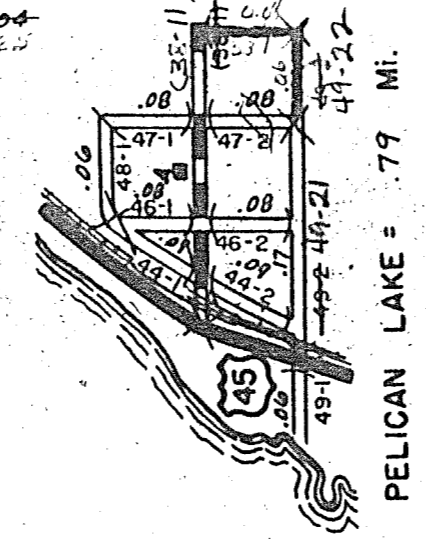
T 35 N.
NASHVILLE - FOREST CO.



Date of Last Corr.	State Trunks	County Trunks	Local Roads	Symbols
1-1-64	4.64	16.14	32.25	Sch. 1
1-1-65	4.64	16.14	32.25	Cem. 1
1-1-66	5.14	15.09	32.44	
1-1-61	4.59	16.14	32.44	
1-1-62	4.59	16.14	34.34	
1-1-63	4.64	16.14	32.25	

Certified as Correct By Town Chairman: *[Signature]*

Gross Mileage: 32.25
Deduction for Intersections: 0.31
Net Pay Mileage: 32.04



PELICAN LAKE = 7.9 Mi.

SCHOEPKE

The last assigned road number is 52.

16-20

RETURN THIS PLAT

STATE HIGHWAY COMM. OF WISCONSIN
TOWN PLAT RECORD

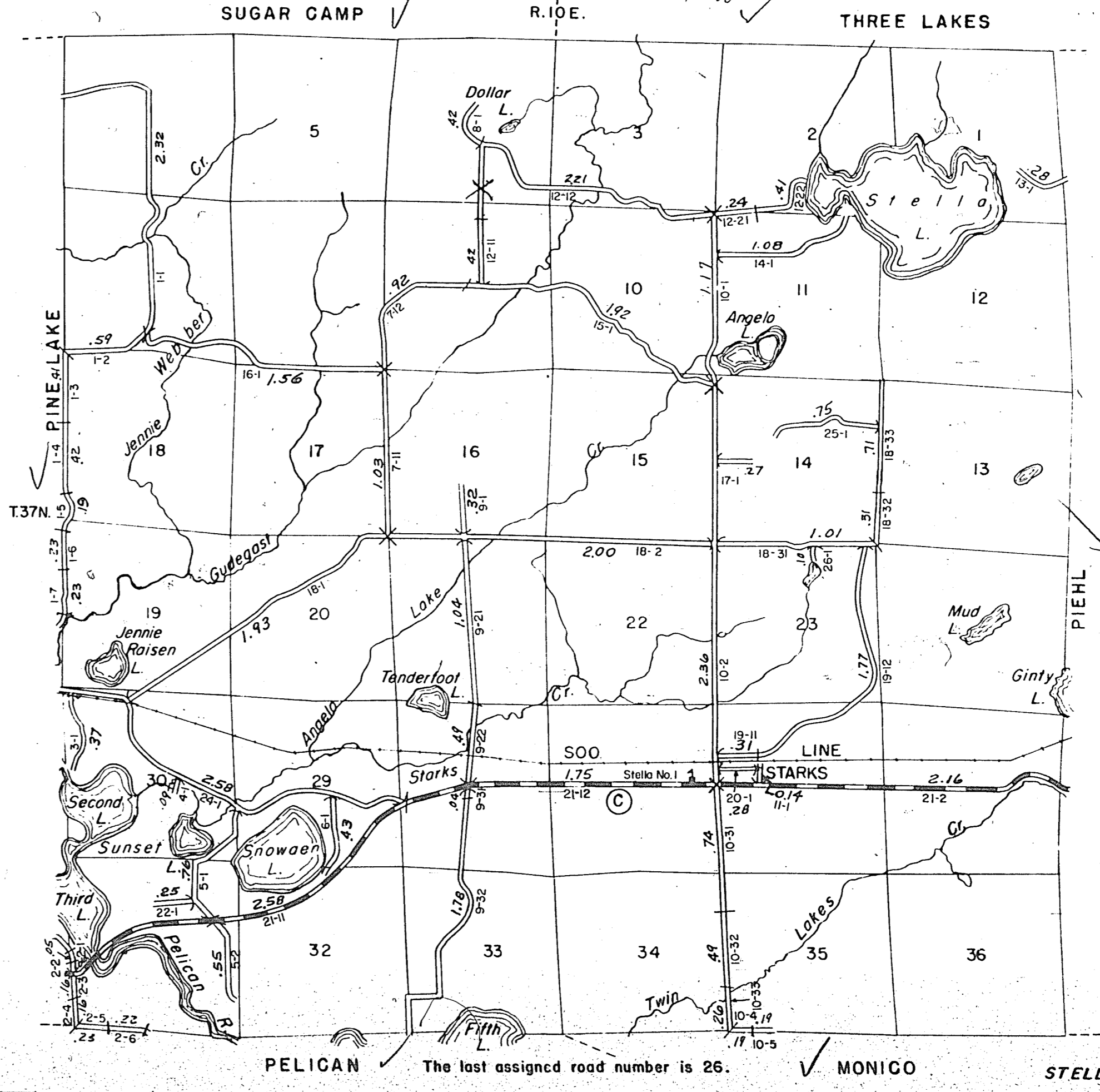
Town - STELLA County - ONEIDA (43-016)

Date of Last Corr.	State Fire Lane	State Trunks	County Trunks	Local Roads	Symbols
1-1-64			6.49	38.17	Sch. 1
1-1-65	3		6.49	38.17	Cem. 1
1-1-66			6.49	38.17	
1-1-61	0.29		6.49	38.14	
1-1-62	0.29		6.49	38.14	
1-1-63			6.49	38.17	

Maintenance Only.

Gross Mileage: 38.17
Deduction for Intersections: 0.16
Net Pay Mileage: 38.01

Certified as Correct By Town Chairman: *[Signature]*



The last assigned road number is 26.

STELLA