

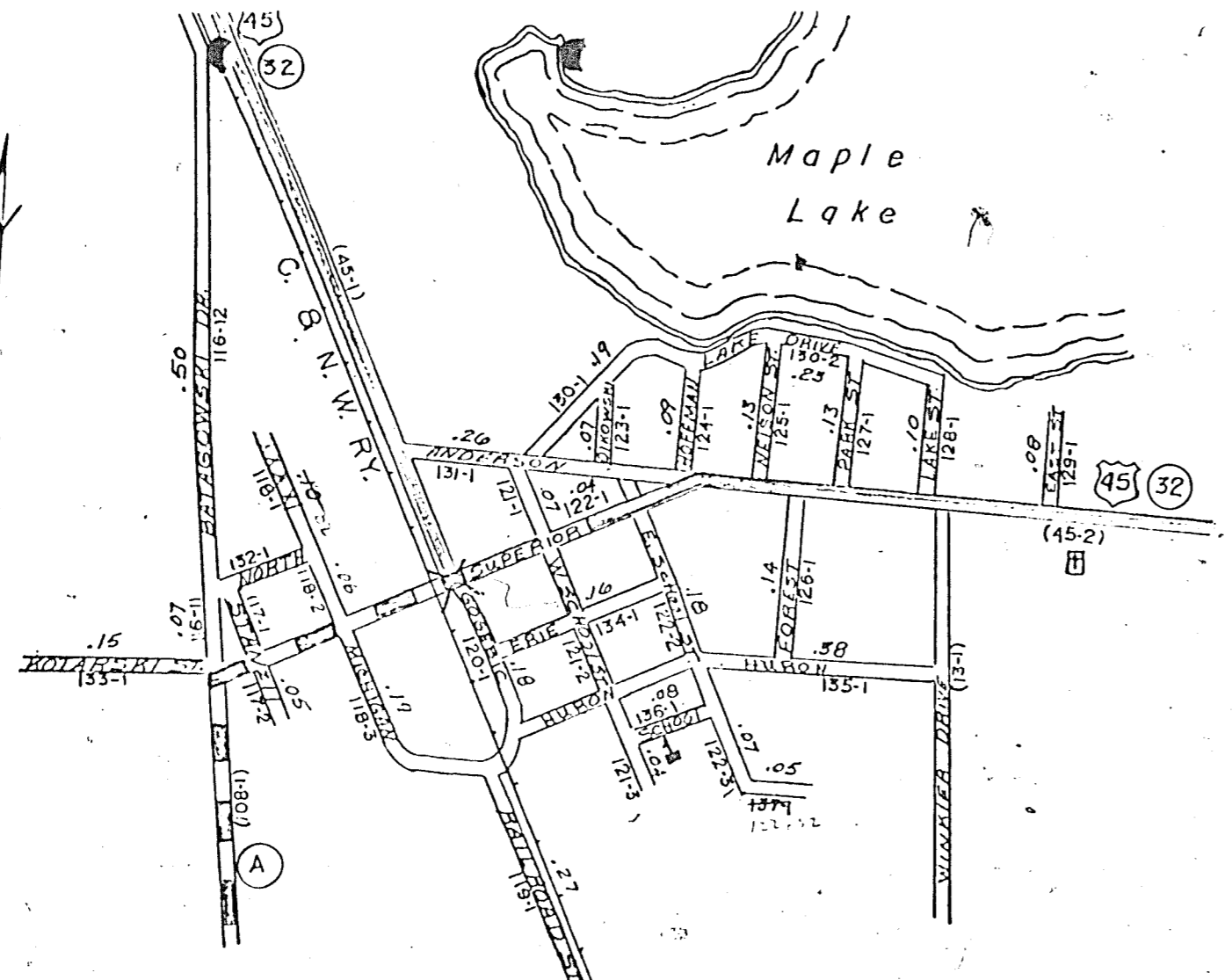
STATE HIGHWAY COMM. OF WISCONSIN  
TOWN PLAT RECORD

RETURN THIS PLAT

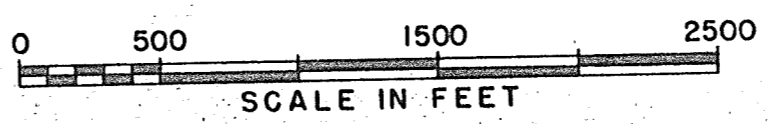
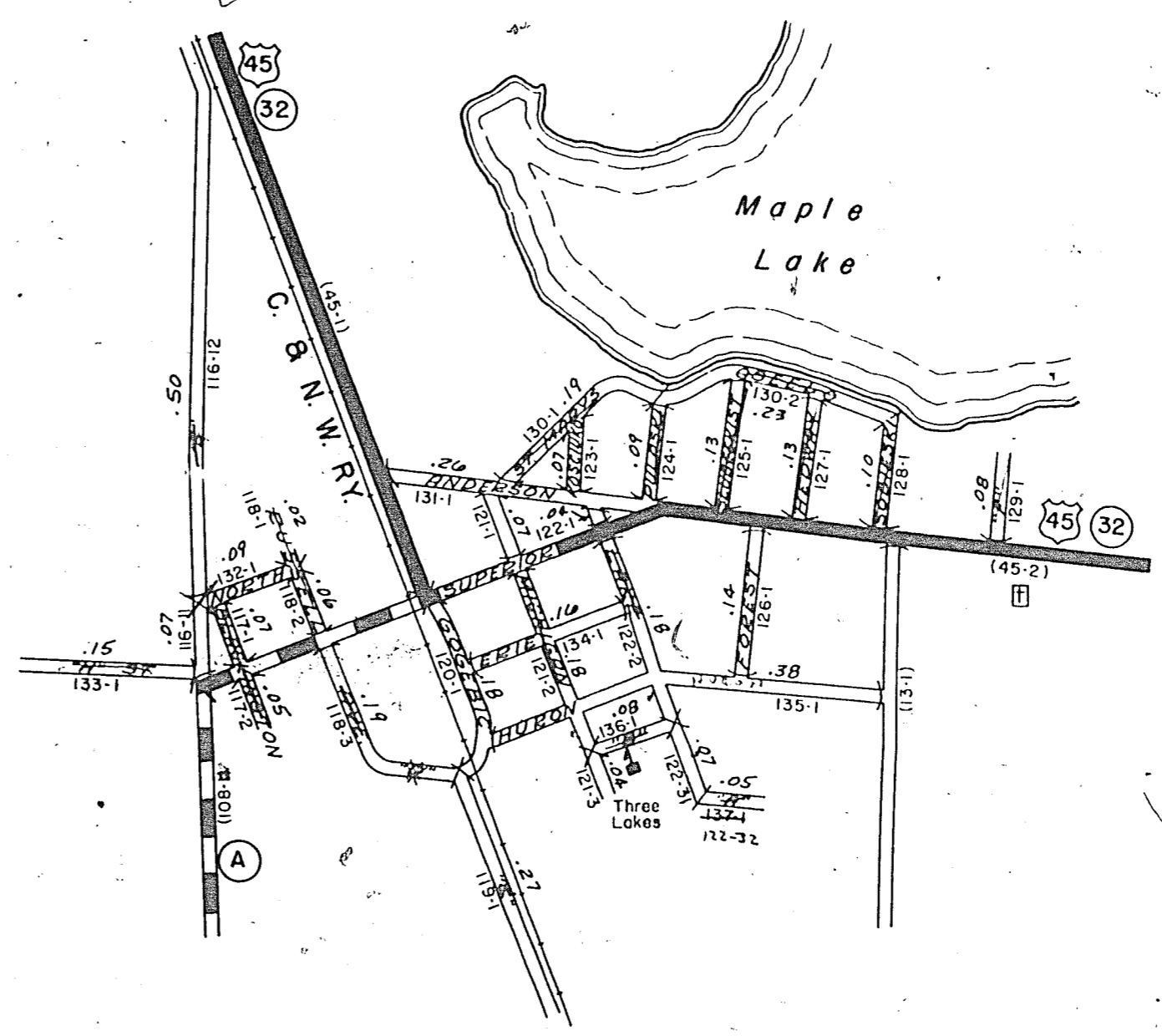
THREE LAKES - UNINCORPORATED (43-018B)

Date of Last Corr	State Trunks	County Trunks	Local Roads	Symbols
1-1-64			4.32	Sch. 1
1-1-65			4.32	Cem. 1
1-1-66			4.32	
1-1-61	0	0	4.40	
1-1-62			4.40	
1-1-63			4.32	

Certified as Correct By Town Chairman: *W. J. ...*



THREE LAKES  
ONEIDA CO.



THREE LAKES