

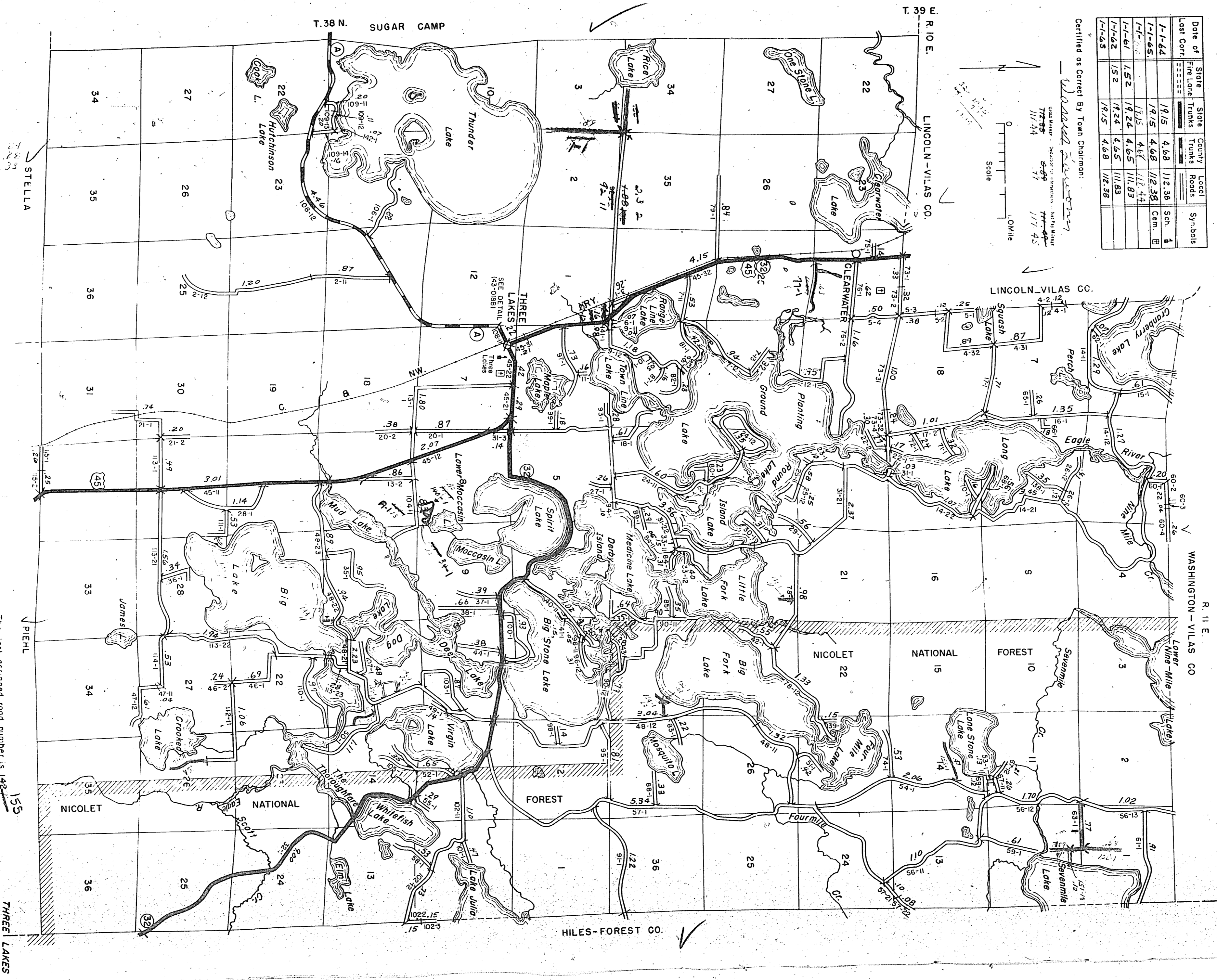
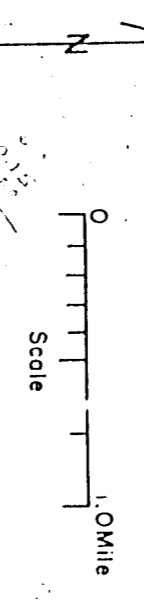
RETURN THIS PLAT

STATE HIGHWAY COMM. OF WISCONSIN
TOWN PLAT RECORD
TOWN - THREE LAKES
COUNTY - ONEIDA (43-018A)

Date of Last Corr.	State Road	County Trunk	Local Roads	Symbol
1-1-64	1915	4.68	112.38	Sen. A
1-1-65	1915	4.68	112.38	Sen. B
1-1-66	1915	4.68	112.38	Sen. C
1-1-67	1915	4.68	112.38	Sen. D
1-1-68	1915	4.68	112.38	Sen. E
1-1-69	1915	4.68	112.38	Sen. F
1-1-70	1915	4.68	112.38	Sen. G
1-1-71	1915	4.68	112.38	Sen. H
1-1-72	1915	4.68	112.38	Sen. I
1-1-73	1915	4.68	112.38	Sen. J
1-1-74	1915	4.68	112.38	Sen. K
1-1-75	1915	4.68	112.38	Sen. L
1-1-76	1915	4.68	112.38	Sen. M
1-1-77	1915	4.68	112.38	Sen. N
1-1-78	1915	4.68	112.38	Sen. O
1-1-79	1915	4.68	112.38	Sen. P
1-1-80	1915	4.68	112.38	Sen. Q
1-1-81	1915	4.68	112.38	Sen. R
1-1-82	1915	4.68	112.38	Sen. S
1-1-83	1915	4.68	112.38	Sen. T
1-1-84	1915	4.68	112.38	Sen. U
1-1-85	1915	4.68	112.38	Sen. V
1-1-86	1915	4.68	112.38	Sen. W
1-1-87	1915	4.68	112.38	Sen. X
1-1-88	1915	4.68	112.38	Sen. Y
1-1-89	1915	4.68	112.38	Sen. Z
1-1-90	1915	4.68	112.38	Sen. AA
1-1-91	1915	4.68	112.38	Sen. AB
1-1-92	1915	4.68	112.38	Sen. AC
1-1-93	1915	4.68	112.38	Sen. AD
1-1-94	1915	4.68	112.38	Sen. AE
1-1-95	1915	4.68	112.38	Sen. AF
1-1-96	1915	4.68	112.38	Sen. AG
1-1-97	1915	4.68	112.38	Sen. AH
1-1-98	1915	4.68	112.38	Sen. AI
1-1-99	1915	4.68	112.38	Sen. AJ
1-1-00	1915	4.68	112.38	Sen. AK

Certified as Correct By Town Chairman:

Walter Steinhilber
 Date Made: 7/25/55
 Date Recd: 11/4/55
 Date Made: 7/25/55
 Date Recd: 11/4/55



The 1st assigned road number is 1422

155