

STATE HIGHWAY COMM. OF WISCONSIN
TOWN PLAT RECORD

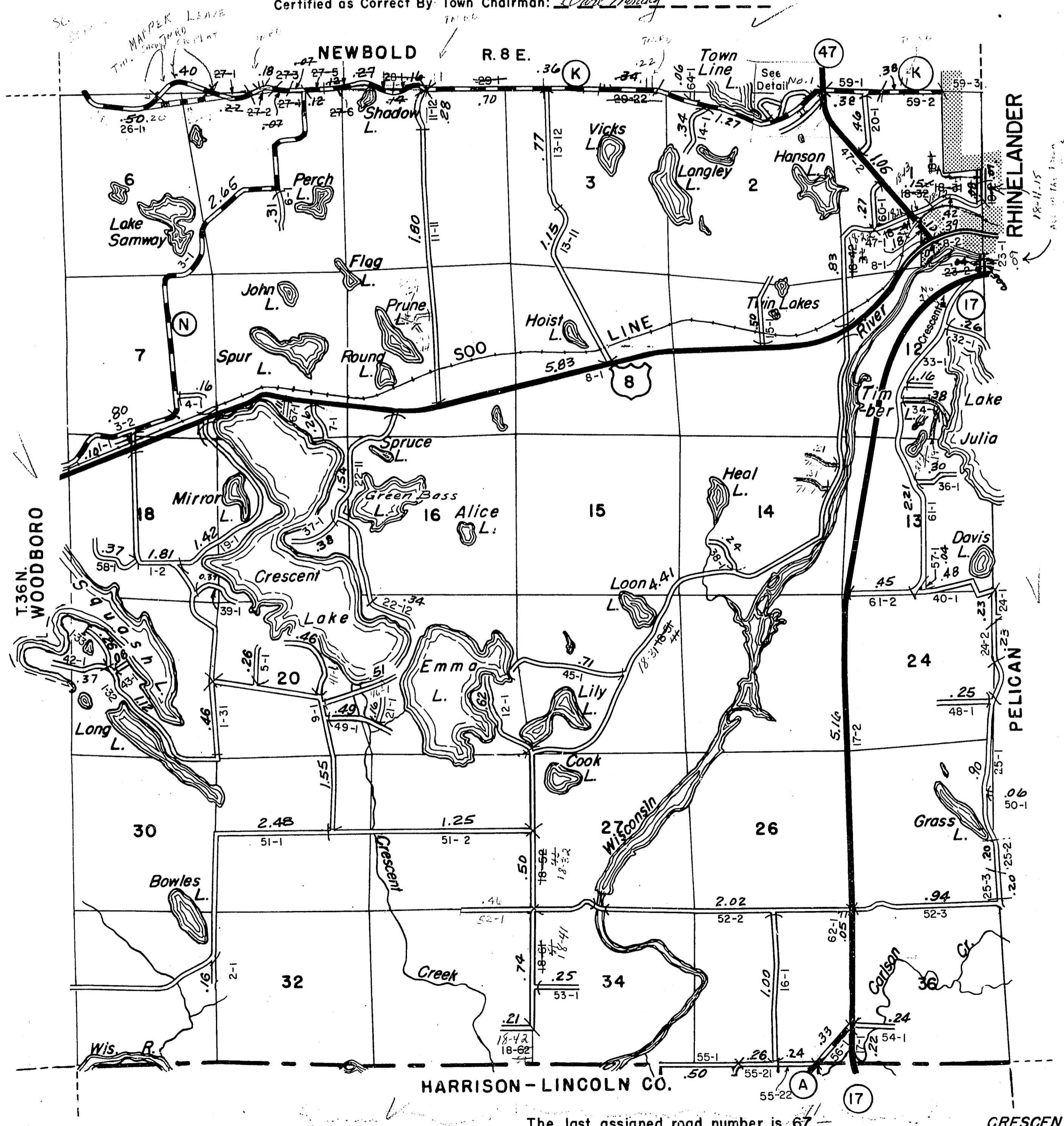
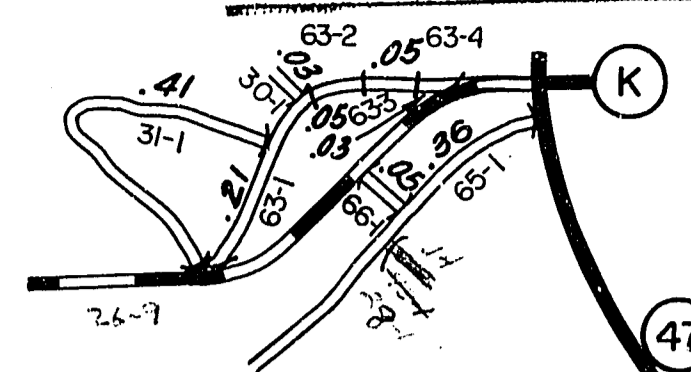
Town - CRESCENT County - ONEIDA (43-002)

| Date of Last Corr. | State Trunks | County Trunks | Local Roads | Symbols |
|--------------------|--------------|---------------|-------------|---------|
| 1-1-64 | 12.27 | 7.18 | 43.29 | Sch. 1 |
| 1-1-65 | 12.27 | 7.18 | 43.66 | Cem. 1 |
| 1-1-66 | 12.27 | 7.18 | 44.04 | |
| 1-1-67 | 12.27 | 7.18 | 45.55 | |
| 1-1-62 | 13.11 | 7.29 | 42.93 | |
| 1-1-63 | 12.27 | 7.42 | 42.55 | |

Gross Mileage -- Deduction for Intersections -- Net Pay Mileage
44.04 -- 32 -- 43.72
15.55 -- 36 -- 15.19

Certified as Correct By Town Chairman: *Carl D. Party*

RETURN THIS PLAT



The last assigned road number is 67.

CRESCENT