

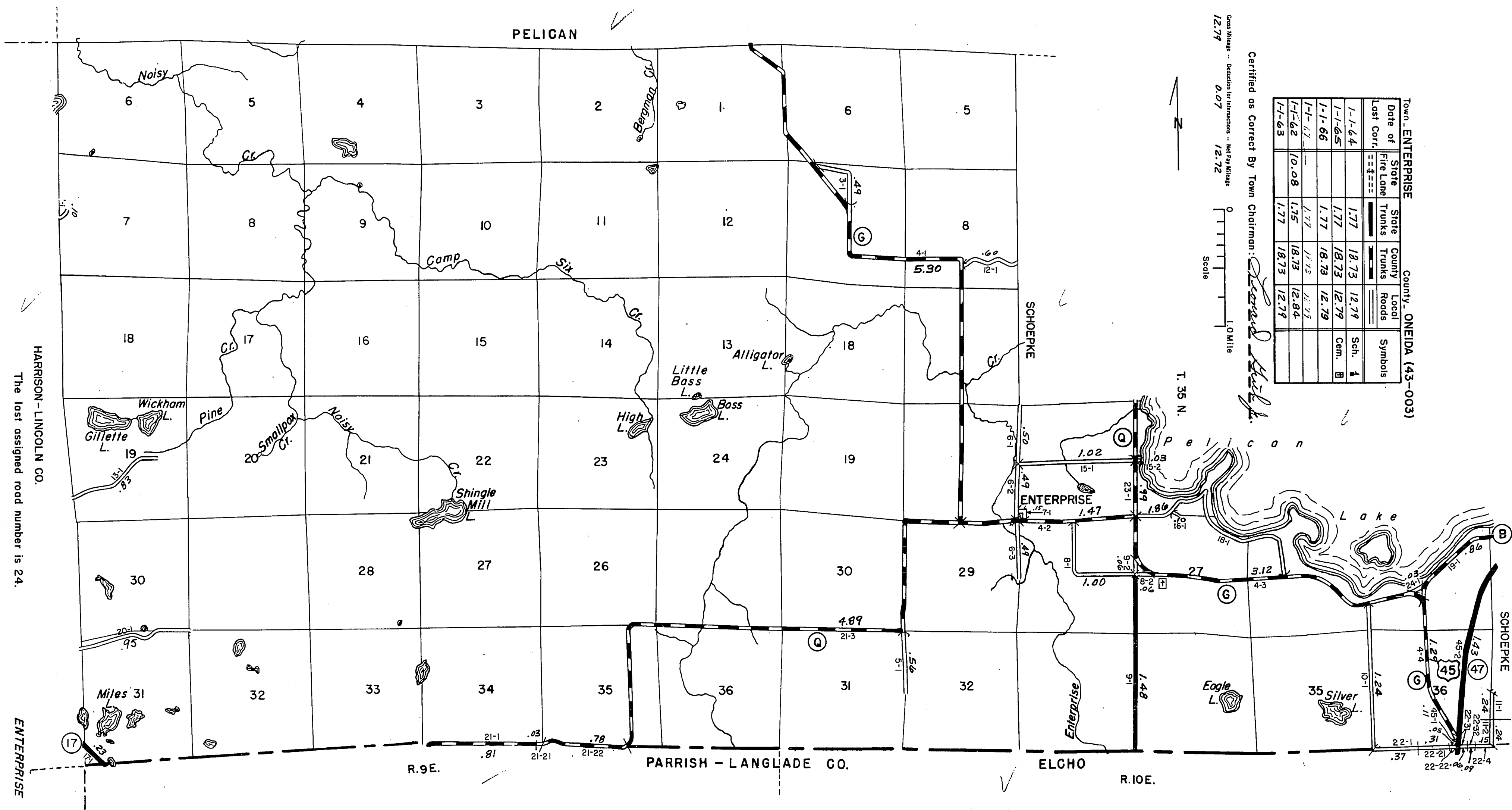
STATE HIGHWAY COMM. OF WISCONSIN
TOWN PLAT RECORD

RETURN THIS PLAT

TOWN - ENTERPRISE		COUNTY - ONEIDA (43-003)		
Date of Last Cert.	State Fire Lane Trunks	County Trunks	Local Roads	Symbols
1-1-44	==	---	---	Scn. A
1-1-65	---	---	---	Scn. B
1-1-66	---	---	---	
1-1-67	---	---	---	
1-1-68	---	---	---	
1-1-69	---	---	---	
1-1-70	---	---	---	
1-1-71	---	---	---	
1-1-72	---	---	---	
1-1-73	---	---	---	
1-1-74	---	---	---	
1-1-75	---	---	---	
1-1-76	---	---	---	
1-1-77	---	---	---	
1-1-78	---	---	---	
1-1-79	---	---	---	
1-1-80	---	---	---	
1-1-81	---	---	---	
1-1-82	---	---	---	
1-1-83	---	---	---	

Scale 0 1.0 MILE
12.79 0.07 12.72

Certified as Correct By Town Chairman: *[Signature]*



HARRISON - LINCOLN CO.
The last assigned road number is 24.

ENTERPRISE

R.9E.

PARRISH - LANGLADE CO.

ELCHO

R.10E.