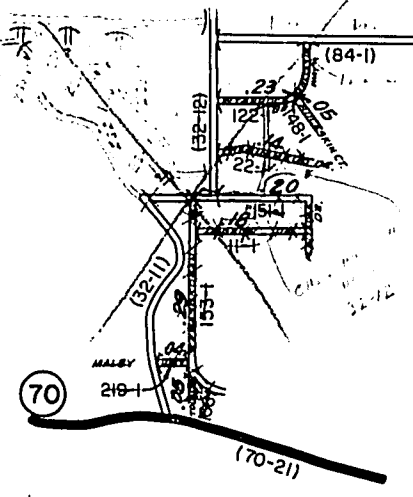
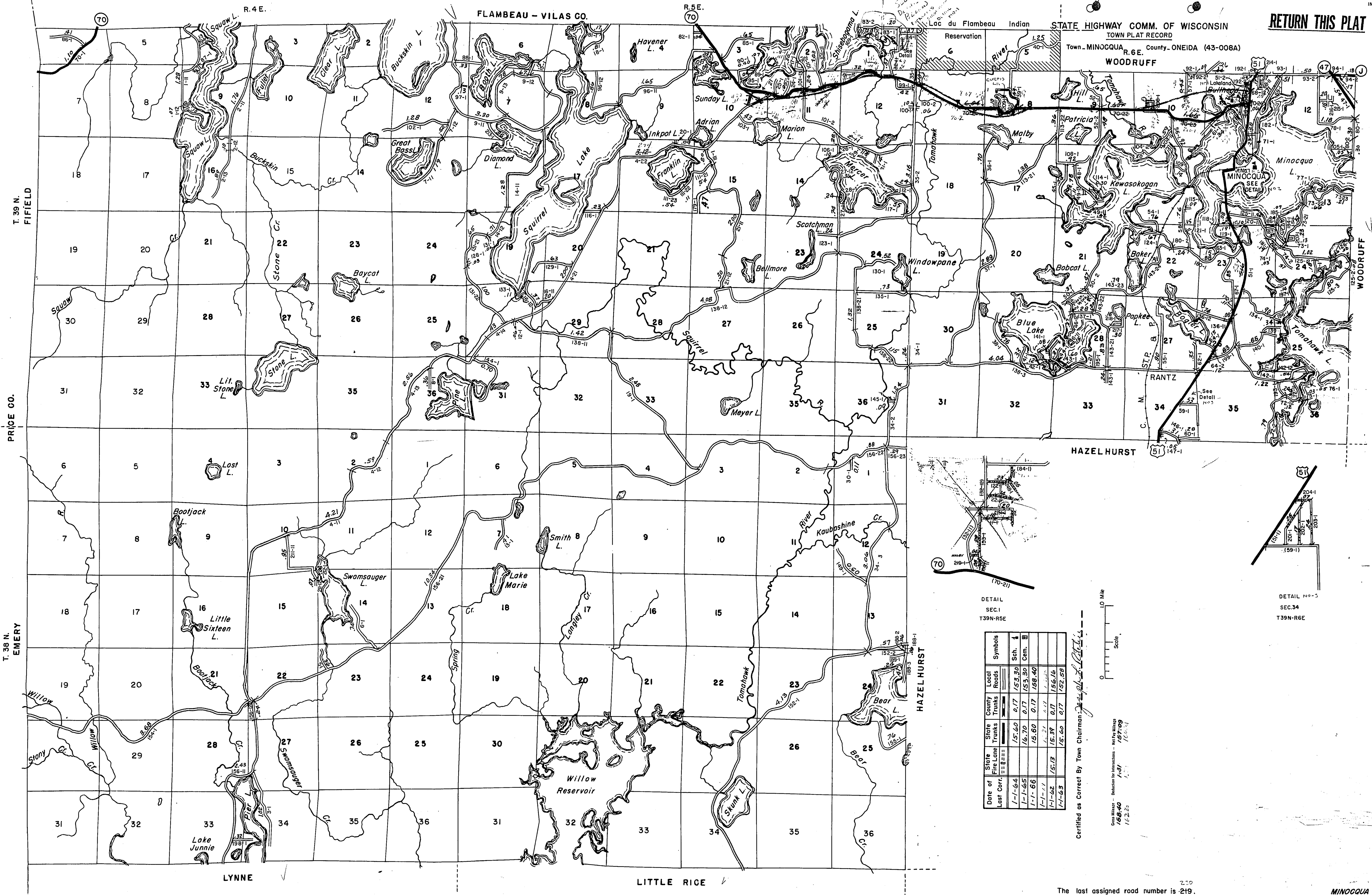
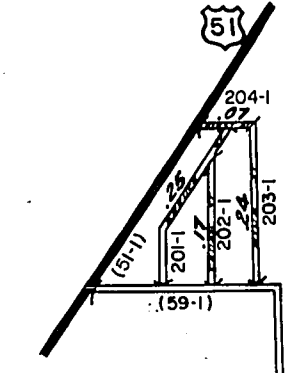


RETURN THIS PLAT

STATE HIGHWAY COMM. OF WISCONSIN
TOWN PLAT RECORD
Town - MINOCQUA R. 6E. County - ONEIDA (43-008A)



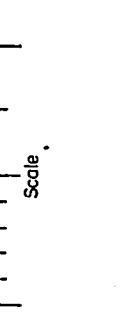
DETAIL
SEC 1
T39N-R5E



DETAIL No. 2
SEC 34
T39N-R6E

Date of Last Cor.	State Fire Lane	County Trunks	Local Roads	Symbols
1-1-64	15.60	0.17	153.30	Sch. 1
1-1-65	16.70	0.17	153.30	Com. 1
1-1-66	18.60	0.17	148.40	
1-1-67	18.30	0.17	156.16	
1-1-68	18.60	0.17	152.58	

Certified as Correct By Town Chairman *[Signature]*



1985-40
182.25
182.25

The last assigned road number is 219.

MINOCQUA