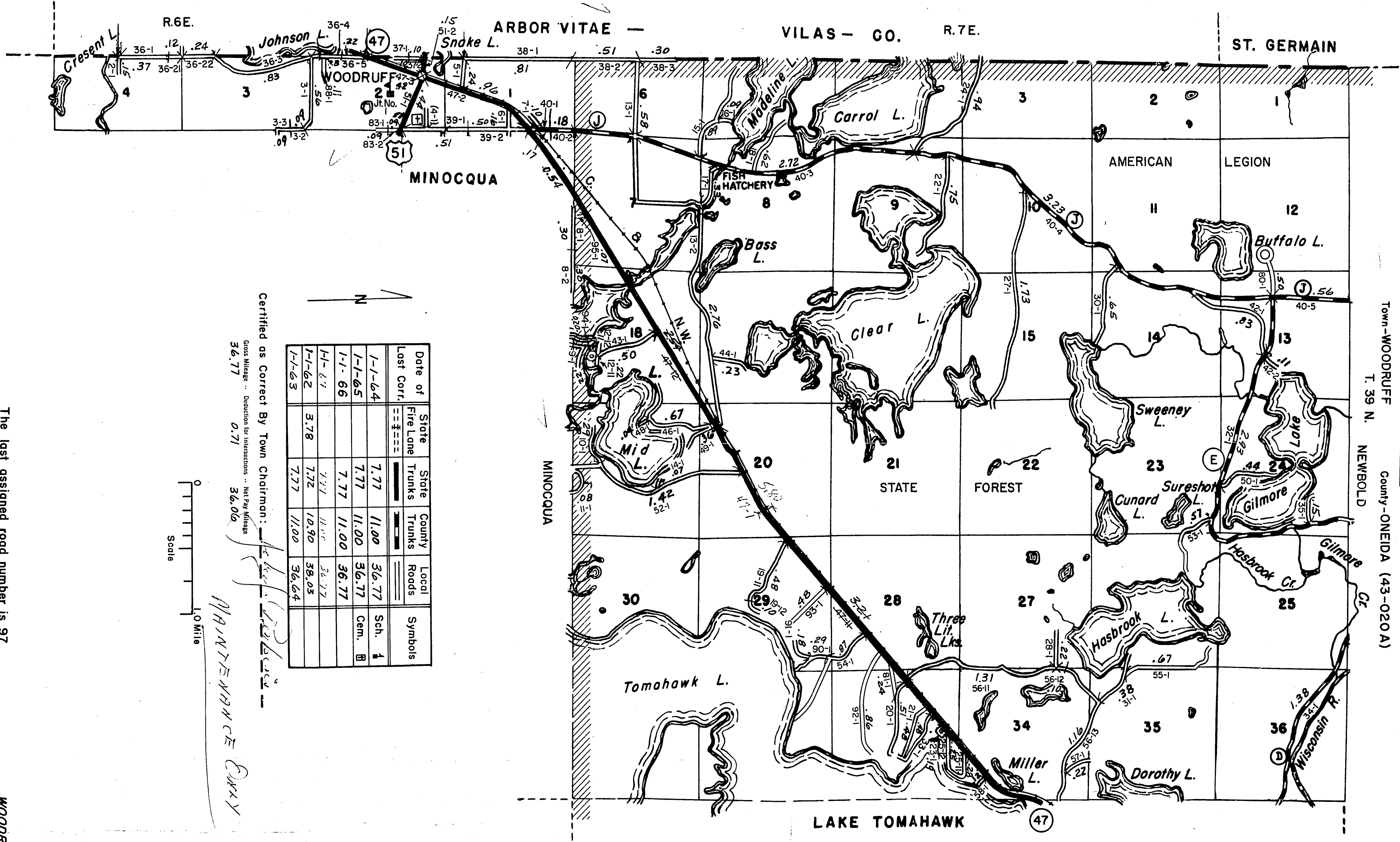


STATE HIGHWAY COMM. OF WISCONSIN
TOWN PLAT RECORD

RETURN THIS PLAT

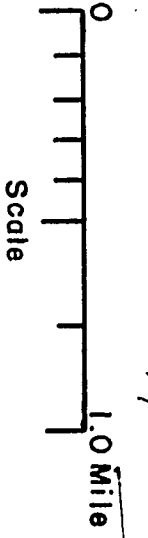
20-20
INSET 20A

Town-WOODRUFF County-ONEIDA (43-020A)
T. 39 N. NEWBOLD



Date of Last Corr.	State Fire Lane	State Trunks	County Trunks	Local Roads	Symbols
1-1-64	=====	=====	=====	=====	Sch. A
1-1-65	=====	=====	=====	=====	Cem. B
1-1-66	=====	=====	=====	=====	
1-1-62	=====	=====	=====	=====	
1-1-63	=====	=====	=====	=====	

Certified as Correct By Town Chairman: *[Signature]*
Gross Mileage - Deduction for Intersections - Net Pay Mileage
36.77 0.71 36.06
MAINTENANCE ONLY



The last assigned road number is 97.

WOODRUFF