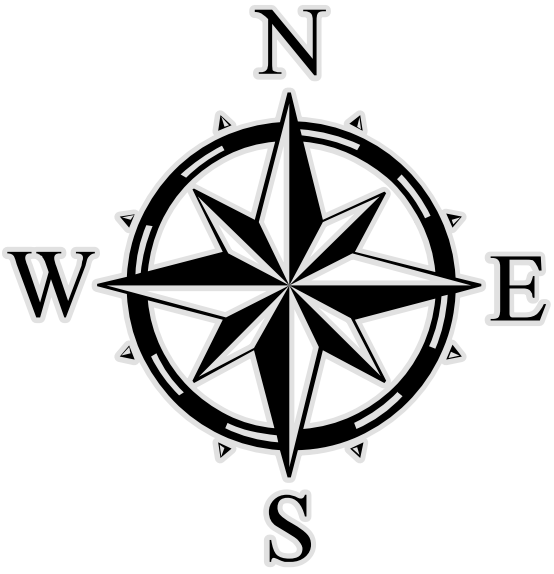


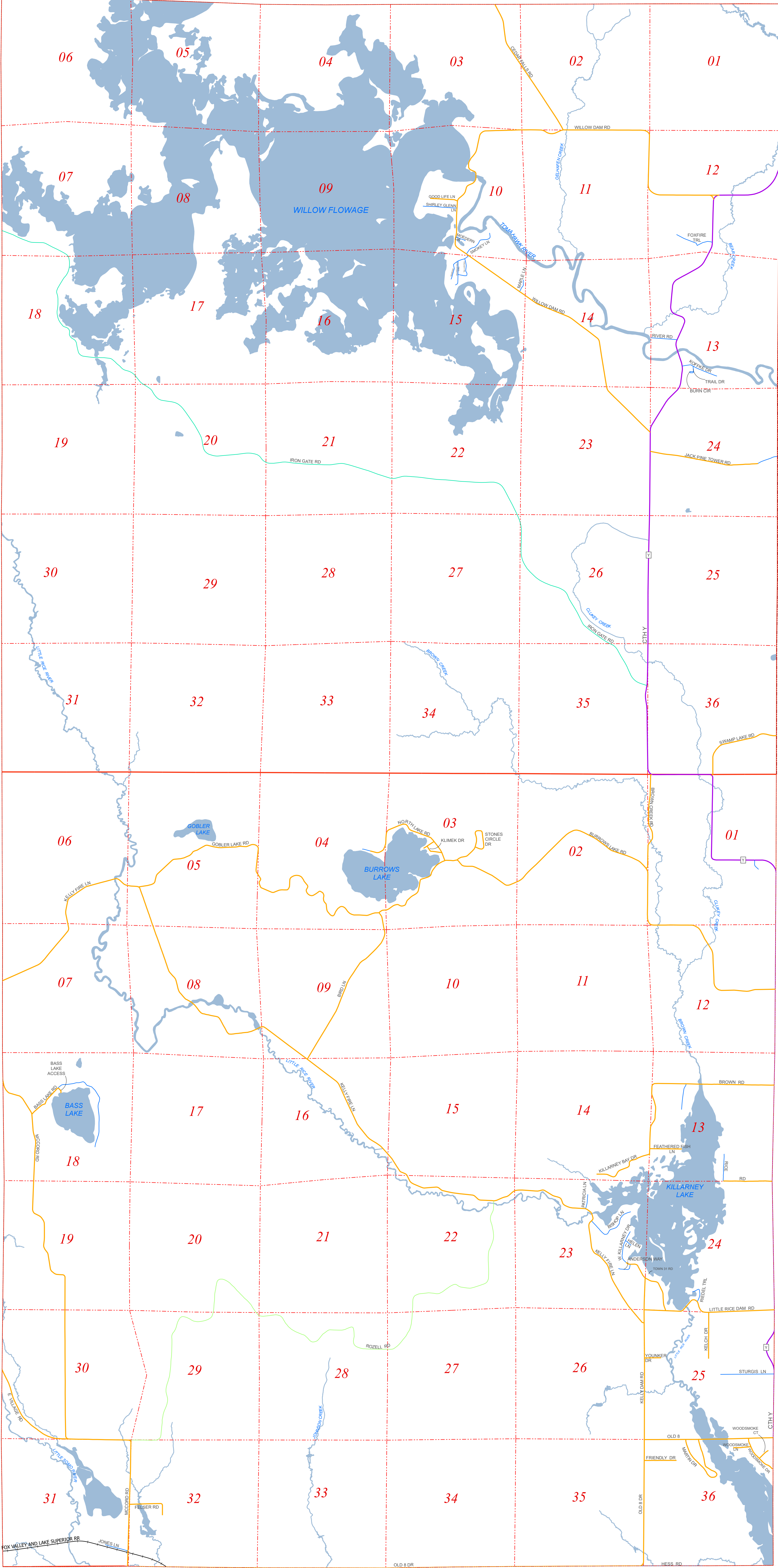
TOWN OF LITTLE RICE ROAD MAP



Scale
1" = 2000'
1:24,000

LEGEND

- Roads**
 - County
 - County Forest
 - Federal
 - Municipal
 - Private
 - State
 - State Forest
 - Town
- PLSS Boundary**
 - Section
 - Township
- Other**
 - Railroads
 - WaterBody



DATA SOURCES AND DISCLAIMERS:

Information depicted on this map was interpreted from aerial photography and various other public land records. An attempt was made to accurately represent the information shown hereon, however, recent changes in the physical and cultural landscape may not be represented. This map is intended for planning and general use only, please refer to original source documents for detailed information. Please contact the Oneida County Land Information Office at (715) 369-6179 if you discover any discrepancies on this map.