

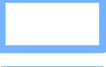

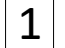
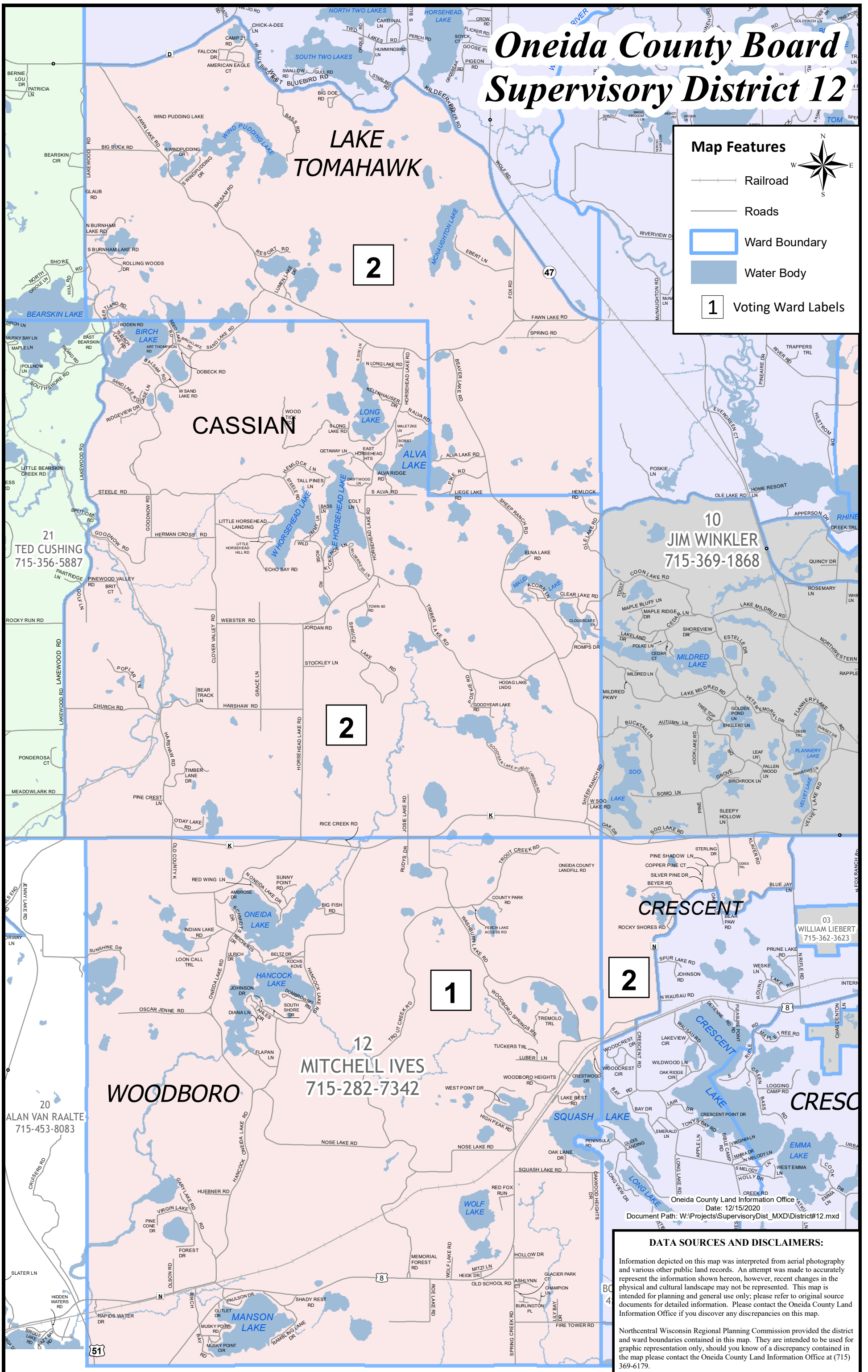
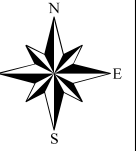


Oneida County Board Supervisory District 12

Map Features

-  Railroad
-  Roads
-  Ward Boundary
-  Water Body
-  Voting Ward Labels



Oneida County Land Information Office
Date: 12/15/2020
Document Path: W:\Projects\SupervisoryDist_MXD\District#12.mxd

DATA SOURCES AND DISCLAIMERS:

Information depicted on this map was interpreted from aerial photography and various other public land records. An attempt was made to accurately represent the information shown hereon, however, recent changes in the physical and cultural landscape may not be represented. This map is intended for planning and general use only; please refer to original source documents for detailed information. Please contact the Oneida County Land Information Office if you discover any discrepancies on this map.

Northcentral Wisconsin Regional Planning Commission provided the district and ward boundaries contained in this map. They are intended to be used for graphic representation only, should you know of a discrepancy contained in the map please contact the Oneida County Land Information Office at (715) 369-6179.