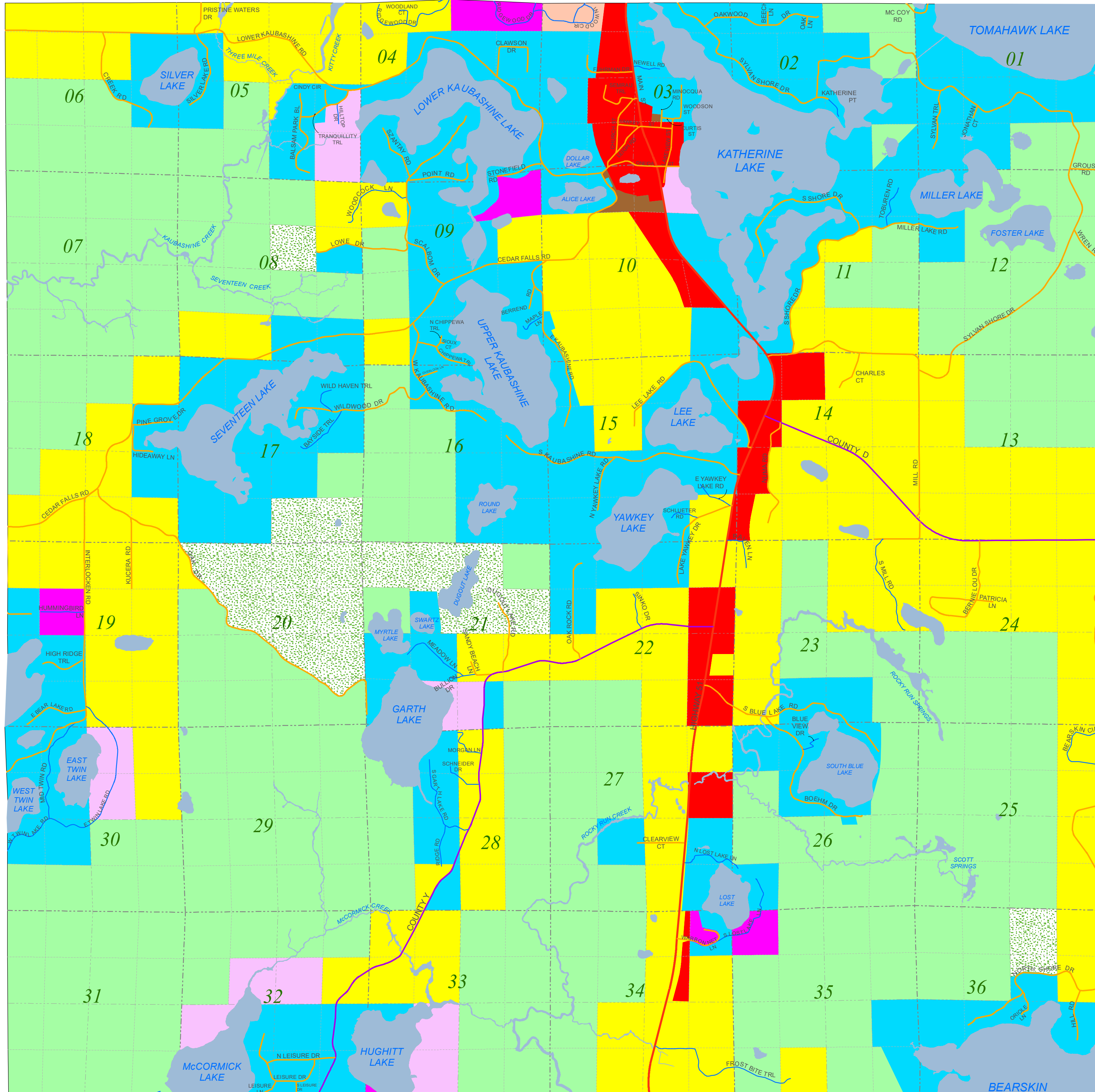
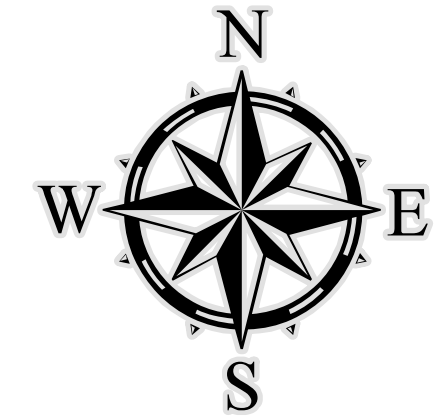
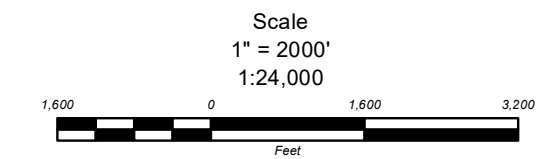


Town of Hazelhurst Zoning Map



Legend

WaterBody	County	Zoning District
PLSSBoundary	County Forest	Business B-1
<all other values>	Federal	Business B-2
LineType	Municipal	City of Rhinelander
Aliquot	Private	Forestry 1A
Quarter	State	Forestry 1B
Section	State Forest	Forestry 1C
Township	Town	General Use
Roads		Manufacturing and Industrial
		Multiple Family
		Residential and Farming
		Residential and Retail
		Rural Residential
		Single Family
		Unzoned

DATA SOURCES AND DISCLAIMERS:

Information depicted on this map was interpreted from aerial photography and various other public land records. An attempt was made to accurately represent the information shown hereon, however, recent changes in the physical and cultural landscape may not be represented. Zoning Districts represented on this map were provided by the Oneida County Planning and Zoning Department. Zoning Districts frequently change and/or may be too small at this map scale to accurately depict, therefore, this map should be used as only a general guide to zoning. Zoning districts that fall within the shoreland buffer are based on the approximate open waterbody boundary and all waterbodies may not be represented on the map. Ordinary High Water Mark (OHWM) determinations will require an onsite verification, please contact the Oneida County Planning and Zoning Department for more information at (715) 369-6130.

In the event of a conflict between the boundaries of the Zoning Districts represented on this map and the boundaries described in the Master Zoning District Document, the boundaries contained in the Master Zoning District Document shall govern and prevail.

This map is intended for planning and general use only; please refer to original source documents for detailed information.