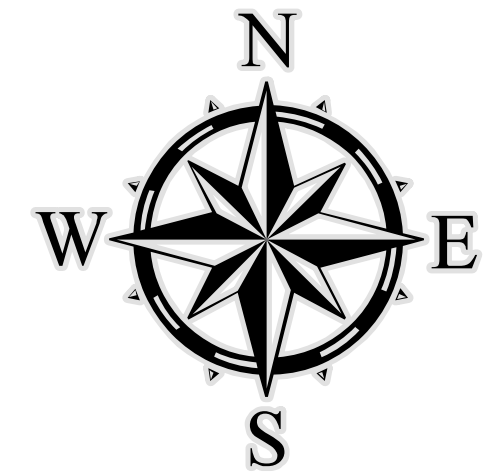
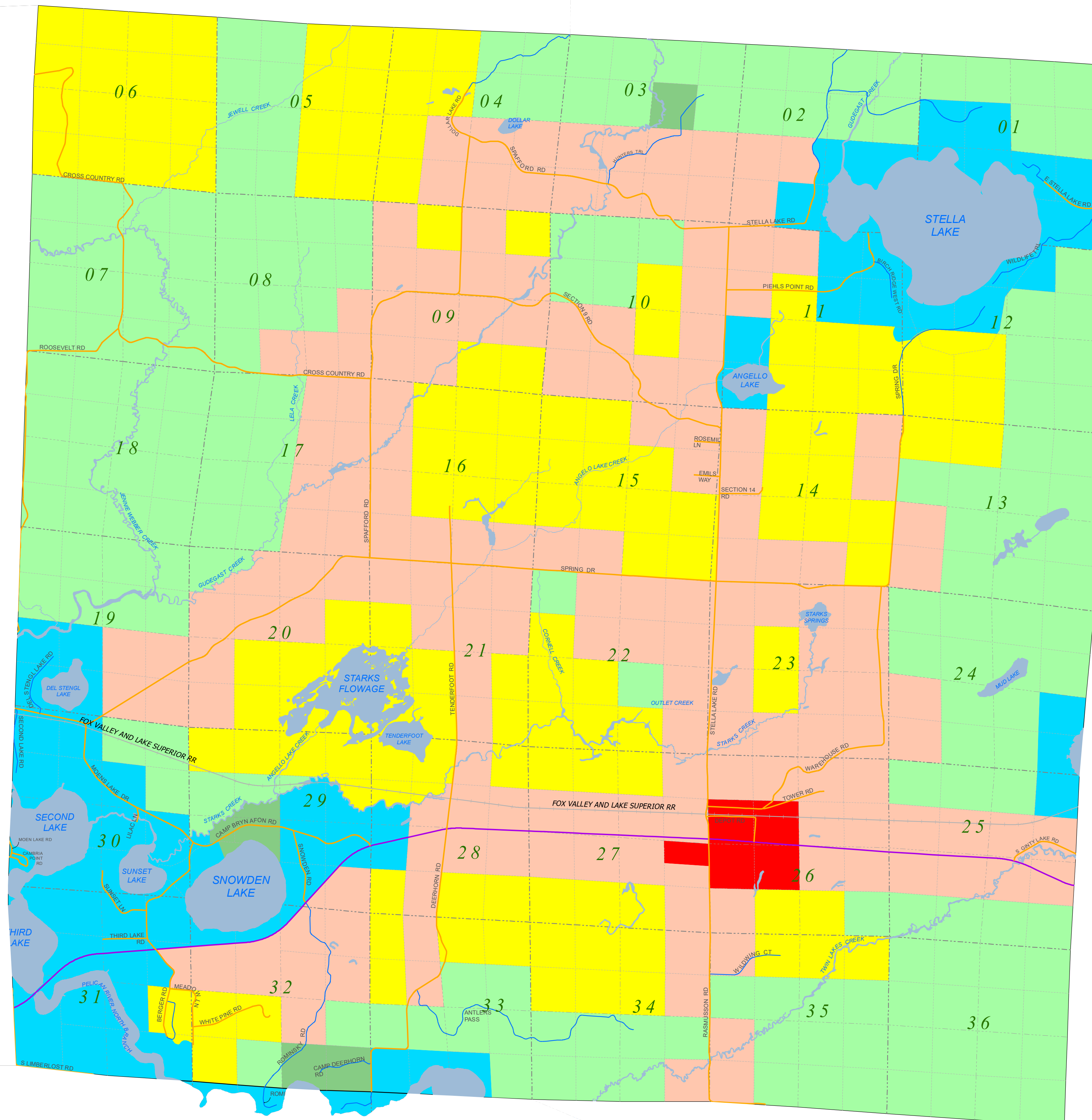
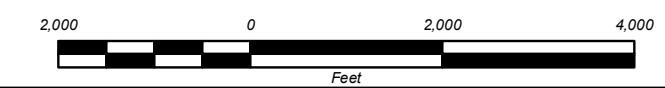


Town of Stella Zoning Map



Scale
1" = 2000'
1:24,000



Legend	
WaterBody	
RoadClass	
In Use	
PLSSBoundary <all other values>	
LineType	
Aliquot	
Quarter	
Section	
Township	
Roads	
RoadSubType	
County	
County Forest	
Federal	
Municipal	
Private	
State	
State Forest	
Town	
Zoning District	
Business B-1	
Business B-2	
City of Rhinelander	
Forestry 1A	
Forestry 1B	
Forestry 1C	
General Use	
Manufacturing and Industrial	
Multiple Family	
Recreational	
Residential and Farming	
Residential and Retail	
Rural Residential	
Single Family	
Unzoned	

DATA SOURCES AND DISCLAIMERS:

Information depicted on this map was interpreted from aerial photography and various other public land records. An attempt was made to accurately represent the information shown hereon, however, recent changes in the physical and cultural landscape may not be represented. Zoning Districts represented on this map were provided by the Oneida County Planning and Zoning Department. Zoning Districts frequently change and/or may be too small at this map scale to accurately depict, therefore, this map should be used as only a general guide to zoning. Zoning districts that fall within the shoreland buffer are based on the approximate open waterbody boundary and all waterbodies may not be represented on the map. Ordinary High Water Mark (OHWM) determinations will require an onsite verification, please contact the Oneida County Planning and Zoning Department for more information at (715) 369-6130.

In the event of a conflict between the boundaries of the Zoning Districts represented on this map and the boundaries described in the Master Zoning District Document, the boundaries contained in the Master Zoning District Document shall govern and prevail.

This map is intended for planning and general use only; please refer to original source documents for detailed information.