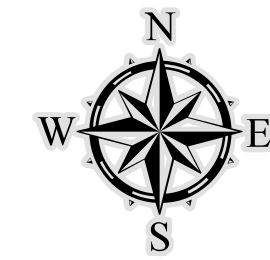
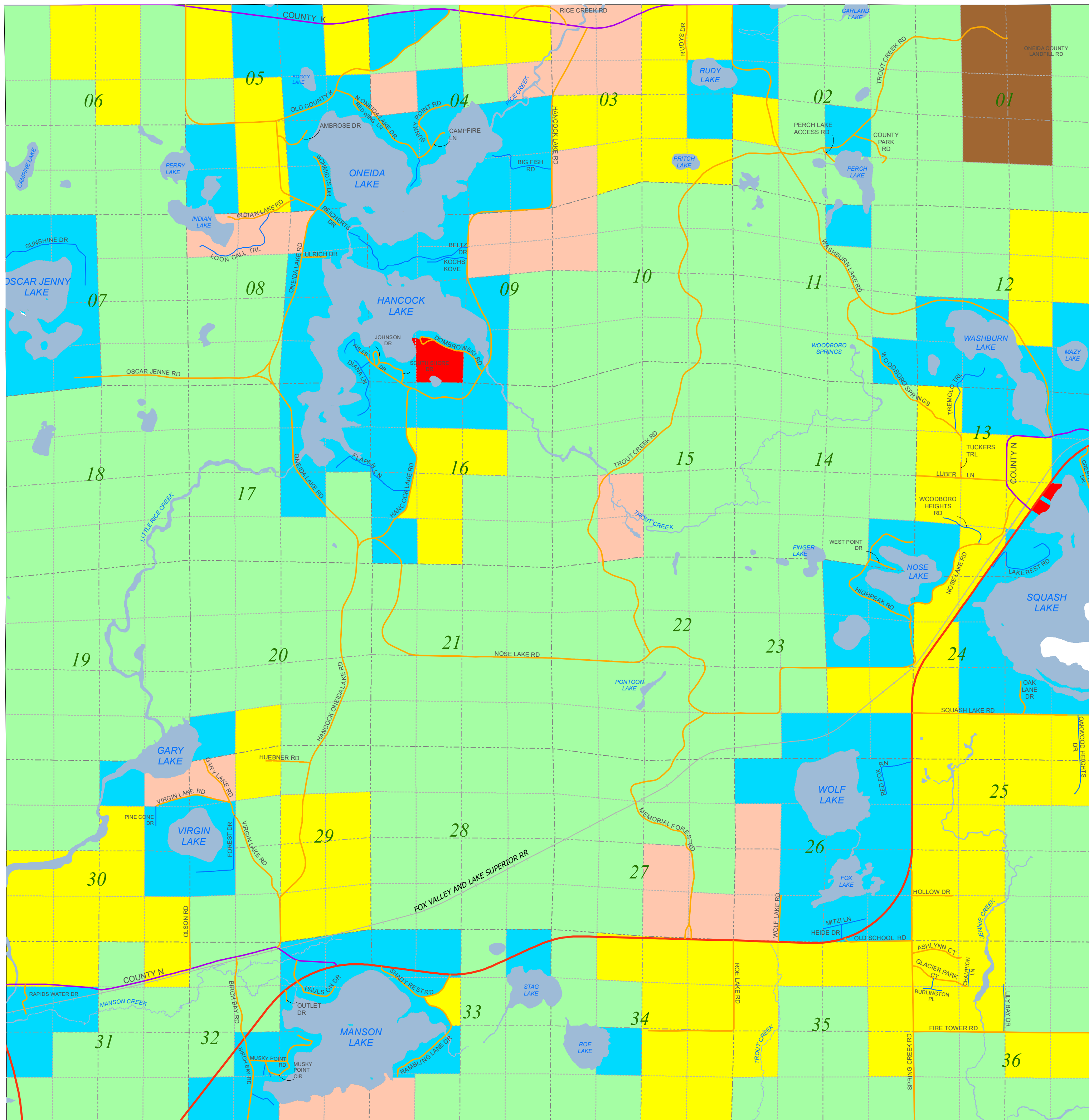
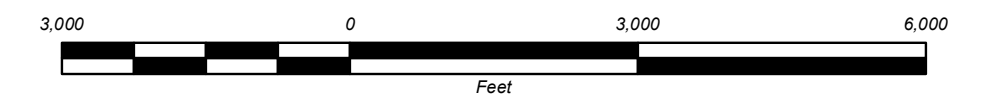


Town of Woodboro Zoning Map



Scale
1" = 2000'
1:24,000



Legend

| | | |
|---------------------|---------------|------------------------------|
| WaterBody | County | Zoning District |
| RoadClass | County Forest | Business B-1 |
| In Use | Federal | Business B-2 |
| PLSSBoundary | Municipal | City of Rhinelander |
| <all other values> | Private | Forestry 1A |
| LineType | State | Forestry 1B |
| Aliquot | State Forest | Forestry 1C |
| Quarter | Town | General Use |
| Section | | Manufacturing and Industrial |
| Township | | Multiple Family |
| Roads | | Residential and Farming |
| | | Residential and Retail |
| | | Rural Residential |
| | | See Zoning Document |
| | | Single Family |
| | | Unzoned |

DATA SOURCES AND DISCLAIMERS:

Information depicted on this map was interpreted from aerial photography and various other public land records. An attempt was made to accurately represent the information shown hereon, however, recent changes in the physical and cultural landscape may not be represented. Zoning Districts represented on this map were provided by the Oneida County Planning and Zoning Department. Zoning Districts frequently change and/or may be too small at this map scale to accurately depict, therefore, this map should be used as only a general guide to zoning. Zoning districts that fall within the shoreland buffer are based on the approximate open waterbody boundary and all waterbodies may not be represented on the map. Ordinary High Water Mark (OHWM) determinations will require an onsite verification, please contact the Oneida County Planning and Zoning Department for more information at (715) 369-6130.

In the event of a conflict between the boundaries of the Zoning Districts represented on this map and the boundaries described in the Master Zoning District Document, the boundaries contained in the Master Zoning District Document shall govern and prevail.

This map is intended for planning and general use only; please refer to original source documents for detailed information.